

NAGOYA UNIVERSITY

A Short Introduction



GENERAL INFORMATION



Nagoya University is a comprehensive research university located in the Tokai region of Japan, a region known for its manufacturing and industry.



Originating from the Temporary Medical School and Public Hospital in 1871, Nagoya University was founded as an Imperial University in 1939, and then became a National University in 1949.

Over the years, Nagoya University has fostered a free and open academic culture. This liberal environment played a crucial part in the success of the six faculty members honored with Nobel Prizes. Today, Nagoya University seeks to establish itself as one of the world's leading research universities. We are dedicated to improving our education and research capabilities, as described in our mission statement below.

Mission

Nagoya University aspires to contribute to the wellbeing of society through the pursuit and production of novel and valuable research and education by upholding a free and open academic philosophy. Our mission is:

- To pursue truth and produce world-leading intellectual achievements through creative research.
- To cultivate courageous intellectuals who are endowed with the powers of critical thinking and imagination by implementing education that values initiative and self-motivation.
- To contribute to human welfare, cultural development, and global industry by spearheading academic research and cultivating individuals capable of exercising leadership in national and international arenas.
- To contribute to regional development by drawing on the unique qualities of the local community and engaging in multi-faceted and broad-ranging research activities.
- To promote international academic cooperation and the education of international students and to contribute to educational and cultural exchanges with other countries, especially those in Asia.
- As part of the Tokai National Higher Education and Research System, to continue to explore a new type of national university: one that is a "commons of knowledge and innovation".

Nagoya University in Figures 2023

16,000 Students

3,200 Faculty members

6,400 Graduate students
9,600 Undergraduate students

9 Undergraduate Schools

13 Graduate Schools

2,400 International students

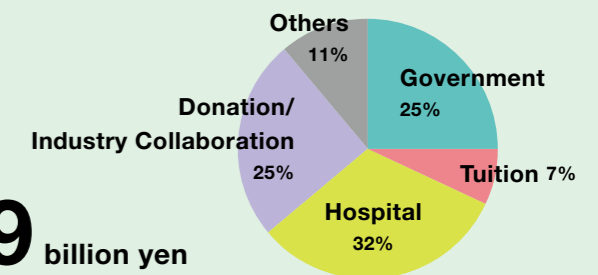
35 Research Institutes & Centers

6 Nobel laureates

8th in Times Higher Education (THE) Ranking of Japanese universities (2023)

Sources of Annual Revenue

129 billion yen



Educational & Research Organizations

Undergraduate Schools

- School of Humanities
- School of Education
- School of Law
- School of Economics
- School of Informatics
- School of Science
- School of Medicine
- School of Engineering
- School of Agricultural Sciences

Graduate Schools

- Graduate School of Humanities
- Graduate School of Education and Human Development
- Graduate School of Law
- Graduate School of Economics
- Graduate School of Informatics
- Graduate School of Science
- Graduate School of Medicine
- Graduate School of Engineering
- Graduate School of Bioagricultural Sciences
- Graduate School of International Development
- Graduate School of Mathematics
- Graduate School of Environmental Studies
- Graduate School of Pharmaceutical Sciences

Flagship Research Organizations

- Center for Asian Legal Exchange (CALE)
- Institute for Advanced Research (IAR)
- Institute for Space-Earth Environmental Research (ISEE)
- Institute of Materials and Systems for Sustainability (IMaSS)
- Institute of Transformative Bio-Molecules (ITbM)
- Institutes of Innovation for Future Society
- Integrated Research Consortium on Chemical Sciences (IRCCS)
- International Center for Research and Education in Agriculture (ICREA)
- Kobayashi-Maskawa Institute for the Origin of Particles and the Universe (KMI)
- Research Institute of Environmental Medicine (RIEM)

As part of the Tokai National Higher Education and Research System

- Institute for Glyco-core Research (IGCORE)

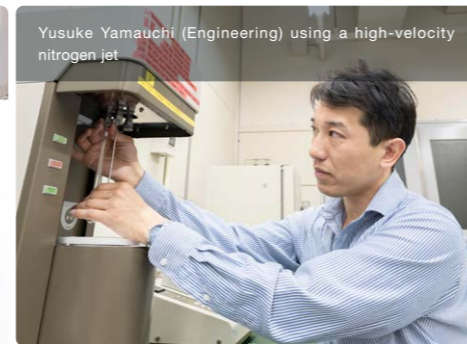
RESEARCH

Researchers at Nagoya University endeavor to innovate and generate discoveries that will advance knowledge and benefit society. As a comprehensive university, we undertake research across a diverse range of subjects in Engineering, the Natural Sciences, the Humanities, and the Social Sciences. Our six priority research areas are:

- Biochemistry, Genetics & Molecular Biology
- Physics & Space Science
- Neuroscience & Immunology
- Chemistry
- Earth Science
- Botany & Zoology



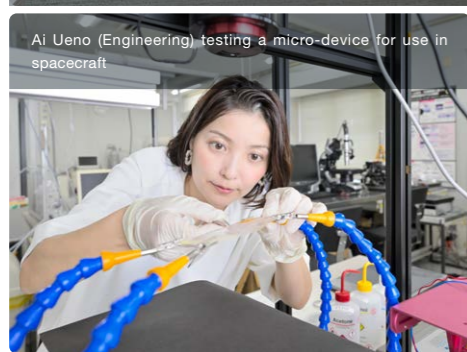
Students and faculty using the open discussion and research space at the Kobayashi-Maskawa Institute



Yusuke Yamauchi (Engineering) using a high-velocity nitrogen jet



Yasuko Nakamura (Humanities) holding the book she edited on intellect and emotion in the humanities



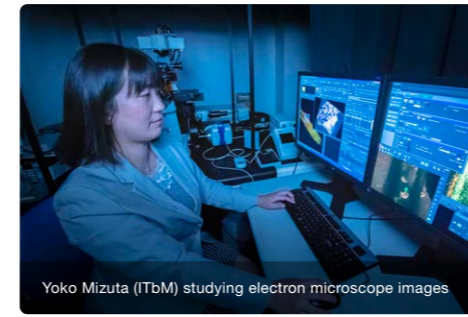
Ai Ueno (Engineering) testing a micro-device for use in spacecraft



The "Mix Lab" at ITbM, where researchers from different disciplines work alongside one another to find cutting-edge solutions to contemporary issues



Ryuichiro Higashinaka (Informatics) and his students chat with android Shoko-san (on screen) and robots CommU and SOTA



Yoko Mizuta (ITbM) studying electron microscope images



Yasuhiro Miyaki (Law) in Nagoya University's model courtroom



Researchers (Bioagricultural Sciences) collecting rice samples at the Nagoya University Farm



Researchers receive training on working in a cleanroom



Archaeologist Michiko Niimi (Informatics) at the Nagoya University Museum



Mika Nomoto (Center for Gene Research) in the laboratory

Our Nobel Laureates

Six researchers from Nagoya University have been honored with Nobel Prizes, with four in Physics and two in Chemistry.

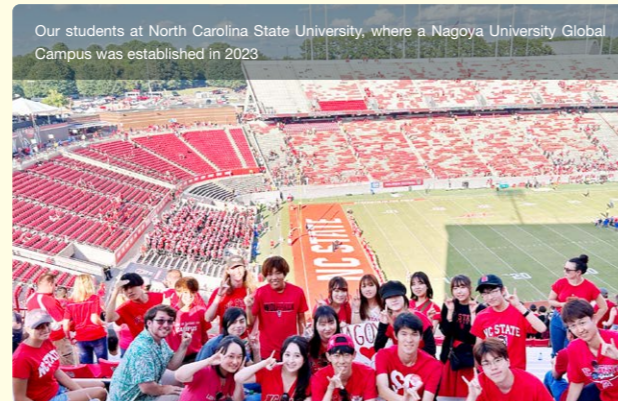
- **Isamu Akasaki** and **Hiroshi Amano** (2014, Physics) invented the blue LED, which enabled the creation of bright and energy-efficient white lighting.
- **Makoto Kobayashi** and **Toshihide Maskawa** (2008, Physics) discovered the origin of Broken Symmetry, which predicts the existence of at least three families of quarks.
- **Osamu Shimomura** (2008, Chemistry) discovered and developed the green fluorescent protein known as GFP.
- **Ryoji Noyori** (2001, Chemistry) developed methods for using chiral catalysts during hydrogenation reactions.

INTERNATIONAL ACTIVITIES & PROGRAMS

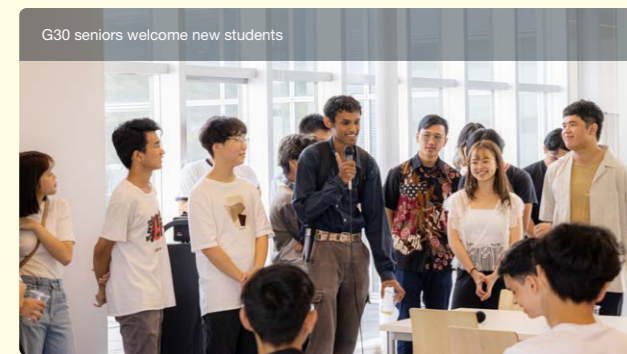
Nagoya University engages in educational and research exchanges with universities and research institutes around the world. We now admit a greater number of international students and facilitate more student exchanges than ever before.

Global Multi-Campus

Nagoya University has a long history of international collaboration. We have 480 partner institutions in 61 countries or regions and 24 overseas offices. The Asian Satellite Campuses Institute (ASCI) and the Center for Asian Legal Exchange (CALE) represent our historical commitment to education and research in Asia. To strengthen our global presence, we established the Global Multi-Campus (GMC) in 2022. The GMC promotes cooperation with strategic partner universities from the Asia-Pacific region, North America, and Europe.



The Global 30 International Programs



The Global 30 (G30) International Programs are full-degree undergraduate and graduate programs taught in English. G30 students come from various international education backgrounds. No Japanese language proficiency is required at the time of enrollment.

Joint Degree Programs

A joint degree program (JDP) is a single degree program established in international collaboration between two or more universities. Partner universities jointly confer a single degree. Nagoya University offers JDP in partnership with several universities from around the world.

- Science: University of Edinburgh (Scotland)
- Medicine: University of Adelaide (Australia), Lund University (Sweden), and the University of Freiburg (Germany)
- Bioagricultural Sciences: Kasetsart University (Thailand) and the University of Western Australia (Australia)
- Engineering: Chulalongkorn University (Thailand)

Membership in International Consortia

Nagoya University promotes international exchange with universities and other institutions through its membership in the following consortia and collaborative networks:

- Association of Pacific Rim Universities (APRU)
- Japan Academic Network in Europe (JANET)

- Japanese University Network Bridging The Americas (JUNBA)
- MIRAI (collaboration between Japanese and Swedish universities)
- University-Based Institutes for Advanced Study (UBIAS)

Asian Satellite Campuses Institute

In 2014, Nagoya University established the Asian Satellite Campuses Institute (ASCI) as a core component of its international outreach initiatives. Since then, ASCI has opened satellite campuses in six countries - Cambodia, Vietnam, Mongolia, Uzbekistan, Laos, and the Philippines. Collaborating with six graduate schools at Nagoya University, ASCI coordinates the delivery of the Transnational Doctoral Programs for Leading Professionals in Asian Countries.



COLLABORATION WITH INDUSTRY



Nagoya University has a strong history of partnering with industry on research projects. These initiatives cover areas such as mobility, advanced materials, and energy. We have recently entered into partnerships with companies in the life sciences and quantum science. Our goal is to share knowledge with society by promoting open innovation and supporting start-ups. Through these collaborations, we endeavor to contribute to the creation of a more sustainable world.

The City of Nagoya and Aichi Prefecture

Nagoya has a population of around 2.3 million and is the capital of Aichi Prefecture. Aichi is home to an economic cluster of global companies in the automotive, aerospace, and robotics sectors. It is also home to the Port of Nagoya, Japan's largest port in terms of both cargo volume and land area.





Nagoya University
International Communications Office
Furo-cho, Chikusa-ku, Nagoya, 464-8601, Japan
Email address: icomm@t.mail.nagoya-u.ac.jp
Website: <https://en.nagoya-u.ac.jp>

