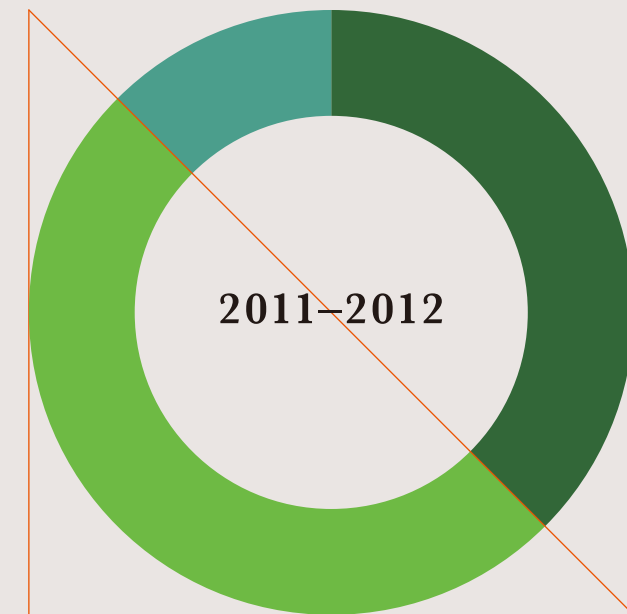


NAGOYA UNIVERSITY **FACTBOOK**





- 01 Organizational Structure
- 02 Schools (Undergraduate Courses)
- 03 Graduate Schools (Graduate Courses)
- 06 Staff
Student Enrollment
- 07 Degrees Conferred
Financial Outline
- 08 Highlights of Research Projects
- 09 Housing for International Researchers and Students
Library Holdings
- 10 Our Partner Institutions
- 14 International Exchange
- 16 Historical Chart
- 17 The City of Nagoya

Organizational Structure



Schools (Undergraduate Courses)

| Schools | Departments | Courses / Programs | |
|------------------------------------|---|---|--|
| School of Letters | Department of Humanities | <ul style="list-style-type: none"> Philosophy and Civilization Theory Courses History and Cultural History Courses Literature and Linguistics Courses Environmental and Behavioral Science Courses | |
| School of Education | Department of Human Developmental Sciences | <ul style="list-style-type: none"> Lifelong Education and Development Course School Education and Information Science Course International Education and Culture Course Human Psychology Course Counseling and Psychotherapy Course | |
| School of Law | Department of Law and Political Science | <ul style="list-style-type: none"> Fundamental Positive Law Fundamental Political Science Contemporary Legal Disciplines Dispute Settlement Law Business Economics Law Public Policy International Relations Legal and Administrative Informatics | |
| School of Economics | Department of Economics | <ul style="list-style-type: none"> Theoretical Economics Applied Economics | |
| | Department of Business Administration | <ul style="list-style-type: none"> Corporate Management Information Accounting | |
| School of Informatics and Sciences | Department of Natural Science Informatics | <ul style="list-style-type: none"> Complex Systems and Informatics Mathematical Sciences and Informatics Environmental Science of Earth and Materials | |
| | Department of Social and Human Science Informatics | <ul style="list-style-type: none"> Juristic and Economic Studies of Environments Sociological-Geographical Studies of Environment Psychology Society and Media Studies | |
| School of Science | Department of Mathematics | <ul style="list-style-type: none"> Mathematics | |
| | Department of Physics | <ul style="list-style-type: none"> Physics | |
| | Department of Chemistry | <ul style="list-style-type: none"> Chemistry | |
| | Department of Biological Science | <ul style="list-style-type: none"> Biological Science | |
| | Department of Earth and Planetary Sciences | <ul style="list-style-type: none"> Earth and Planetary Sciences | |
| School of Medicine | Department of Medicine | | <ul style="list-style-type: none"> Anatomy Physiology Biochemistry Pathology Microbiology Medical Zoology Immunology Legal Medicine Hygiene Public Health Preventive Medicine Internal Medicine, Neurology Surgery, Thoracic Surgery Orthopedic Surgery Obstetrics and Gynecology Ophthalmology Psychiatry Pediatrics Dermatology Urology Otorhinolaryngology Radiology Medicine Anesthesiology Oral and Maxillofacial Surgery Neurosurgery Geriatrics Emergency Medicine Clinical Laboratory Medicine |
| | Department of Health Sciences | Department of Nursing | <ul style="list-style-type: none"> Fundamentals of Nursing Clinical Nursing Human Development Nursing and Midwifery Public Health and Home Care Nursing |
| | | Department of Radiological Technology | <ul style="list-style-type: none"> Basic Radiological Technology Medical Radiological Technology |
| | | Department of Medical Technology | <ul style="list-style-type: none"> Basic Medical Technology Medical Laboratory Technology |
| | | Department of Physical Therapy | <ul style="list-style-type: none"> Basic Physical Therapy Applied Physical Therapy |
| | | Department of Occupational Therapy | <ul style="list-style-type: none"> Basic Occupational Therapy Applied Occupational Therapy |
| School of Engineering | Department of Chemical and Biological Engineering | <ul style="list-style-type: none"> Applied Chemistry Course Chemical Engineering Course Biotechnology Course | |
| | Department of Physical Science and Engineering | <ul style="list-style-type: none"> Materials Engineering Course Applied Physics Course Quantum Science and Energy Engineering Course | |
| | Department of Electrical and Electronic Engineering and Information Engineering | <ul style="list-style-type: none"> Electrical and Electronic Engineering Course Information Engineering Course | |
| | Department of Mechanical and Aerospace Engineering | <ul style="list-style-type: none"> Mechanical Engineering Course Electronic-Mechanical Engineering Course Aerospace Engineering Course | |
| | Department of Civil Engineering and Architecture | <ul style="list-style-type: none"> Civil Engineering Course Architecture Course | |
| School of Agricultural Sciences | Department of Bioenvironmental Sciences | <ul style="list-style-type: none"> Bioenvironmental Sciences | |
| | Department of Bioresource Sciences | <ul style="list-style-type: none"> Bioresource Sciences | |
| | Department of Applied Biosciences | <ul style="list-style-type: none"> Applied Biosciences | |

*English names for the above departments, programs and courses are tentative.

Global 30 International Programs Taught in English (Undergraduate)

| Programs | Affiliated Schools | Majors |
|---------------------------------|---|---|
| Automotive Engineering | Engineering | <ul style="list-style-type: none"> Mechanical and Aerospace Engineering Electrical and Electronic Engineering and Information Engineering |
| | | <ul style="list-style-type: none"> Biological Science |
| Biological Sciences | <ul style="list-style-type: none"> Science Agricultural Science | <ul style="list-style-type: none"> Applied Biosciences |
| Chemistry | Science | <ul style="list-style-type: none"> Chemistry |
| | Engineering | <ul style="list-style-type: none"> Chemical and Biological Engineering |
| Fundamental and Applied Physics | Science | <ul style="list-style-type: none"> Physics |
| | Engineering | <ul style="list-style-type: none"> Physical Science and Engineering |
| Social Sciences | Law | <ul style="list-style-type: none"> Law and Political Science |
| | Economics | <ul style="list-style-type: none"> Economics and Business Administration |

Graduate Schools (Graduate Courses)

| Graduate Schools | Departments | Courses | |
|--|--|--|--|
| Graduate School of Letters | Department of Humanities | <ul style="list-style-type: none"> Comparative Studies of Humanities Japanese Culture Philosophy Linguistics Eastern Studies Japanese History Oriental History World History Art History and Archaeology Japanese Literature and Linguistics Western Literature and Linguistics | |
| Graduate School of Education and Human Development | Department of Educational Sciences | <ul style="list-style-type: none"> Lifelong Education and Development School Education and Information Sciences Foundations of Education and Human Development Higher Education Sports Science for Lifelong Physical Activity | |
| | Department of Psychology and Human Developmental Sciences | <ul style="list-style-type: none"> Psychological Sciences Human Development and Clinical Psychology Sports Behavioral Sciences | |
| Graduate School of Law | Department of the Combined Graduate Program in Law and Political Science | <ul style="list-style-type: none"> Core Law and Political Science Contemporary Legal Systems International Comparative Law and Political Science Asian Law and Political Science | |
| | JD Program for Legal Practice (Nagoya University Law School) | <ul style="list-style-type: none"> Core Law Applied Contemporary Law | |
| Graduate School of Economics | Department of Socio-Economic System | <ul style="list-style-type: none"> Analysis on Markets and Institutions Socio-Economic Analysis Analysis on the System of Policy Making Socio-Environmental System | |
| | Department of Industrial Management System | <ul style="list-style-type: none"> Corporate System Management Innovation Creation of Information | |
| Graduate School of Science | Division of Particle and Astrophysical Sciences | | <ul style="list-style-type: none"> Fundamental Theoretical Physics Cosmology and Astrophysics Interstellar Physics Elementary Particle Physics Hadron Physics Atomic Physics Solar-Terrestrial Relationships Physical Processes in Solar-Terrestrial Environment Chemical Processes in Solar-Terrestrial Environment |
| | Division of Material Science | | <ul style="list-style-type: none"> Interdisciplinary Chemical Sciences Molecular Biophysics Inorganic and Analytical Chemistry Organic Chemistry and Biochemistry Physical Chemistry Biophysics Fundamental Condensed Matter Physics Solid State Physics Applied Condensed Matter Physics Materials Science |
| | Division of Biological Science | | <ul style="list-style-type: none"> Biomolecular Architecture Molecular Genetics Molecular Information and Cellular Regulation Developmental Biology Genetic Mechanism Supramolecular Biology Cell Regulation Biological Systems Environmental Biology Gene Analysis Genomics and Clock Bio-nanomachine Reproduction and Genetics |
| | | | |
| Graduate School of Medicine | Doctor of Medical Science | Program in Integrated Molecular Medicine | <ul style="list-style-type: none"> Biological Chemistry Microbiology and Immunology Internal Medicine High-Technology Application of Medicine Advanced Medical Science Laboratory Animal Science |
| | | Program in Cell Information Medicine | <ul style="list-style-type: none"> Cell Science Clinical Neurosciences Head and Neck and Sensory Organ Medicine Neuroscience Oncology Clinical Pharmacology Higher Nervous Control Regulation of Organ Function Molecular and Cellular Adaptation |
| | | Program in Function Construction Medicine | <ul style="list-style-type: none"> Anatomy and Cell Biology Pathology Surgery Musculoskeletal and Cutaneous Medicine Biomedical Regulation Development Clinical Management Medicine |
| | | Program in Health and Community Medicine | <ul style="list-style-type: none"> Social Life Science Medicine in Growth and Aging Maternal and Perinatal Care Psychiatry for Parents and Children Comprehensive Ambulatory Medicine Health Promotion Medicine |
| | Master of Medical Science | <ul style="list-style-type: none"> Program in Medical Science Program in Medical Sciences, Healthcare Administration Course | |

| Graduate Schools | Departments | Courses | |
|-----------------------------|--------------------------------|---|---|
| Graduate School of Medicine | Doctor's Course, Former Period | Program in Nursing | • Fundamentals of Nursing • Clinical Nursing • Human Development Nursing and Midwifery |
| | | Program in Radiological and Medical Laboratory Sciences | • Radiological Sciences • Pathophysiological Laboratory Sciences |
| | | Program in Physical and Occupational Therapy | • Physical Therapy • Occupational Therapy |
| | Doctor's Course, Latter Period | Program in Nursing | • Nursing for Health Risk • Nursing for Developmental Health |
| | | Program in Radiological and Medical Laboratory Sciences | • Radiological Sciences • Pathophysiological Laboratory Sciences |
| | | Program in Physical and Occupational Therapy | • Physical Therapy |

| Graduate Schools | Departments | Courses |
|--------------------------------|---|---|
| Graduate School of Engineering | Department of Applied Chemistry, Chemical Engineering and Biotechnology | • Physical Chemistry • Organic Chemistry • Inorganic and Analytical Chemistry • Materials Processing Engineering • Chemical Systems Engineering • Biotechnology • Biomaterials • Energy and Environmental Chemistry • Energy Process and Ecomaterials |
| | Department of Materials, Physics and Energy Engineering | • Materials Processing • Bioinspired Materials • Structural Materials and Processing • Ecological Materials • Information and Electronic Materials • Materials Characterization • Quantum Physics and Engineering • Structural Physics • Soft and Solid Matter Physics • Energy Related Materials Engineering • Quantum and Energy System Engineering • Energy Quantum Beam and Materials Engineering • Energy Safety Engineering • EcoTopia-oriented Materials Engineering • Ecological Electronic Device Engineering • Energy System Materials and Recycling Engineering |
| | Department of Electrical Engineering and Computer Science | • Power Engineering and Systems • Advanced Energy Science • Materials and Device Processing • Solid State Devices • Quantum Devices • Communication and Control Systems • Computer Engineering • Information Systems • Space Electromagnetic Environment • Environment-friendly Electric Power System • Electron Beam Applications and Electronic Nanodevices |
| | Department of Mechanical Science and Engineering | • Advanced Materials and Manufacturing • Thermo-Fluids and Environmental Engineering • Biomechanics and Human-Machine Systems • Micro-Nano Mechanical Systems • Mechatronics Design • Sensing and Control • Mechanical Engineering for Sustainable Society • Human Centered Design |
| | Department of Aerospace Engineering | • Aerodynamics and Propulsion • Structure and Control • Environmental Thermo-Fluid Systems |
| | Department of Civil Engineering | • Structural Engineering and Materials • River and Maritime Engineering • Soil Mechanics and Geotechnical Engineering • Infrastructure Systems Planning and Management • Environment Cohabitation and Ecological System |
| | Department of Crystalline Materials Science | • Nano-Structured Device Engineering • Condensed Matter and Material Physics • Nano-Structured Solid Chemistry • Engineering for Control of Nano-Structures |
| | Department of Energy Engineering and Science | • Energy Materials and Device Engineering • Thermal Energy System Engineering • Energy Environmental Safety Engineering • Plasma Energy Engineering and Science |
| | Department of Quantum Engineering | • Quantum Nanostructure Analysis • Quantum Beam Engineering • Quantum Nanoelectronics |
| | Department of Micro-Nano Systems Engineering | • Bio-Robotics • Integrated Mechatronics Devices • Micro-Nano Mechanical Science |
| | Department of Molecular Design and Engineering | • Organic Materials Design and Engineering • Materials Analysis and Engineering • Inorganic Materials Design and Engineering |
| | Department of Computational Science and Engineering | • Fundamental Computational Science and Engineering • Applied Computational Science and Engineering |

| Graduate Schools | Departments | Courses |
|---|---|--|
| Graduate School of Bioagricultural Sciences | Department of Biosphere Resources Science | • Division of Resources Cycling System • Division of Bioresource Production and Agroecology • Division of Regional Resources Management • Division of Biological Material Sciences • Division of Ecosystem Conservation |
| | Department of Biological Mechanisms and Functions | • Division of Biodynamics • Division of Molecular and Cellular Biology • Division of Biofunctions Development • Division of Bioresource Functions |
| | Department of Applied Molecular Biosciences | • Division of Biomodeling • Division of Biofunctional Chemistry • Division of Applied Biochemistry • Division of Applied Genetics and Physiology |
| | Department of Bioengineering Sciences | • Division of Biotechnology • Division of Socioeconomic Science of Bioagriculture • Division of Plant and Animal Production • Division of Plant Genomics • Division of Molecular Cell Function • Division of International Cooperation in Agricultural Sciences |

| Graduate Schools | Departments | Courses |
|--|---|--|
| Graduate School of International Development | Department of International Development | • International Development • Development Policy • Managerial Economics of Development • Education and Human Development |
| | Department of International Cooperation Studies | • International Cooperation • Comparative Study of Legal and Political Systems • International Cultural Cooperation |
| | Department of International Communication | • International Communication • Linguistic Information Systems • Language Education Sciences • International Languages and Cultures • Communication Sciences |

| Graduate Schools | Departments | Courses |
|--------------------------------|-------------------------|---|
| Graduate School of Mathematics | Division of Mathematics | • Fundamental Mathematics • Natural Mathematics • Social Mathematics • Computational Mathematics • Advanced Topology |

| Graduate Schools | Departments | Courses |
|---|---|--|
| Graduate School of Languages and Cultures | Department of Japanese Language and Culture | • Japanese Language and Cultural Studies • Teaching Japanese as a Foreign Language • Applied Linguistics • Comparative Culture • Japanese Linguistics • Japanese Language Teaching Methodology |
| | Department of Multicultural Studies | • Multicultural Studies • Contemporary Arts and Cultural Studies • American Studies • East Asian Studies • European Studies • Gender Studies • Media Professional Studies |

| Graduate Schools | Departments | Courses |
|--|--|---|
| Graduate School of Environmental Studies | Department of Earth and Environmental Sciences | • Global Environmental Variation • Earth Environmental Systems • Climate Science • Global Geochemistry • Geology and Geobiology • Geochemistry and Cosmochemistry • Earth and Planetary Physics • Earth and Planetary Dynamics • Chronology and Natural History • Radiation and Life Sciences • Global Water Cycle |
| | Department of Environmental Engineering and Architecture | • Sustainable Urban Development • Environmental and Safety Management • Functional Materials and Environment • Material-Systems Science in Environment • Environmental Systems and Planning • Land, Infrastructure and Transportation Management • Architectural and Environmental Design • Building Structure and Construction Systems |
| | Department of Social and Human Environment | • Environmental Policies • Economic Environment • Law and Politics • Sociology • Psychology • Geography |

| Graduate Schools | Departments | Courses |
|--|---|---|
| Graduate School of Information Science | Department of Computer Science and Mathematical Informatics | • Mathematical Informatics • Mathematical Modeling and Analysis • Theory of Computation |
| | Department of Information Engineering | • Integrated Circuits and Systems • Software Science and Technology • Information Network Systems |
| | Department of Media Science | • Speech and Image Science • Intelligent Media Engineering • Cognitive Informatics • Architecture for Information Media Space |
| | Department of Complex Systems Science | • Many-body Systems Science • Materials Informatics • Life-Science Informatics • Emergent Systems • Complex Systems Computation • Information Visualization |
| | Department of Systems and Social Informatics | • Knowledge Society and Information Systems • Designing of Electronic Media and Society • Philosophy of Information • Architecture of Information Society |

*English names for the above departments, programs and courses are tentative.

Global 30 International Programs Taught in English (Graduate)

| Programs | Affiliated Schools | Degree | |
|---|---|-----------|-----------|
| | | Master's | Doctoral |
| Biological and Bioagricultural Sciences Graduate Program | • Graduate School of Science • Graduate School of Bioagricultural Sciences • Graduate School of Medicine | available | |
| Biological and Bioagricultural Sciences Graduate Program | • Graduate School of Science • Graduate School of Bioagricultural Sciences | | available |
| Chemistry Graduate Program | • Graduate School of Science • Graduate School of Engineering | available | available |
| Graduate Program in Comparative Studies of Language and Culture | • Graduate School of Languages and Cultures | available | |
| Graduate Program in Economics and Business Administration | • Graduate School of Economics | available | |
| Medical Science Graduate Program | • Graduate School of Medicine | | available |
| Physics and Mathematics Graduate Program | • Graduate School of Science • Graduate School of Mathematics | available | available |

Other International Programs (Graduate)

| Programs | Affiliated Schools | Degree | |
|--------------------------------------|--|-----------|----------|
| | | Master's | Doctoral |
| Young Leaders' Program (YLP) | • Graduate School of Medicine | available | |
| Global Environmental Leaders Program | • Graduate School of Environmental Studies • Graduate School of Engineering | available | |

Staff

As of May 1, 2011

| Members of the Board of Trustees | | |
|---------------------------------------|----------------------------------|----------------------|
| President | | 1 |
| Trustees | | 7 |
| Auditors | | 2 |
| Staff (Full-time) | | |
| Faculty | Professors | 660 (24)*1 |
| | Associate Professors | 507 (51) |
| | Associate Professors / Lecturers | 111 (54) |
| | Assistant Professors | 430 (210) |
| | Research Associates | 9 |
| | Researchers | 0 (156) |
| School Teachers at Affiliated Schools | | 37 |
| Administrative / Technical Staff*2 | | 1,467 (569) |
| Total | | 3,231 (1,064) |

*1 Data in parenthesis show the number of staff under limited-time contracts.
*2 Data include medical staff of the University Hospital.



Degrees Conferred

FY 2010

| Name of Schools / Graduate Schools | Bachelor's Degree | Master's Degree | Doctoral Degree | Professional Degree |
|------------------------------------|-------------------|-----------------|-----------------|---------------------|
| Letters | 142 | 57 | 26 | - |
| Education | 82 | 49 | 12 | - |
| Law | 166 | 42 | 6 | 78 |
| Economics | 209 | 41 | 11 | - |
| Informatics and Sciences | 89 | - | - | - |
| Science | 273 | 154 | 40 | - |
| Medicine | 324 | 74 | 157 | - |
| Engineering | 764 | 601 | 95 | - |
| Agricultural Sciences | 184 | 138 | 28 | - |
| International Development | - | 55 | 18 | - |
| Mathematics | - | 55 | 10 | - |
| Languages and Cultures | - | 53 | 17 | - |
| Environmental Studies | - | 157 | 37 | - |
| Information Science | - | 130 | 15 | - |
| Human Informatics | - | - | 3 | - |
| Total | 2,233 | 1,606 | 475 | 78 |



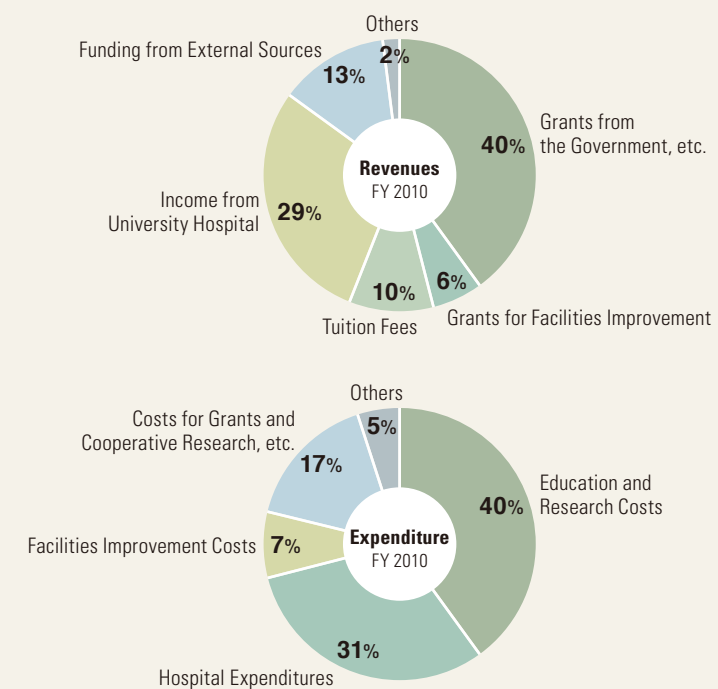
Student Enrollment

As of May 1, 2011

| Name of Schools / Graduate Schools | Undergraduate Courses | | Graduate Courses | | Total |
|------------------------------------|-----------------------|--------------------|------------------|--------------------|---------------|
| | Degree seeking | Non-degree seeking | Degree seeking | Non-degree seeking | |
| Letters | 600 | 59 | 286 | 9 | 954 |
| Education | 326 | 39 | 235 | 21 | 621 |
| Law | 691 | 13 | 365 | 122 | 1,191 |
| Economics | 935 | 15 | 161 | 9 | 1,120 |
| Informatics and Sciences | 343 | 11 | - | - | 354 |
| Science | 1,202 | 13 | 582 | 11 | 1,808 |
| Medicine | 1,525 | 73 | 894 | 25 | 2,517 |
| Engineering | 3,389 | 43 | 1,635 | 16 | 5,083 |
| Agricultural Sciences | 747 | 8 | 452 | 11 | 1,218 |
| International Development | - | - | 284 | 18 | 302 |
| Mathematics | - | - | 176 | 4 | 180 |
| Languages and Cultures | - | - | 211 | 41 | 252 |
| Environmental Studies | - | - | 531 | 21 | 552 |
| Information Science | - | - | 377 | 21 | 398 |
| Human Informatics | - | - | 1 | - | 1 |
| Others | - | 46 | - | - | 46 |
| Total | 9,758 | 320 | 6,190 | 329 | 16,597 |



Financial Outline



Revenues

FY 2010

| | Amount (million yen) |
|-----------------------------------|----------------------|
| Grants from the Government, etc. | 38,689 |
| Grants for Facilities Improvement | 6,053 |
| Tuition Fees | 9,259 |
| Income from University Hospital | 28,357 |
| Funding from External Sources | 12,667 |
| Others | 1,659 |
| Total | 96,684 |

Expenditure

FY 2010

| | Amount (million yen) |
|---|----------------------|
| Education and Research Costs | 37,159 |
| Hospital Expenditures | 28,338 |
| Facilities Improvement Costs | 6,286 |
| Costs for Grants and Cooperative Research, etc. | 15,404 |
| Others | 4,876 |
| Total | 92,063 |

External Funding for Research and Education

FY 2010

| | Number of Cases | Amount (thousand yen) |
|---|-----------------|-----------------------|
| Grants-in-Aid for Scientific Research | 2,267 | 6,533,597 |
| Global COE Programs | 7 | 1,452,760 |
| Project for Establishing Core Universities for Internationalization (Global 30) | 1 | 246,900 |
| GP Grants from Government | 8 | 378,700 |
| Other Governmental Grants | 192 | 3,844,039 |
| Donations and Commissioned Research | 3,865 | 10,171,901 |

*Data are based on the book closed and including numbers / amounts received as research partakers.



Highlights of Research Projects

| Global COE Programs | | | |
|---------------------|--|---|--|
| Year | Field | Program Title | Program Leader |
| 2008 | Medical Sciences | Integrated Functional Molecular Medicine for Neuronal and Neoplastic Disorders | Graduate School of Medicine Prof. SOBUE Gen |
| | Mathematics, Physics, Earth Sciences | Quest for Fundamental Principles in the Universe: from Particles and to the Solar System and the Cosmos | Graduate School of Science Prof. SUGIYAMA Naoshi |
| | Mechanical, Civil Engineering, Architectural & Other Fields of Engineering | COE for Education and Research of Micro-Nano Mechatronics | Graduate School of Engineering Prof. FUKUDA Toshio |
| 2009 | Interdisciplinary, Combined Fields, New Disciplines | From Earth System Science to Basic and Clinical Environmental Studies | Hydrospheric Atmospheric Research Center Prof. YASUNARI Tetsuzo |



Research Projects Supported by Special Coordination Funds for Promoting Science and Technology

| Year | Program Title | Program Leader |
|------|--|--|
| 2006 | Ise Bay Eco-Compatible River Basin Research Project | Graduate School of Engineering Prof. TSUJIMOTO Tetsuro |
| | Special Rearing Plan for Researchers by Institute for Advanced Research, Nagoya University | Institute for Advanced Research |
| | Elucidation of Asbestos-included Mesothelial Carcinogenesis | Graduate School of Medicine Prof. TOYOKUNI Shinya |
| 2008 | Capacity Development of Ph.D. for Social Innovation | Division of Human Resource Development |
| | Nagoya University Global Environmental Leaders Program | Graduate School of Environmental Studies |
| 2009 | Practical Study on Rice Promotion in East African Highlands | International Cooperation Center for Agricultural Education Prof. ASANUMA Shuichi |
| | Construction of Natural Radiation Exposure Study Network | Graduate School of Engineering Prof. YAMAZAWA Hiromi |
| 2010 | Employment Acceleration and Career Development Program for Women Researchers-The Nagoya University Model | The Office for Gender Equality |

Housing for International Researchers and Students



International Ohmeikan House



International Residence



Housing in Noyori Conference Hall

For International Researchers

| Name of the Housing | Facilities | Address |
|---|--|--|
| International Residence HIGASHIYAMA (on campus) | 15 rooms for single persons / couples (34m ²) 2 rooms for families (51.84m ²) | Furo-cho, Chikusa-ku, Nagoya, 464-8601 |
| Researchers Village HIGASHIYAMA (on campus) | 2 rooms for families (76.45m ² /78.33m ²) 4 rooms for families (67.5m ²) | Furo-cho, Chikusa-ku, Nagoya, 464-8601 |
| Researchers Village DAIKO (on campus) | 14 rooms for single persons (28m ²) | 1-1-20, Daiko Minami, Higashi-ku, Nagoya, 461-0047 |
| Researchers Village YAKUMO | 9 rooms for couples / families (53m ²) | 28-1, Yakumo-cho, Showa-ku, Nagoya, 466-0823 |
| Housing in Noyori Conference Hall (on campus) | 3 rooms for single persons (50.98–54.15m ²) 5 rooms for couples (81.01–91.10m ²) 2 rooms for families (97.17m ² /107.35m ²) | Furo-cho, Chikusa-ku, Nagoya, 464-8601 |
| Itaka-cho Residence | 26 rooms for single persons (21.06–21.99m ²) | 2-38, Kamenoi, Meito-ku, Nagoya, 465-0094 |

*We have some private housings outside campus.

For International Students

| Name of the Housing | Facilities | Address |
|---|--|---|
| Foreign Students House | 49 rooms for single persons (12.5m ²) 5 rooms for couples (35m ²) 2 rooms for families (50m ²) | 2-23, Tosei-cho, Showa-ku, Nagoya, 466-0026 |
| International Residence HIGASHIYAMA (on campus) | 95 rooms for single persons (16m ²) 25 rooms for couples (34m ²) | Furo-cho, Chikusa-ku, Nagoya, 464-8601 |
| International Residence YAMATE | 106 rooms for single persons (15m ²) | 165, Takamine-cho, Showa-ku, Nagoya, 466-0811 |
| International Ohmeikan House | 292 rooms for single persons *Japanese students are also housed in this dormitory. | 165, Takamine-cho, Showa-ku, Nagoya, 466-0811 |
| Ishida Memorial International Residence MYOKEN | 93 rooms for single persons (15m ²) | 40-41, Myoken-cho, Showa-ku, Nagoya, 466-0814 |



Library Holdings

The University Library is composed of the Central Library, the Medical Library, and departmental libraries. As of April 1st, 2011, the Library holds 3,112,036 volumes of books in total, including 1,492,334 foreign books, as well as a large amount of electronic resources and audio visual collections.

In order to support students' learning experiences, the library established a space called "learning commons" where students can learn in groups through discussion and receive personal guidance for using electronic resources and software.

Our Partner Institutions

As of Sep. 1, 2011

Academic Exchange Agreements

- = Inter-University Agreement
- = Inter-School Agreement

Asia

BANGLADESH

- Bangladesh Agricultural University
- Bangladesh University of Engineering and Technology
- University of Dhaka
- SAARC Meteorological Research Centre

BHUTAN

- The Centre for Bhutan Studies

CAMBODIA

- Royal University of Law and Economics
- The Royal University of Agriculture
- Royal University of Phnom Penh

CHINA

- Nanjing University
- Central South University
- Jilin University
- Huazhong University of Science and Technology
- Beijing University of Technology
- Chinese Academy of Sciences, Purple Mountain Observatory
- Chengdu Institute of Geology and Mineral Resources
- Chengdu University of Technology
- Tsinghua University
- Chinese Academy of Sciences, National Astronomical Observatories
- China University of Political Science and Law
- East China Normal University
- Peking University
- Fudan University
- Xi'an Jiaotong University
- Chinese Academy of Social Sciences, Institute of Literature and Institute of Literature of National Minorities
- Zhejiang University
- China National School of Administration
- East China University of Political Science and Law
- Chinese Academy of Sciences, Institute of High Energy Physics
- Shanghai Jiao Tong University
- Tongji University

- Northeastern University
- Harbin Institute of Technology
- Beijing International Studies University
- Nanjing University of Aeronautics and Astronautics
- University of Science and Technology of China
- Jiangsu Provincial Academy of Social Sciences (JSASS)
- Chinese Academy of Sciences, Shanghai Institute of Organic Chemistry
- Chinese Academy of Sciences, Institute of Process Engineering
- Polar Research Institute of China
- Southwest Jiaotong University
- Beijing Institute of Technology
- Chinese Academy of Sciences, Research Center for Eco-Environmental Sciences
- Tianjin University
- Chinese Academy of Social Sciences, Institute of Population and Labor Economics
- University of International Business and Economics
- Chinese Academy of Sciences, Xinjiang Institute of Ecology and Geography
- Chinese Academy of Sciences, Shanghai Institute of Ceramics
- Hainan University
- The Chinese University of Hong Kong
- The University of Hong Kong
- The Hong Kong University of Science and Technology
- Renmin University of China
- Shenyang University of Technology

INDIA

- University of Pune
- Tata Institute of Fundamental Research
- Indian Institute of Technology, Madras
- Indian Institute of Science, Bangalore

INDONESIA

- Indonesian National Institute of Aeronautics and Space
- Gadjah Mada University
- The State University of Surabaya
- Universitas Padjadjaran
- Syiah Kuala University
- Diponegoro University
- Agency for the Assessment and Application of Technology (BPPT)
- Institut Teknologi Bandung
- University of Indonesia

REPUBLIC OF KOREA

- Korean Research Institute of Standards and Science, Astronomy Observatory
- Korea University
- Chungnam National University
- Mokpo National University
- Gyeongsang National University
- Korea Maritime University
- Ewha Womans University
- Korea Institute for Advanced Study
- Hanyang University
- Seoul National University
- Kyungnam University
- Sungkyunkwan University
- Korea Legislation Research Institute
- Pukyong National University
- Pusan National University
- Hankuk University of Foreign Studies
- Kyung Hee University
- Chonnam National University
- University of Seoul
- Yonsei University
- Chonbuk National University
- Korea Institute of Geoscience and Mineral Resources
- Kyungpook National University
- Institute of Sunchang Fermented Soybean Products
- Pohang University of Science and Technology

LAOS

- National University of Laos
- National Agriculture and Forestry Research Institute, Lao P.D.R.

MALAYSIA

- MARA University of Technology

MONGOLIA

- Health Sciences University of Mongolia
- National University of Mongolia
- Mineral Resources and Petroleum Authority of Mongolia
- National Legal Center of Mongolia
- Mongolian University of Sciences and Technology
- Mongolian Academy of Sciences, Institute of Geography
- Mongolian Academy of Sciences, Institute of Philosophy, Sociology and Law

NEPAL

- Kathmandu University

PHILIPPINES

- University of the Philippines, Los Banos
- University of the Philippines, Diliman

THAILAND

- Kasetsart University
- Chulalongkorn University
- Chulabhorn Research Institute/ Chulabhorn Graduate Institute

VIETNAM

- Vietnam Institute of State and Law
- Hanoi Law University
- Ho Chi Minh City University of Law
- Hanoi University of Technology
- Vietnamese Academy of Science and Technology, Ho Chi Minh City Institute of Resources Geography
- Vietnam National University, Ho Chi Minh City
- Foreign Trade University

TAIWAN

- National Chengchi University
- National Taiwan Normal University
- Soochow University
- National Chung Cheng University
- National Taiwan University
- National Tsing Hua University

Pacific

AUSTRALIA

- The University of Sydney
- Flinders University
- University of South Australia
- The University of Adelaide
- Monash University
- The University of Melbourne
- The Australian National University
- Commonwealth Scientific and Industrial Research Organisation

NEW ZEALAND

- National Institute of Water and Atmospheric Research
- University of Auckland
- University of Canterbury

Europe

ARMENIA

- Yerevan Physics Institute

AUSTRIA

- Johannes Kepler University Linz
- The Medical University of Vienna

BELGIUM

- Institut Supérieur de Traducteurs et Interprètes

BULGARIA

- Sofia University
- Bulgarian Academy of Sciences, Space Research Institute, Space Astronomy Division
- Bulgarian Academy of Sciences, Institute of Electronics
- Bulgarian Academy of Sciences, Institute of Mathematics

DENMARK

- University of Copenhagen

FINLAND

- Finnish Meteorological Institute

FRANCE

- Université Stendhal (Université de Grenoble 3)
- Université de Paris-Sorbonne, Paris 4
- Ecole Nationale des Ponts et Chaussées (ENPC)
- Université Jean Moulin-Lyon 3
- Ecole Normale Supérieure, Lettres et Sciences Humaines
- Université Paris Diderot - Paris 7
- Université Joseph Fourier (Université de Grenoble 1)
- Université Pierre-Mendès-France (Université de Grenoble 2)
- Grenoble Institute of Technology (Université de Grenoble 4)
- Université de Strasbourg
- Université Panthéon Assas, Paris 2
- Université Paul Cézanne, Aix-Marseille 3
- Université Paris-Est
- Ecole Normale Supérieure de Lyon
- Université de Provence, Aix-Marseille 1
- École Nationale Supérieure d'Architecture Paris Val-de-Seine

GERMANY

- Albert-Ludwigs-Universität Freiburg
- Technische Universität Carolo-Wilhelmina zu Braunschweig
- Universität zu Köln
- Technische Universität München
- Johannes Gutenberg-Universität Mainz
- Deutsches Zentrum für Luft- und Raumfahrt
- Universität Ulm
- Technische Universität Chemnitz
- RWTH Aachen
- Universität Regensburg
- WWU Münster
- Ruhr-Universität Bochum
- Technische Universität Kaiserslautern
- Freie Universität Berlin
- Wissenschaftszentrum Ost- und Südosteuropa Regensburg
- Technische Universität Darmstadt

HUNGARY

- Hungarian Academy of Sciences, Institute for Legal Studies

ITALY

- National Institute of Nuclear Physics (INFN)
- University of Catania
- University of Bologna

KAZAKHSTAN

- Kazakh Humanitarian Law University
- Legislation Research Institute, Republic of Kazakhstan

LATVIA

- Latvian State University

NETHERLANDS

- Wageningen University
- Free University of Amsterdam

NORWAY

- University of Oslo
- University of Tromsø

POLAND

- Medical University of Gdańsk
- Warsaw University of Technology
- University of Warsaw
- Polish Academy of Sciences, Institute of Geological Sciences, Krakow Research Centre

RUSSIA

- Institute of Theoretical and Experimental Physics
- Ministry of Health of Russia, Institute of Biomedical Problems
- Lomonosov Moscow State University
- Russian Academy of Sciences, Siberian Division, Institute of Cytology and Genetics
- Moscow State Engineering and Physics Institute (Technical University-MEPH)
- Russian Academy of Sciences, Institute of Computer Aided Design
- Russian Academy of Sciences, Far Eastern Branch, Institute of Cosmophysical Research and Radiowave Propagation (IKIR)
- Russian Academy of Sciences, Siberian Division, Institute of Solar-Terrestrial Physics (ISTP)

SPAIN

- University of Barcelona

SWEDEN

- Swedish Institute of Space Physics
- University of Lund
- Uppsala University
- Royal Institute of Technology

SWITZERLAND

- University of Bern
- University of Geneva

U.K.

- The University of Sheffield
- The University of Warwick
- The University of Nottingham
- University of East Anglia
- The University of Manchester
- University of Bristol
- University of Leicester
- The University of Oxford
- University of London, School of Oriental and African Studies (SOAS)

UKRAINE

- Ukrainian SSR Academy of Sciences, Institute of Theoretical Physics

UZBEKISTAN

- Samarkand State University
- University of World Economy and Diplomacy
- Tashkent State Institute of Law

North America

CANADA

- Carleton University
- The University of Toronto
- University of Victoria
- York University
- University of Ottawa

USA

- Oberlin College
- University of Michigan
- University of California, Los Angeles
- University of Houston
- North Carolina State University
- Harvard-Yenching Institute
- University of Cincinnati
- University of California, Berkeley
- The University of North Carolina at Chapel Hill
- University of Alaska Fairbanks
- National Oceanic and Atmospheric Administration
- Massachusetts Institute of Technology, Haystack Observatory
- Harvard Medical School
- Tulane University
- University of Pennsylvania
- University of California, San Diego
- Colorado School of Mines

- St. Olaf College
- Southern Illinois University, Carbondale
- University of Illinois at Urbana-Champaign
- University of Kentucky
- New York University
- Duke University
- Johns Hopkins University
- University of Wisconsin Law School
- University of Maryland
- University of Washington
- Northwestern University
- The University of Texas

- The University of Chicago
- Green Mountain College
- Michigan State University
- UC Santa Barbara
- University of Minnesota
- University of Pittsburgh

Latin America and the Caribbean

ARGENTINE

- National University of Rosario
- Luis F. Leloir, Campomar Foundation, The Research Institute of Biochemistry

BOLIVIA

- Universidad Mayor de San Andres, La Paz

BRAZIL

- Ministry of Science and Technology, National Institute for Space Research
- Fundacao Joaquim Nabuco
- Universidade de Brasilia - UnB
- Universidade de São Paulo

GUATEMALA

- Del Valle de Guatemala University

MEXICO

- Universidad de Sonora

Middle East

TURKEY

- Bilkent University

Africa

EGYPT

- Tanta University
- Cairo University

GHANA

- University of Ghana

KENYA

- University of Nairobi
- African Institute for Capacity Development (AICAD)

SOUTH AFRICA

- South African Astronomical Observatory

Others (International Organization)

- Southeast Asian Regional Center for Graduate Study and Research in Agriculture (SEARCA)
- European Organization for Nuclear Research (CERN)

Agreements for Industry-University Collaboration

Europe

U.K.

- The University of Warwick

North America

USA

- North Carolina State University

Agreements for International Joint Research

Asia

REPUBLIC OF KOREA

- Sungkyunkwan University

Pacific

AUSTRALIA

- The University of New South Wales

Europe

GERMANY

- Ruhr-Universität Bochum

North America

USA

- The University of Texas at Dallas

Others (International Organization)

- The Ministry of Science and Technology of Brazil
- The National Institute of Space Research (INPE)
- The Japan Aerospace Exploration Agency (JAXA), Institute of Space and Astronautical Science (ISAS)

International Networks

- Academic Consortium 21 (AC21)
- International Forum of Public Universities (IFPU)
- Collège doctoral franco-japonais
- University Mobility in Asia and the Pacific (UMAP)
- OpenCourseWare Consortium
- The G8 University Summit
- Canada-Japan Strategic Student Exchange Program



Overseas Research and Education Bases

- Shanghai Liaison Office (China)
- Uzbekistan Office (Tashkent, Uzbekistan)
- European Center (Freiburg, Germany)
- Technology Partnership, Inc. (North Carolina, USA)
- Research and Education Centers for Japanese Law (Uzbekistan, Mongolia, Vietnam, Cambodia)
- Field Research Center (Ulaanbaatar, Mongolia)



Shanghai Liaison Office (Shanghai, China)



Uzbekistan Office (Tashkent, Uzbekistan)



European Center (Freiburg, Germany)



Technology Partnership, Inc. (North Carolina, USA)



Research and Education Center for Japanese Law (Tashkent, Uzbekistan)



Research and Education Center for Japanese Law (Ulaanbaatar, Mongolia)



Research and Education Center for Japanese Law (Hanoi, Vietnam)



Research and Education Center for Japanese Law (Ho Chi Minh, Vietnam)



Research and Education Center for Japanese Law (Phnom Penh, Cambodia)



Field Research Center (Ulaanbaatar, Mongolia)

International Exchange

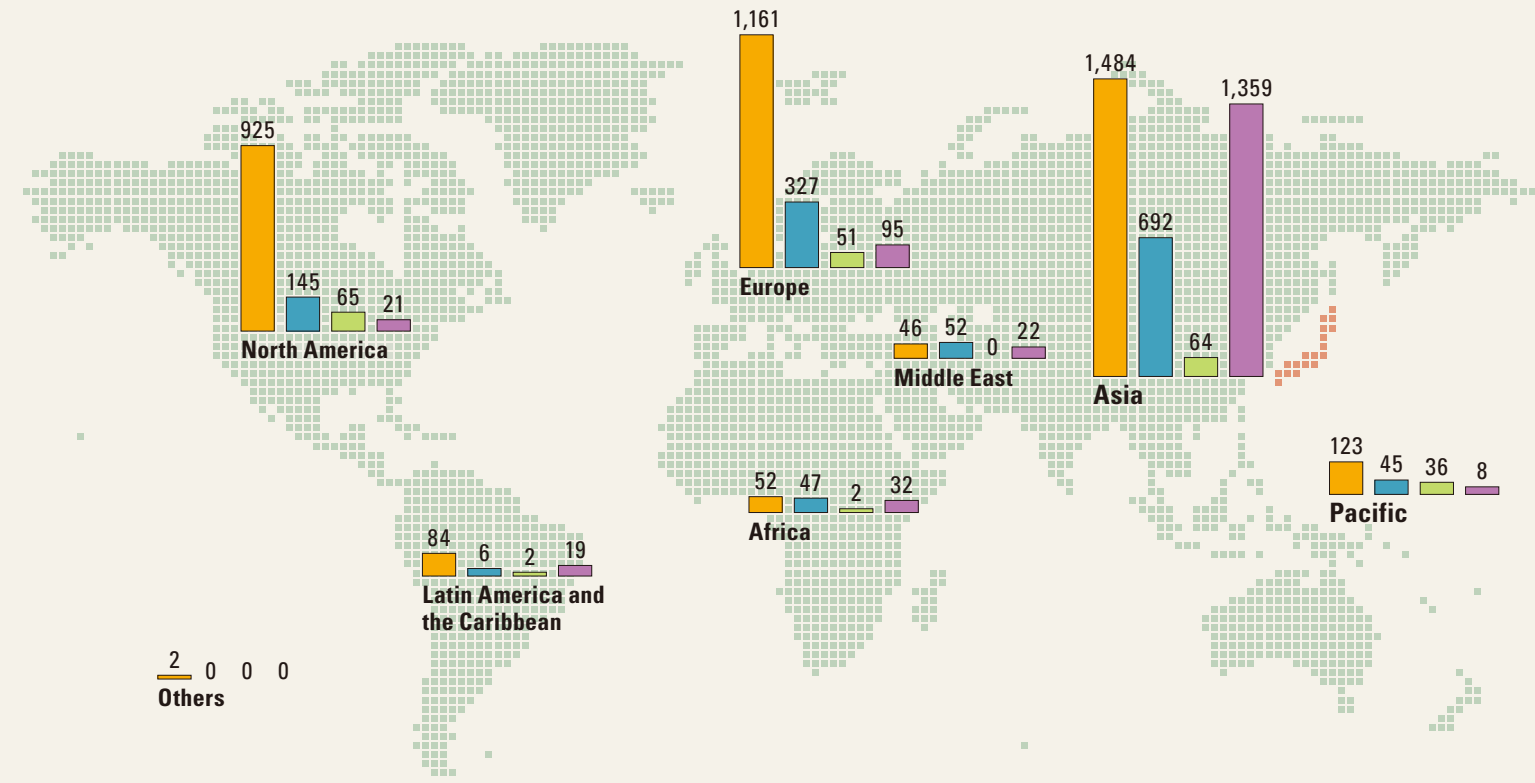
International Students by Country / Region

| Region | Country | Count |
|-----------------|-------------------|----------|
| Asia | Bangladesh | 29 |
| | Brunei | 1 |
| | Cambodia | 43 |
| | China | 834 |
| | India | 13 |
| | Indonesia | 51 |
| | Republic of Korea | 148 |
| | Laos | 17 |
| | Malaysia | 46 |
| | Mongolia | 17 |
| | Myanmar | 11 |
| | Nepal | 13 |
| | Pakistan | 2 |
| | Philippines | 16 |
| | Sri Lanka | 6 |
| | Taiwan | 46 |
| | Thailand | 21 |
| Vietnam | 45 | |
| Subtotal | 1,359 | |
| Pacific | Australia | 6 |
| | Papua New Guinea | 2 |
| | Subtotal | 8 |
| Europe | Albania | 1 |
| | Armenia | 1 |
| | Azerbaijan | 1 |
| | Bulgaria | 3 |
| | Croatia | 1 |
| | France | 6 |
| | Germany | 10 |
| | Hungary | 3 |
| | Ireland | 1 |

| | | | |
|---------------|---------------------------------|-----------|---|
| North America | Canada | 4 | |
| | USA | 17 | |
| | Subtotal | 21 | |
| | Latin America and the Caribbean | Bolivia | 2 |
| | | Brazil | 7 |
| | | Colombia | 1 |
| | | Ecuador | 1 |
| | | Guatemala | 1 |
| | | Honduras | 2 |
| | | Mexico | 1 |
| | | Panama | 1 |
| | | Paraguay | 1 |
| | | Peru | 1 |
| | | Venezuela | 1 |
| | Subtotal | 19 | |

As of May 1, 2011

| | | |
|---------------------------------------|--------------------------------|--------------|
| Middle East | Iran | 7 |
| | Iraq | 2 |
| | Israel | 2 |
| | Palestinian National Authority | 1 |
| | Turkey | 10 |
| | Subtotal | 22 |
| | Africa | Cameroon |
| The Democratic Republic of the Congo | | 1 |
| Egypt | | 4 |
| Eritrea | | 1 |
| Ethiopia | | 4 |
| Gabonese Republic | | 1 |
| Kenya | | 8 |
| Madagascar | | 3 |
| Malawi | | 2 |
| Mozambique | | 2 |
| Nigeria | | 1 |
| Senegal | | 1 |
| Tanzania | | 1 |
| Tunisia | | 1 |
| Zambia | | 1 |
| Subtotal | | 32 |
| Total (76 Countries / Regions) | | 1,556 |



■ Researchers Going Abroad by Area / Total: 3,877 (FY 2010)
■ International Researchers by Area / Total: 1,314 (FY 2010)
■ Students Going Abroad by Area / Total: 220 (FY 2010)
■ International Students by Area / Total: 1,556 (As of May 1, 2011)

International Students by School

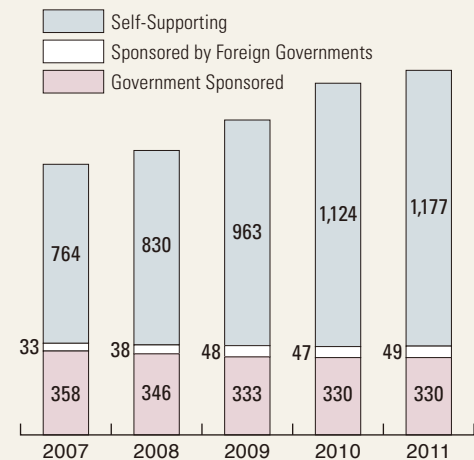
As of May 1, 2011

| School / Graduate School | Count |
|---|--------------|
| Letters | 134 |
| Education | 73 |
| Law | 124 |
| Economics | 116 |
| Informatics and Sciences | 13 |
| Science | 68 |
| Medicine | 87 |
| Engineering | 368 |
| Agricultural Sciences | 52 |
| International Development | 158 |
| Mathematics | 6 |
| Languages and Cultures | 119 |
| Environmental Studies | 123 |
| Information Science | 72 |
| Education Center for International Students | 41 |
| Others | 2 |
| Total | 1,556 |

International Students by Funding Source

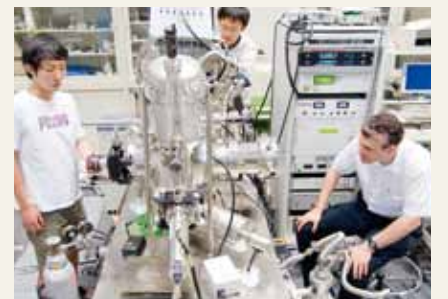
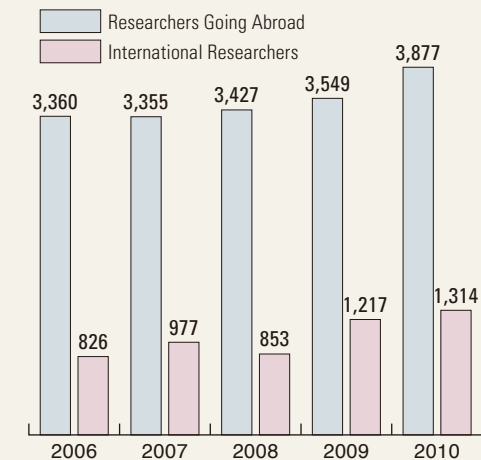
As of every May

| | 2007 | 2008 | 2009 | 2010 | 2011 |
|----------------------------------|--------------|--------------|--------------|--------------|--------------|
| Government Sponsored | 358 | 346 | 333 | 330 | 330 |
| Sponsored by Foreign Governments | 33 | 38 | 48 | 47 | 49 |
| Self-Supporting | 764 | 830 | 963 | 1,124 | 1,177 |
| Total | 1,155 | 1,214 | 1,344 | 1,501 | 1,556 |

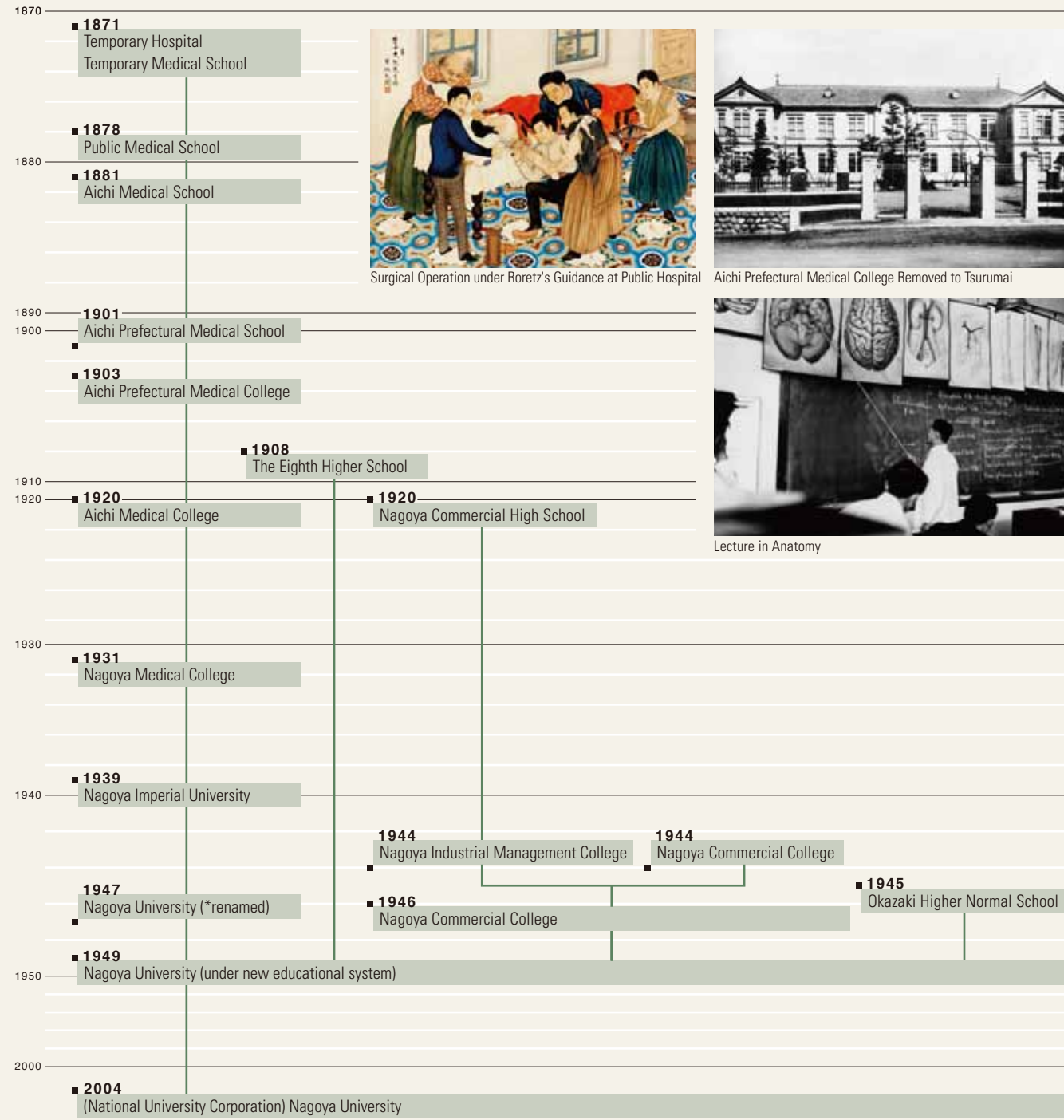


Trends of Staff Exchange

| | 2006 | 2007 | 2008 | 2009 | 2010 |
|---------------------------|-------|-------|-------|-------|-------|
| Researchers Going Abroad | 3,360 | 3,355 | 3,427 | 3,549 | 3,877 |
| International Researchers | 826 | 977 | 853 | 1,217 | 1,314 |



Historical Chart



Surgical Operation under Roretz's Guidance at Public Hospital



Aichi Prefectural Medical College Removed to Tsurumai



Lecture in Anatomy

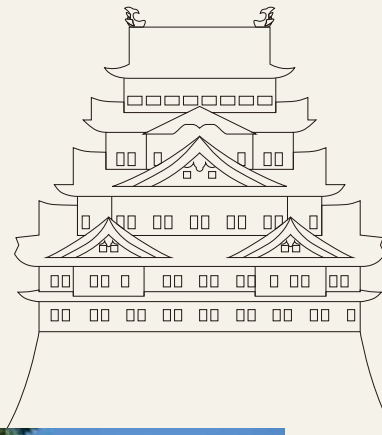
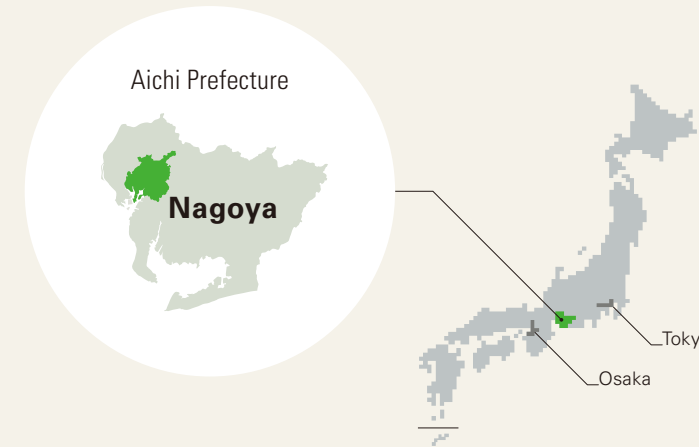


Toyoda Auditorium (around 1960)



Toyoda Auditorium (2010)

The City of Nagoya



Nagoya Castle

✓ Nagoya City ranks among the top 10 economies worldwide, boasting leading industries in automotive manufacturing, machinery, electronics and ceramics.

✓ The Chubu area of Japan is particularly renowned as the home of Oda Nobunaga, Toyotomi Hideyoshi and Tokugawa Ieyasu, three leaders who unified Japan over 400 years ago, bringing an end to the "Period of Warring States."

✓ Nagoya Castle, originally built by Tokugawa Ieyasu and famous for the golden dolphins found on its donjon, serves as the landmark of the region.



JR Central Towers



Nagoya Noh Theater



Arimatsu Shibori Matsuri (festival)



Nagoya City Archives



The Golden Dolphin



Nagoya Congress Center



Nagoya Port Triton



Nagoya City Art Museum



OASIS 21