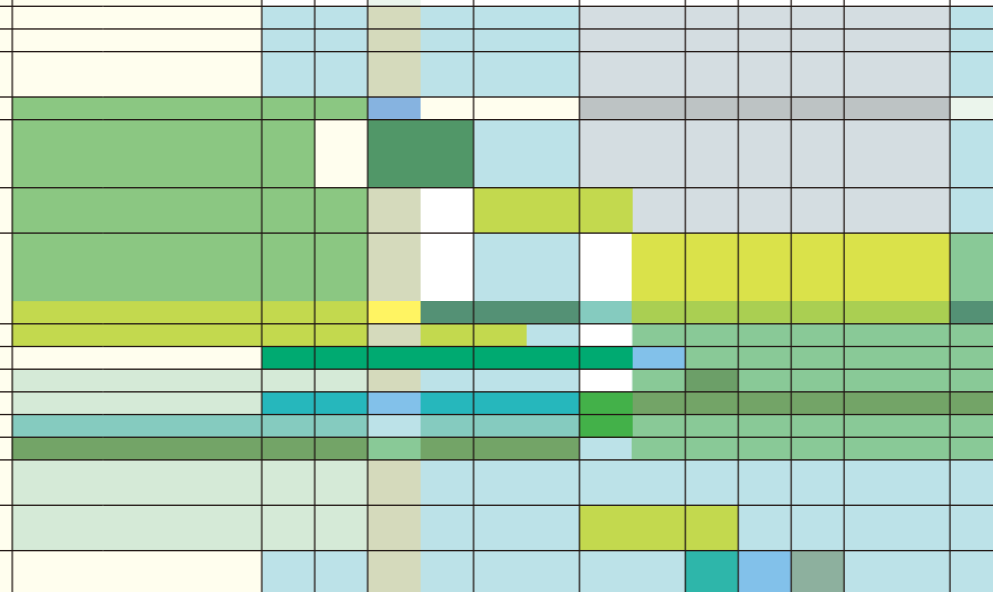


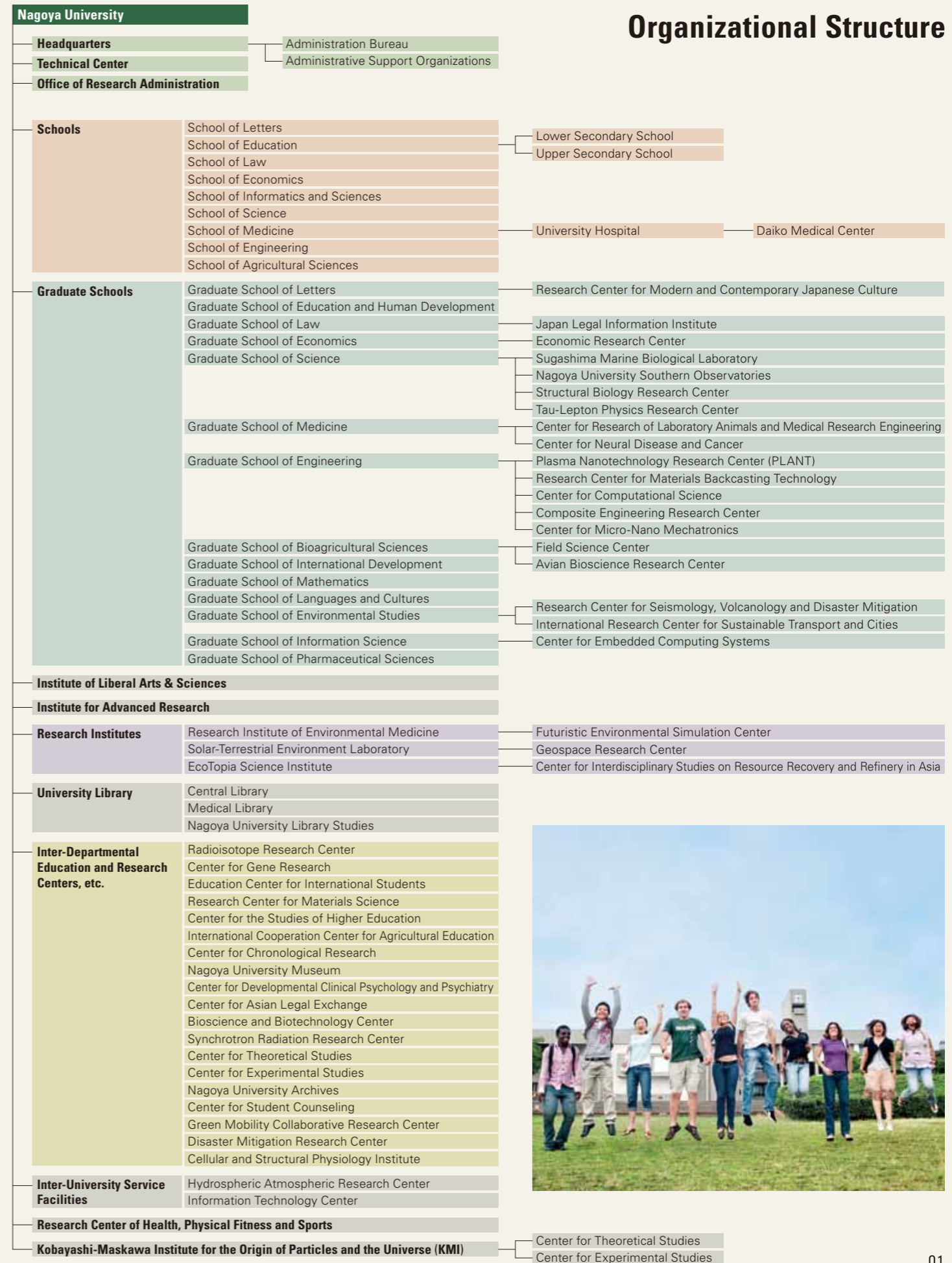
2013





- 01 Organizational Structure
- 02 Schools (Undergraduate Courses)
- 03 Graduate Schools (Graduate Courses)
- 06 Staff
Student Enrollment
- 07 Degrees Conferred
Financial Outline
- 08 Highlights of Research and Education Programs
- 09 Housing for International Researchers and Students
Library Holdings
- 10 Our Partner Institutions
- 14 International Exchange
- 16 Historical Chart
- 17 The City of Nagoya

Organizational Structure



Schools (Undergraduate Courses)

Schools	Departments	Courses / Programs
School of Letters	Department of Humanities	<ul style="list-style-type: none"> Philosophy and Civilization Theory Courses History and Cultural History Courses Literature and Linguistics Courses Environmental and Behavioral Science Courses
	Department of Human Developmental Sciences	<ul style="list-style-type: none"> Lifelong Education and Development Course School Education and Information Science Course International Education and Culture Course Human Psychology Course Counseling and Psychotherapy Course
School of Law	Department of Law and Political Science	<ul style="list-style-type: none"> Fundamental Positive Law Fundamental Political Science Contemporary Legal Disciplines Dispute Settlement Law Business Economics Law Public Policy International Relations Legal and Administrative Informatics
	Department of Economics	<ul style="list-style-type: none"> Theoretical Economics Applied Economics
School of Economics	Department of Business Administration	<ul style="list-style-type: none"> Corporate Management Information Accounting
	Department of Natural Science Informatics	<ul style="list-style-type: none"> Complex Systems and Informatics Mathematical Sciences and Informatics Environmental Science of Earth and Materials
School of Informatics and Sciences	Department of Social and Human Science Informatics	<ul style="list-style-type: none"> Juristic and Economic Studies of Environments Sociological-Geographical Studies of Environment Psychology Society and Media Studies
	Department of Mathematics	<ul style="list-style-type: none"> Mathematics
School of Science	Department of Physics	<ul style="list-style-type: none"> Physics
	Department of Chemistry	<ul style="list-style-type: none"> Chemistry
	Department of Biological Science	<ul style="list-style-type: none"> Biological Science
	Department of Earth and Planetary Sciences	<ul style="list-style-type: none"> Earth and Planetary Sciences
	Department of Medicine	<ul style="list-style-type: none"> Anatomy Physiology Biochemistry Pathology Microbiology Medical Zoology Immunology Legal Medicine Hygiene Public Health Preventive Medicine Internal Medicine, Neurology Surgery, Thoracic Surgery Orthopedic Surgery Obstetrics and Gynecology Ophthalmology Psychiatry Pediatrics Dermatology Urology Otorhinolaryngology Radiology Medicine Anesthesiology Oral and Maxillofacial Surgery Neurosurgery Geriatrics Emergency Medicine Clinical Laboratory Medicine
Department of Health Sciences	Department of Nursing	<ul style="list-style-type: none"> Fundamentals of Nursing Clinical Nursing Human Development Nursing and Midwifery Public Health and Home Care Nursing
	Department of Radiological Technology	<ul style="list-style-type: none"> Basic Radiological Technology Medical Radiological Technology
	Department of Medical Technology	<ul style="list-style-type: none"> Basic Medical Technology Medical Laboratory Technology
	Department of Physical Therapy	<ul style="list-style-type: none"> Basic Physical Therapy Applied Physical Therapy
	Department of Occupational Therapy	<ul style="list-style-type: none"> Basic Occupational Therapy Applied Occupational Therapy
School of Engineering	Department of Chemical and Biological Engineering	<ul style="list-style-type: none"> Applied Chemistry Course Chemical Engineering Course Biotechnology Course
	Department of Physical Science and Engineering	<ul style="list-style-type: none"> Materials Engineering Course Applied Physics Course Quantum Science and Energy Engineering Course
	Department of Electrical and Electronic Engineering and Information Engineering	<ul style="list-style-type: none"> Electrical and Electronic Engineering Course Information Engineering Course
	Department of Mechanical and Aerospace Engineering	<ul style="list-style-type: none"> Mechanical Engineering Course Electronic-Mechanical Engineering Course Aerospace Engineering Course
	Department of Civil Engineering and Architecture	<ul style="list-style-type: none"> Civil Engineering Course Architecture Course
School of Agricultural Sciences	Department of Bioenvironmental Sciences	<ul style="list-style-type: none"> Bioenvironmental Sciences
	Department of Bioresource Sciences	<ul style="list-style-type: none"> Bioresource Sciences
	Department of Applied Biosciences	<ul style="list-style-type: none"> Applied Biosciences

*English names for the above departments, courses and programs are tentative.

Global 30 International Programs Taught in English (Undergraduate)

Programs	Affiliated Schools	Majors
Automotive Engineering	Engineering	<ul style="list-style-type: none"> Mechanical and Aerospace Engineering Electrical and Electronic Engineering and Information Engineering
		<ul style="list-style-type: none"> Biological Science
Biological Sciences	<ul style="list-style-type: none"> Science Agricultural Science 	<ul style="list-style-type: none"> Applied Biosciences
Chemistry	Science	<ul style="list-style-type: none"> Chemistry
	Engineering	<ul style="list-style-type: none"> Chemical and Biological Engineering
Fundamental and Applied Physics	Science	<ul style="list-style-type: none"> Physics
	Engineering	<ul style="list-style-type: none"> Physical Science and Engineering
Social Sciences	Law	<ul style="list-style-type: none"> Law and Political Science
	Economics	<ul style="list-style-type: none"> Economics and Business Administration

Graduate Schools (Graduate Courses)

Graduate Schools	Departments	Courses
Graduate School of Letters	Department of Humanities	<ul style="list-style-type: none"> Comparative Studies of Humanities Japanese Culture Philosophy Linguistics Eastern Studies Japanese History Oriental History World History Art History and Archaeology Japanese Literature and Linguistics Western Literature and Linguistics
	Department of Educational Sciences	<ul style="list-style-type: none"> Lifelong Education and Development School Education and Information Sciences Foundations of Education and Human Development Higher Education Sports Science for Lifelong Physical Activity
Graduate School of Education and Human Development	Department of Psychology and Human Developmental Sciences	<ul style="list-style-type: none"> Psychological Sciences Human Development and Clinical Psychology Sports Behavioral Sciences
	Department of the Combined Graduate Program in Law and Political Science	<ul style="list-style-type: none"> Core Law and Political Science Contemporary Legal Systems International Comparative Law and Political Science Asian Law and Political Science
Graduate School of Law	JD Program for Legal Practice (Nagoya University Law School)	<ul style="list-style-type: none"> Core Law Applied Contemporary Law
	Department of Socio-Economic Systems	<ul style="list-style-type: none"> Analysis on Markets and Institutions Socio-Economic Analysis Analysis on the System of Policy Making Socio-Environmental System
Graduate School of Economics	Department of Industrial Management Systems	<ul style="list-style-type: none"> Corporate System Management Innovation Creation of Information
	Division of Particle and Astrophysical Sciences	<ul style="list-style-type: none"> Fundamental Theoretical Physics Cosmology and Astrophysics Interstellar Physics Elementary Particle Physics Hadron Physics Atomic Physics Solar-Terrestrial Relationships Physical Processes in Solar-Terrestrial Environment Chemical Processes in Solar-Terrestrial Environment
Graduate School of Science	Division of Material Science	<ul style="list-style-type: none"> Interdisciplinary Chemical Sciences Molecular Biophysics Inorganic and Analytical Chemistry Organic Chemistry and Biochemistry Physical Chemistry Biophysics Fundamental Condensed Matter Physics Solid State Physics Applied Condensed Matter Physics Materials Science
	Division of Biological Science	<ul style="list-style-type: none"> Biomolecular Architecture Molecular Genetics Molecular Information and Cellular Regulation Developmental Biology Genetic Mechanism Supramolecular Biology Cell Regulation Biological Systems Environmental Biology Gene Analysis Genomics and Clock Bio-nanomachine Reproduction and Genetics
	Doctor of Medical Science	<ul style="list-style-type: none"> Biological Chemistry Microbiology and Immunology Internal Medicine High-Technology Application of Medicine Advanced Medical Science Laboratory Animal Science
Graduate School of Medicine	Program in Integrated Molecular Medicine	<ul style="list-style-type: none"> Cell Science Clinical Neurosciences Head and Neck and Sensory Organ Medicine Neuroscience Oncology Clinical Pharmacology Higher Nervous Control Regulation of Organ Function Molecular and Cellular Adaptation
		<ul style="list-style-type: none"> Anatomy and Cell Biology Pathology Surgery Musculoskeletal and Cutaneous Medicine Biomedical Regulation Development Clinical Management Medicine
		<ul style="list-style-type: none"> Social Life Science Medicine in Growth and Aging Maternal and Perinatal Care Psychiatry for Parents and Children Comprehensive Ambulatory Medicine Health Promotion Medicine
Master of Medical Science	Program in Medical Science	
	Program in Medical Sciences, Healthcare Administration Course	

Graduate Schools	Departments	Courses	
Graduate School of Medicine	Doctor's Course, Initial Period	Program in Nursing	<ul style="list-style-type: none"> Fundamentals of Nursing Clinical Nursing Human Development Nursing and Midwifery
		Program in Radiological and Medical Laboratory Sciences	<ul style="list-style-type: none"> Radiological Sciences Pathophysiological Laboratory Sciences
		Program in Physical and Occupational Therapy	<ul style="list-style-type: none"> Physical Therapy Occupational Therapy
	Doctor's Course, Final Period	Program in Nursing	<ul style="list-style-type: none"> Nursing for Health Risk Nursing for Developmental Health
		Program in Radiological and Medical Laboratory Sciences	<ul style="list-style-type: none"> Radiological Sciences Pathophysiological Laboratory Sciences
		Program in Physical and Occupational Therapy	<ul style="list-style-type: none"> Physical Therapy

Graduate Schools	Departments	Courses
Graduate School of Engineering	Department of Applied Chemistry, Chemical Engineering and Biotechnology	<ul style="list-style-type: none"> Physical Chemistry Organic Chemistry Inorganic and Analytical Chemistry Materials Processing Engineering Chemical Systems Engineering Biotechnology Biomaterials Energy and Environmental Chemistry Energy Process and Ecomaterials
	Department of Materials, Physics and Energy Engineering	<ul style="list-style-type: none"> Materials Processing Bioinspired Materials Structural Materials and Processing Ecological Materials Information and Electronic Materials Materials Characterization Quantum Physics and Engineering Structural Physics Soft and Solid Matter Physics Energy Related Materials Engineering Quantum and Energy System Engineering Energy Quantum Beam and Materials Engineering Energy Safety Engineering EcoTopia-oriented Materials Engineering Ecological Electronic Device Engineering Energy System Materials and Recycling Engineering
	Department of Electrical Engineering and Computer Science	<ul style="list-style-type: none"> Power Engineering and Systems Advanced Energy Science Materials and Device Processing Solid State Devices Quantum Devices Communication and Control Systems Computer Engineering Information Systems Space Electromagnetic Environment Environment-friendly Electric Power System Electron Beam Applications and Electronic Nanodevices
	Department of Mechanical Science and Engineering	<ul style="list-style-type: none"> Advanced Materials and Manufacturing Thermo-Fluids and Environmental Engineering Biomechanics and Human-Machine Systems Micro-Nano Mechanical Systems Mechatronics Design Sensing and Control Mechanical Engineering for Sustainable Society Human Centered Design
	Department of Aerospace Engineering	<ul style="list-style-type: none"> Aerodynamics and Propulsion Structure and Control Environmental Thermo-Fluid Systems
	Department of Civil Engineering	<ul style="list-style-type: none"> Structural Engineering and Materials River and Maritime Engineering Soil Mechanics and Geotechnical Engineering Infrastructure Systems Planning and Management Environment Cohabitation and Ecological System
	Department of Crystalline Materials Science	<ul style="list-style-type: none"> Nano-Structured Device Engineering Condensed Matter and Material Physics Nano-Structured Solid Chemistry Engineering for Control of Nano-Structures
	Department of Energy Engineering and Science	<ul style="list-style-type: none"> Energy Materials and Device Engineering Thermal Energy System Engineering Energy Environmental Safety Engineering Plasma Energy Engineering and Science
	Department of Quantum Engineering	<ul style="list-style-type: none"> Quantum Nanostructure Analysis Quantum Beam Engineering Quantum Nanoelectronics
	Department of Micro-Nano Systems Engineering	<ul style="list-style-type: none"> Bio-Robotics Integrated Mechatronics Devices Micro-Nano Mechanical Science
	Department of Molecular Design and Engineering	<ul style="list-style-type: none"> Organic Materials Design and Engineering Materials Analysis and Engineering Inorganic Materials Design and Engineering
	Department of Computational Science and Engineering	<ul style="list-style-type: none"> Fundamental Computational Science and Engineering Applied Computational Science and Engineering

Graduate Schools	Departments	Courses
Graduate School of Bioagricultural Sciences	Department of Biosphere Resources Science	<ul style="list-style-type: none"> Division of Resources Cycling System Division of Bioresource Production and Agroecology Division of Regional Resources Management Division of Biological Material Sciences Division of Ecosystem Conservation
	Department of Biological Mechanisms and Functions	<ul style="list-style-type: none"> Division of Biodynamics Division of Molecular and Cellular Biology Division of Biofunctions Development Division of Bioresource Functions
	Department of Applied Molecular Biosciences	<ul style="list-style-type: none"> Division of Biomodeling Division of Biofunctional Chemistry Division of Applied Biochemistry Division of Applied Genetics and Physiology
	Department of Bioengineering Sciences	<ul style="list-style-type: none"> Division of Biotechnology Division of Socioeconomic Science of Bioagriculture Division of Plant and Animal Production Division of Plant Genomics Division of Molecular Cell Function Division of International Cooperation in Agricultural Sciences

Graduate Schools	Departments	Courses
Graduate School of International Development	Department of International Development	<ul style="list-style-type: none"> International Development Development Policy Managerial Economics of Development Education and Human Development
	Department of International Cooperation Studies	<ul style="list-style-type: none"> International Cooperation Comparative Study of Legal and Political Systems International Cultural Cooperation
	Department of International Communication	<ul style="list-style-type: none"> International Communication Linguistic Information Systems Language Education Sciences International Languages and Cultures Communication Sciences

Graduate Schools	Departments	Courses
Graduate School of Mathematics	Division of Mathematics	<ul style="list-style-type: none"> Fundamental Mathematics Natural Mathematics Social Mathematics Computational Mathematics Advanced Topology

Graduate Schools	Departments	Courses
Graduate School of Languages and Cultures	Department of Japanese Language and Culture	<ul style="list-style-type: none"> Japanese Language and Cultural Studies Teaching Japanese as a Foreign Language Applied Linguistics Comparative Culture Japanese Linguistics Japanese Language Teaching Methodology
	Department of Multicultural Studies	<ul style="list-style-type: none"> Multicultural Studies Contemporary Arts and Cultural Studies American Studies East Asian Studies European Studies Gender Studies Media Professional Studies

Graduate Schools	Departments	Courses
Graduate School of Environmental Studies	Department of Earth and Environmental Sciences	<ul style="list-style-type: none"> Global Environmental Variation Earth Environmental Systems Climate Science Global Geochemistry Geology and Geobiology Geochemistry and Cosmochemistry Earth and Planetary Physics Earth and Planetary Dynamics Chronology and Natural History Radiation and Life Sciences Global Water Cycle
	Department of Environmental Engineering and Architecture	<ul style="list-style-type: none"> Sustainable Urban Development Environmental and Safety Management Functional Materials and Environment Material-Systems Science in Environment Environmental Systems and Planning Land, Infrastructure and Transportation Management Architectural and Environmental Design Building Structure and Construction Systems
	Department of Social and Human Environment	<ul style="list-style-type: none"> Environmental Policies Economic Environment Law and Politics Sociology Psychology Geography

Graduate Schools	Departments	Courses
Graduate School of Information Science	Department of Computer Science and Mathematical Informatics	<ul style="list-style-type: none"> Mathematical Informatics Mathematical Modeling and Analysis Theory of Computation
	Department of Information Engineering	<ul style="list-style-type: none"> Integrated Circuits and Systems Software Science and Technology Information Network Systems
	Department of Media Science	<ul style="list-style-type: none"> Speech and Image Science Intelligent Media Engineering Cognitive Informatics Architecture for Information Media Space
	Department of Complex Systems Science	<ul style="list-style-type: none"> Many-body Systems Science Materials Informatics Life-Science Informatics Emergent Systems Complex Systems Computation Information Visualization
	Department of Systems and Social Informatics	<ul style="list-style-type: none"> Knowledge Society and Information Systems Designing of Electronic Media and Society Philosophy of Information Architecture of Information Society

Graduate Schools	Departments	Courses
Graduate School of Pharmaceutical Sciences	Department of Basic Medicinal Sciences	<ul style="list-style-type: none"> Organic Chemistry Bioscience Structural Biology

*English names for the above departments, programs and courses are tentative.

Global 30 International Programs Taught in English (Graduate)

Programs	Affiliated Schools	Degree	
		Master's	Doctoral
Biological and Bioagricultural Sciences Graduate Program	<ul style="list-style-type: none"> Graduate School of Science Graduate School of Bioagricultural Sciences Graduate School of Medicine 	available	
Biological and Bioagricultural Sciences Graduate Program	<ul style="list-style-type: none"> Graduate School of Science Graduate School of Bioagricultural Sciences 		available
Chemistry Graduate Program	<ul style="list-style-type: none"> Graduate School of Science Graduate School of Engineering 	available	available
Graduate Program in Comparative Studies of Language and Culture	<ul style="list-style-type: none"> Graduate School of Languages and Cultures 	available	
Graduate Program in Economics and Business Administration	<ul style="list-style-type: none"> Graduate School of Economics 	available	
Medical Science Graduate Program	<ul style="list-style-type: none"> Graduate School of Medicine 		available
Physics and Mathematics Graduate Program	<ul style="list-style-type: none"> Graduate School of Science Graduate School of Mathematics 	available	available

Other International Programs (Graduate)

Programs	Affiliated Schools	Degree	
		Master's	Doctoral
Young Leaders' Program (YLP)	<ul style="list-style-type: none"> Graduate School of Medicine 	available	
Global Environmental Leaders Program	<ul style="list-style-type: none"> Graduate School of Environmental Studies Graduate School of Engineering 	available	

Staff

As of May 1, 2012

Members of the Board of Trustees		
President		1
Trustees		7
Auditors		2
Staff (Full-time)		
Faculty	Professors	646 (36)*1
	Associate Professors	512 (61)
	Associate Professors / Lecturers	109 (71)
	Assistant Professors	430 (245)
	Research Associates	8
	Researchers	0 (151)
School Teachers at Affiliated Schools		37
Administrative / Technical Staff*2		1,462 (605)
Total		3,214 (1,169)

*1 Data in parenthesis show the number of staff under limited-time contracts.
*2 Data include medical staff of the University Hospital.



Student Enrollment

As of May 1, 2012

Name of Schools / Graduate Schools	Undergraduate Courses		Graduate Courses		Total
	Degree seeking	Non-degree seeking	Degree seeking	Non-degree seeking	
Letters	590	62	279	10	941
Education	323	34	245	20	622
Law	685	18	334	84	1,121
Economics	935	18	131	7	1,091
Informatics and Sciences	350	9	-	-	359
Science	1,210	15	577	8	1,810
Medicine	1,544	66	932	25	2,567
Engineering	3,405	37	1,615	23	5,080
Agricultural Sciences	741	9	419	11	1,180
International Development	-	-	285	23	308
Mathematics	-	-	183	6	189
Languages and Cultures	-	-	209	38	247
Environmental Studies	-	-	503	17	520
Information Science	-	-	369	31	400
Human Informatics	-	-	1	-	1
Pharmaceutical Sciences	-	-	30	2	32
Others	-	46	-	-	46
Total	9,783	314	6,112	305	16,514



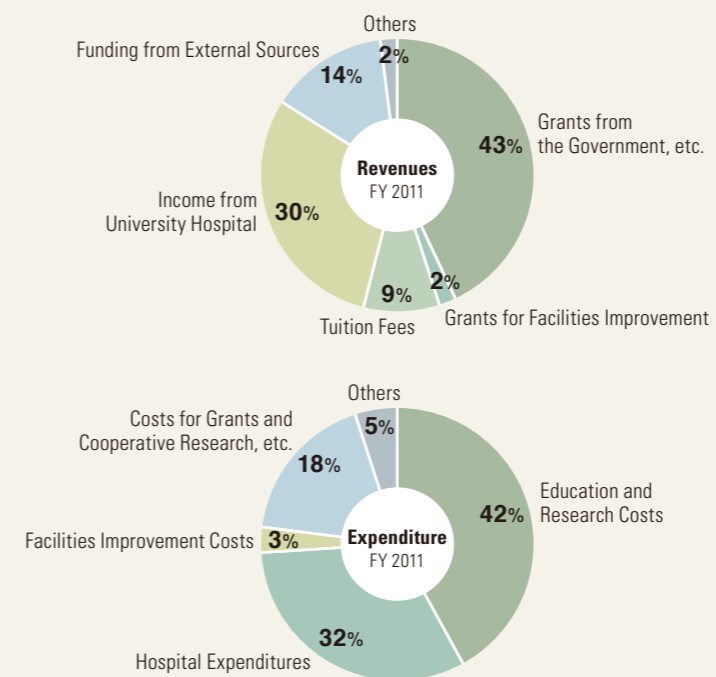
Degrees Conferred

FY 2011

Name of Schools / Graduate Schools	Bachelor's Degree	Master's Degree	Doctoral Degree	Professional Degree
Letters	148	58	18	-
Education	84	42	17	-
Law	166	32	7	84
Economics	222	56	13	-
Informatics and Sciences	77	-	-	-
Science	267	180	47	-
Medicine	319	82	170	-
Engineering	794	614	103	-
Agricultural Sciences	186	175	30	-
International Development	-	59	16	-
Mathematics	-	50	7	-
Languages and Cultures	-	39	12	-
Environmental Studies	-	154	28	-
Information Science	-	117	37	-
Human Informatics	-	-	1	-
Total	2,263	1,658	506	84



Financial Outline



Revenues		FY 2011
		Amount (million yen)
Grants from the Government, etc.		42,239
Grants for Facilities Improvement		2,431
Tuition Fees		9,186
Income from University Hospital		29,788
Funding from External Sources		13,627
Others		1,861
Total		99,138

Expenditure		FY 2011
		Amount (million yen)
Education and Research Costs		39,569
Hospital Expenditures		29,710
Facilities Improvement Costs		2,781
Costs for Grants and Cooperative Research, etc.		16,738
Others		4,742
Total		93,541

External Funding for Research and Education

FY 2011

	Number of Cases	Amount (thousand yen)
Grants-in-Aid for Scientific Research	2,459	7,182,061
Global COE Programs	7	1,336,711
Project for Establishing Core Universities for Internationalization (Global 30)	1	259,994
GP Grants from Government	8	611,980
Other Governmental Grants	232	4,316,236
Donations and Commissioned Research	3,821	11,030,137

*Data are based on the book closed and including numbers / amounts received as research partakers.



Highlights of Research and Education Programs

World Premier International Research Center Initiative (WPI)		
Year of Adoption	Center name	Center Director
2012	Institute of Transformative Bio-Molecules	Graduate School of Science Prof. ITAMI Kenichiro

Global COE Program			
Year	Field	Program Title	Program Leader
2009–2014	Interdisciplinary, Combined Fields, New Disciplines	From Earth System Science to Basic and Clinical Environmental Studies	Hydrospheric Atmospheric Research Center Prof. YASUNARI Tetsuzo

Program for Leading Graduate Schools		
Year of Adoption	Program Title	School
2011	Integrative Graduate Education and Research Program in Green Natural Sciences	<ul style="list-style-type: none"> Graduate School of Science Graduate School of Engineering Graduate School of Bioagricultural Sciences
2011	The Program for Cross-Border Legal Institution Design	<ul style="list-style-type: none"> Graduate School of Law
2012	PhD Professional: Gateway to Success in Frontier Asia	<ul style="list-style-type: none"> All Graduate Schools (except for Graduate School of Pharmaceutical Sciences)
2012	Leadership Development Program for Space Exploration and Research	<ul style="list-style-type: none"> Graduate School of Science Graduate School of Engineering



Re-Inventing Japan Project			
Year	Type	Program Title	School
2011–2016	CAMPUS Asia Support for the Formation of a Core Center	Training Human Resources for the Development of an Epistemic Community in Law and Political Science to Promote the Formation of “jus commune” in East Asia	<ul style="list-style-type: none"> Graduate School of Law / School of Law Center for Asian Legal Exchange
2011–2016	CAMPUS Asia Support for the Formation of a Core Center	A Cooperative Asian Education Gateway for a Sustainable Society: Expanding the Frontiers in Science and Technology of Chemistry and Material	<ul style="list-style-type: none"> Graduate School of Science Graduate School of Engineering
2011–2016	Establishment Aid for Cooperative Education with Universities in the USA etc.	Japan-US Advanced Collaborative Education Program	<ul style="list-style-type: none"> Graduate School of Engineering EcoTopia Science Institute
2012–2017	Support for the formation of Collaborative Programs with ASEAN Universities	Training a New Generation of Leaders in International Cooperation for the Development of the ASEAN Region	<ul style="list-style-type: none"> Graduate School of International Development Graduate School of Law / School of Law Center for Asian Legal Exchange Graduate School of Economics / School of Economics International Cooperation Center for Agricultural Education

Housing for International Researchers and Students



International Ohmeikan House



International Residence HIGASHIYAMA



Housing in Noyori Conference Hall

For International Researchers		
Name of the Housing	Facilities	Address
International Residence HIGASHIYAMA (on campus)	15 rooms for single persons / couples (34m ²) 2 rooms for families (51.84m ²)	Furo-cho, Chikusa-ku, Nagoya, 464-8601
Researchers Village HIGASHIYAMA (on campus)	2 rooms for families (76.45m ² /78.33m ²) 4 rooms for families (67.5m ²)	Furo-cho, Chikusa-ku, Nagoya, 464-8601
Researchers Village DAIKO (on campus)	14 rooms for single persons (28m ²)	1-1-20 Daiko Minami, Higashi-ku, Nagoya, 461-0047
Researchers Village YAKUMO	9 rooms for couples / families (53m ²)	28-1 Yakumo-cho, Showa-ku, Nagoya, 466-0823
Housing in Noyori Conference Hall (on campus)	3 rooms for single persons (50.98–54.15m ²) 5 rooms for couples (81.01–91.10m ²) 2 rooms for families (97.17m ² /107.35m ²)	1-1 Niza-cho, Chikusa-ku, Nagoya, 464-8601
Idaka-cho Residence	26 rooms for single persons (21.06–21.99m ²)	2-38 Kamenoi, Meito-ku, Nagoya, 465-0094

*We have some private housings outside campus.

For International Students		
Name of the Housing	Facilities	Address
Foreign Students House	49 rooms for single persons (12.5m ²) 5 rooms for couples (35m ²) 2 rooms for families (50m ²)	2-23 Tosei-cho, Showa-ku, Nagoya, 466-0026
International Residence HIGASHIYAMA (on campus)	95 rooms for single persons (16m ²) 25 rooms for couples (34m ²)	Furo-cho, Chikusa-ku, Nagoya, 464-8601
International Residence YAMATE	104 rooms for single persons (15m ²) 112 rooms for single persons (7m ²)	165 Takamine-cho, Showa-ku, Nagoya, 466-0811
International Ohmeikan House	292 rooms for single persons *Japanese students are also housed in this dormitory.	165 Takamine-cho, Showa-ku, Nagoya, 466-0811
Ishida Memorial International Residence MYOKEN	93 rooms for single persons (15.1m ²)	40 Myoken-cho, Showa-ku, Nagoya, 466-0814



Library Holdings

The University Library is composed of the Central Library, the Medical Library, and departmental libraries. As of April 1st, 2012, the Library holds 3,160,130 volumes of books in total, including 1,507,006 foreign books, as well as a large amount of electronic resources and audio visual collections.

In order to support students' learning experiences, the library established a space called “learning commons” where students can learn in groups through discussion and receive personal guidance for using electronic resources and software.

Our Partner Institutions

As of Oct. 1, 2012

Academic Exchange Agreements

- = Inter-University Agreement
- = Inter-School Agreement

Asia

BANGLADESH

- Bangladesh Agricultural University
- Bangladesh University of Engineering and Technology
- University of Dhaka
- SAARC Meteorological Research Centre

BHUTAN

- The Centre for Bhutan Studies

CAMBODIA

- Royal University of Law and Economics
- The Royal University of Agriculture
- Royal University of Phnom Penh

CHINA

- Nanjing University
- Central South University
- Jilin University
- Huazhong University of Science and Technology
- Beijing University of Technology
- Chinese Academy of Sciences, Purple Mountain Observatory
- Tsinghua University
- Chinese Academy of Sciences, National Astronomical Observatories
- China University of Political Science and Law
- East China Normal University
- Peking University
- Fudan University
- Xi'an Jiaotong University
- Chinese Academy of Social Sciences, Institute of Literature and Institute of Literature of National Minorities
- Zhejiang University
- China National School of Administration
- East China University of Political Science and Law
- Chinese Academy of Sciences, Institute of High Energy Physics
- Shanghai Jiao Tong University
- Tongji University
- Northeastern University
- Harbin Institute of Technology
- Beijing International Studies University
- Nanjing University of Aeronautics and Astronautics

- University of Science and Technology of China
- Jiangsu Provincial Academy of Social Sciences (JSASS)
- Chinese Academy of Sciences, Shanghai Institute of Organic Chemistry
- Chinese Academy of Sciences, Institute of Process Engineering
- Polar Research Institute of China
- Southwest Jiaotong University
- Beijing Institute of Technology
- Chinese Academy of Sciences, Research Center for Eco-Environmental Sciences
- Tianjin University
- Chinese Academy of Social Sciences, Institute of Population and Labor Economics
- University of International Business and Economics
- Chinese Academy of Sciences, Xinjiang Institute of Ecology and Geography
- Chinese Academy of Sciences, Shanghai Institute of Ceramics
- Hainan University
- The Chinese University of Hong Kong
- The University of Hong Kong
- The Hong Kong University of Science and Technology
- Renmin University of China
- Shenyang University of Technology
- Sun Yat-sen University, Lingnan College
- Ministry of Health, P.R.China, China-Japan Friendship Hospital
- Beijing Normal University
- Xiamen University
- Chinese Academy of Sciences, Institute of Theoretical Physics

INDIA

- University of Pune
- Tata Institute of Fundamental Research
- Indian Institute of Technology, Madras
- Indian Institute of Science, Bangalore
- Indian Institute of Technology, Delhi

INDONESIA

- Indonesian National Institute of Aeronautics and Space
- Gadjah Mada University
- The State University of Surabaya
- Universitas Padjadjaran
- Syiah Kuala University
- Diponegoro University
- Agency for the Assessment and Application of Technology (BPPT)
- Institut Teknologi Bandung

- University of Indonesia

REPUBLIC OF KOREA

- Korean Research Institute of Standards and Science, Astronomy Observatory
- Korea University
- Chungnam National University
- Mokpo National University
- Gyeongsang National University
- Korea Maritime University
- Ewha Womans University
- Korea Institute for Advanced Study
- Hanyang University
- Seoul National University
- Kyungnam University
- Sungkyunkwan University
- Korea Legislation Research Institute
- Pukyong National University
- Pusan National University
- Hankuk University of Foreign Studies
- Kyung Hee University
- Chonnam National University
- University of Seoul
- Yonsei University
- Chonbuk National University
- Korea Institute of Geoscience and Mineral Resources
- Kyungpook National University
- Institute of Sunchang Fermented Soybean Products
- Pohang University of Science and Technology

LAOS

- National University of Laos
- National Agriculture and Forestry Research Institute, Lao P.D.R.

MALAYSIA

- MARA University of Technology

MONGOLIA

- Health Sciences University of Mongolia
- National University of Mongolia
- Mineral Resources and Petroleum Authority of Mongolia
- National Legal Center of Mongolia
- Mongolian University of Sciences and Technology
- Mongolian Academy of Sciences, Institute of Geography
- Mongolian Academy of Sciences, Institute of Philosophy, Sociology and Law
- Institute of Meteorology, Hydrology and Environment, Mongolia

NEPAL

- Kathmandu University

PHILIPPINES

- University of the Philippines, Los Banõs
- University of the Philippines, Diliman

THAILAND

- Kasetsart University
- Chulalongkorn University
- Chulabhorn Research Institute/ Chulabhorn Graduate Institute
- King Mongkut's University of Technology North Bangkok

VIETNAM

- Vietnam Institute of State and Law
- Hanoi Law University
- Ho Chi Minh City University of Law
- Hanoi University of Technology
- Vietnamese Academy of Science and Technology, Ho Chi Minh City Institute of Resources Geography
- Vietnam National University, Ho Chi Minh City
- Foreign Trade University
- Vietnam National University, Hanoi

TAIWAN

- National Chengchi University
- National Taiwan Normal University
- Soochow University
- National Chung Cheng University
- National Taiwan University
- National Tsing Hua University
- Taiwan Ocean Research Institute
- National Chiao Tung University

Pacific

AUSTRALIA

- The University of Sydney
- Flinders University
- University of South Australia
- The University of Adelaide
- Monash University
- The University of Melbourne
- The Australian National University
- Commonwealth Scientific and Industrial Research Organisation

NEW ZEALAND

- National Institute of Water and Atmospheric Research
- University of Auckland
- University of Canterbury

Europe

ARMENIA

- Yerevan Physics Institute

AUSTRIA

- Johannes Kepler University Linz
- The Medical University of Vienna

BULGARIA

- Sofia University
- Bulgarian Academy of Sciences, Space Research Institute, Space Astronomy Division
- Bulgarian Academy of Sciences, Institute of Electronics
- Bulgarian Academy of Sciences, Institute of Mathematics

DENMARK

- University of Copenhagen

FINLAND

- Finnish Meteorological Institute

FRANCE

- Université Stendhal (Université de Grenoble 3)
- Université de Paris-Sorbonne, Paris 4
- Ecole Nationale des Ponts et Chaussées (ENPC)
- Université Jean Moulin-Lyon 3
- Université Paris Diderot - Paris 7
- Université Joseph Fourier (Université de Grenoble 1)
- Université Pierre-Mendès-France (Université de Grenoble 2)
- Grenoble Institute of Technology (Université de Grenoble 4)
- Université de Strasbourg
- Université Panthéon Assas, Paris 2
- Université Paul Cézanne, Aix-Marseille 3
- Université Paris-Est
- Ecole Normale Supérieure de Lyon
- Université de Provence, Aix-Marseille 1
- École Nationale Supérieure d'Architecture Paris Val-de-Seine
- Université de Technologie de Belfort-Montbéliard

GERMANY

- Albert-Ludwigs-Universität Freiburg
- Technische Universität Carolo-Wilhelmina zu Braunschweig
- Universität zu Köln
- Technische Universität München
- Johannes Gutenberg-Universität Mainz
- Deutsches Zentrum für Luft- und Raumfahrt
- Universität Ulm
- Technische Universität Chemnitz
- RWTH Aachen University
- Universität Regensburg
- WWU Münster
- Ruhr-Universität Bochum
- Technische Universität Kaiserslautern
- Freie Universität Berlin
- Wissenschaftszentrum Ost- und Südosteuropa Regensburg
- Technische Universität Darmstadt
- University of Duisburg-Essen

HUNGARY

- Hungarian Academy of Sciences, Institute for Legal Studies

ITALY

- National Institute of Nuclear Physics (INFN)
- University of Catania
- University of Bologna

KAZAKHSTAN

- Kazakh Humanitarian Law University
- Legislation Research Institute, Republic of Kazakhstan

LATVIA

- Latvian State University

NETHERLANDS

- Wageningen University
- Free University of Amsterdam

NORWAY

- University of Oslo
- University of Tromsø

POLAND

- Medical University of Gdańsk
- Warsaw University of Technology
- University of Warsaw
- Polish Academy of Sciences, Institute of Geological Sciences, Krakow Research Centre

RUSSIA

- Institute of Theoretical and Experimental Physics
- Ministry of Health of Russia, Institute of Biomedical Problems
- Lomonosov Moscow State University
- Russian Academy of Sciences, Siberian Division, Institute of Cytology and Genetics
- Moscow State Engineering and Physics Institute (Technical University-MEPH)
- Russian Academy of Sciences, Institute of Computer Aided Design
- Russian Academy of Sciences, Far Eastern Branch, Institute of Cosmophysical Research and Radiowave Propagation (IKIR)
- Russian Academy of Sciences, Siberian Division, Institute of Solar-Terrestrial Physics (ISTP)

SPAIN

- University of Barcelona

SWEDEN

- Swedish Institute of Space Physics
- University of Lund
- Uppsala University
- Royal Institute of Technology
- SAFER - Vehicle and Traffic Safety Centre at Chalmers

SWITZERLAND

- University of Bern
- University of Geneva

U.K.

- The University of Sheffield
- The University of Warwick
- The University of Nottingham
- University of East Anglia
- The University of Manchester
- University of Bristol
- University of Leicester
- The University of Oxford
- University of London, School of Oriental and African Studies (SOAS)

UKRAINE

- Ukrainian SSR Academy of Sciences, Institute of Theoretical Physics

UZBEKISTAN

- Samarkand State University
- University of World Economy and Diplomacy
- Tashkent State Institute of Law

North America

CANADA

- Carleton University
- The University of Toronto
- University of Victoria
- York University
- University of Ottawa
- Université de Montréal

USA

- Oberlin College
- University of Michigan
- University of California, Los Angeles
- University of Houston
- North Carolina State University
- Harvard-Yenching Institute
- University of Cincinnati
- University of California, Berkeley
- The University of North Carolina at Chapel Hill
- University of Alaska Fairbanks
- National Oceanic and Atmospheric Administration
- Massachusetts Institute of Technology, Haystack Observatory
- Harvard Medical School
- Tulane University
- University of Pennsylvania
- University of California, San Diego
- Colorado School of Mines
- St. Olaf College
- Southern Illinois University, Carbondale
- University of Illinois at Urbana-Champaign
- University of Kentucky

- Duke University
- Johns Hopkins University
- University of Wisconsin Law School
- University of Maryland
- University of Washington
- Northwestern University
- The University of Texas
- The University of Chicago
- Green Mountain College
- Michigan State University
- UC Santa Barbara
- University of Minnesota
- University of Pittsburgh
- University of California, Davis

Latin America and the Caribbean

ARGENTINA

- National University of Rosario
- Luis F. Leloir, Campomar Foundation, The Research Institute of Biochemistry

BOLIVIA

- Universidad Mayor de San Andres, La Paz

BRAZIL

- Ministry of Science and Technology, National Institute for Space Research
- Fundacao Joaquim Nabuco
- Universidade de Brasilia - UnB
- Universidade de São Paulo

GUATEMALA

- Del Valle de Guatemala University

MEXICO

- Universidad de Sonora

Middle East

TURKEY

- Bilkent University
- Istanbul Technical University

Africa

EGYPT

- Tanta University
- Cairo University

GHANA

- University of Ghana

KENYA

- African Institute for Capacity Development (AICAD)

SOUTH AFRICA

- South African Astronomical Observatory

Others (International Organization)

- Southeast Asian Regional Center for Graduate Study and Research in Agriculture (SEARCA)
- European Organization for Nuclear Research (CERN)

Agreements for Industry-University Collaboration

Europe

U.K.

- The University of Warwick

North America

USA

- North Carolina State University

Agreements for International Joint Research

Asia

REPUBLIC OF KOREA

- Sungkyunkwan University

Pacific

AUSTRALIA

- The University of New South Wales

Europe

GERMANY

- Ruhr-Universität Bochum

North America

USA

- The University of Texas at Dallas

Others (International Organization)

- The Ministry of Science and Technology of Brazil
- The National Institute of Space Research (INPE)
- The Japan Aerospace Exploration Agency (JAXA), Institute of Space and Astronautical Science (ISAS)

International Networks

- Academic Consortium 21 (AC21)
- International Forum of Public Universities (IFPU)
- Collège doctoral franco-japonais
- University Mobility in Asia and the Pacific (UMAP)
- OpenCourseWare Consortium
- The G8 University Summit
- Canada-Japan Strategic Student Exchange Program



Overseas Research and Education Bases

- Shanghai Liaison Office (China)
- Uzbekistan Office (Tashkent, Uzbekistan)
- European Center (Freiburg, Germany)
- Technology Partnership, Inc. (North Carolina, USA)
- Research and Education Centers for Japanese Law (Uzbekistan, Mongolia, Vietnam, Cambodia)
- Field Research Center (Ulaanbaatar, Mongolia)



Shanghai Liaison Office (Shanghai, China)



Uzbekistan Office (Tashkent, Uzbekistan)



European Center (Freiburg, Germany)



Technology Partnership, Inc. (North Carolina, USA)



Research and Education Center for Japanese Law (Tashkent, Uzbekistan)



Research and Education Center for Japanese Law (Ulaanbaatar, Mongolia)



Research and Education Center for Japanese Law (Hanoi, Vietnam)



Research and Education Center for Japanese Law (Ho Chi Minh, Vietnam)



Research and Education Center for Japanese Law (Phnom Penh, Cambodia)



Field Research Center (Ulaanbaatar, Mongolia)

International Exchange

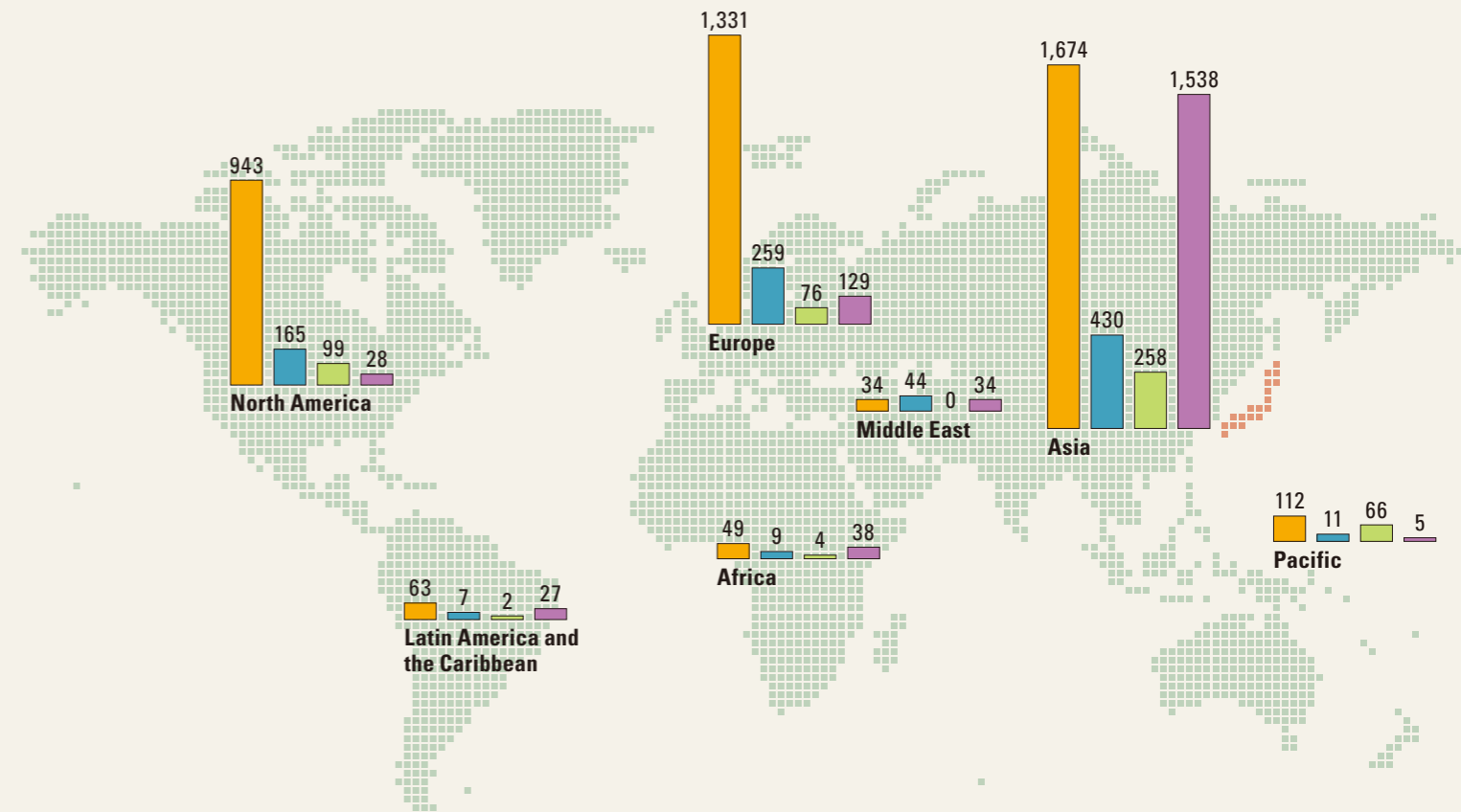
International Students by Country / Region

Region	Country	Count
Asia	Bangladesh	32
	Bhutan	2
	Cambodia	45
	China	929
	India	13
	Indonesia	64
	Republic of Korea	172
	Laos	18
	Malaysia	52
	Mongolia	21
	Myanmar	19
	Nepal	13
	Pakistan	1
	Philippines	28
	Singapore	5
	Sri Lanka	5
	Taiwan	49
	Thailand	23
Vietnam	47	
Subtotal	1,538	
Pacific	Australia	3
	New Zealand	1
	Papua New Guinea	1
Subtotal	5	
Europe	Albania	1
	Armenia	1
	Austria	2
	Azerbaijan	1
	Bulgaria	2
	Croatia	1
	Denmark	3
	Finland	1
	France	16
	Germany	15

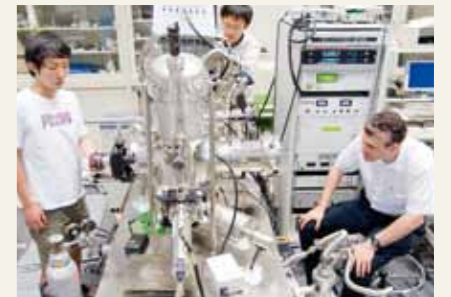
North America	Greece	1
	Hungary	3
	Italy	3
	Kazakhstan	3
	Kyrgyz Republic	2
	Netherlands	1
	Poland	6
	Romania	3
	Russia	8
	Serbia	1
	Slovak Republic	1
	Sweden	5
	Switzerland	3
	Tajikistan	1
	U.K.	8
	Ukraine	2
	Uzbekistan	35
	Subtotal	129
North America	Canada	7
	USA	21
Subtotal	28	
Latin America and the Caribbean	Argentina	1
	Bolivia	3
	Brazil	10
	Ecuador	1
	Guatemala	1
	Honduras	2
	Mexico	3
	Panama	1
	Paraguay	1
	Peru	2
	Venezuela	2
Subtotal	27	

As of November 1, 2012

Middle East	Afghanistan	8
	Iran	5
	Iraq	2
	Israel	2
	Palestinian National Authority	1
	Saudi Arabia	1
	Syria	2
	Turkey	12
	Yemen	1
	Subtotal	34
	Africa	Cameroon
The Democratic Republic of the Congo		2
Egypt		8
Eritrea		1
Ethiopia		3
Ghana		2
Kenya		7
Madagascar		2
Malawi		2
Mozambique		2
Nigeria		2
Senegal		1
Tanzania		1
Tunisia		1
Zambia		1
Zimbabwe		1
Subtotal		38
Total (87 Countries / Regions)	1,799	



■ Researchers Going Abroad by Area / Total: 4,206 (FY 2011)
■ International Researchers by Area / Total: 925 (FY 2011)
■ Students Going Abroad by Area / Total: 505 (FY 2011)
■ International Students by Area / Total: 1,799 (As of November 1, 2012)



International Students by School

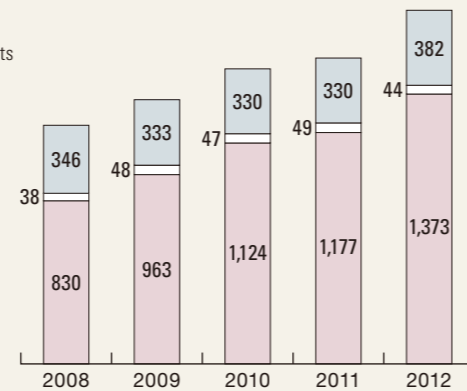
As of November 1, 2012

School / Graduate School	Count
Letters	162
Education	77
Law	172
Economics	130
Informatics and Sciences	22
Science	73
Medicine	120
Engineering	402
Agricultural Sciences	60
International Development	180
Mathematics	11
Languages and Cultures	148
Environmental Studies	123
Information Science	61
Pharmaceutical Sciences	1
Education Center for International Students	52
Others	5
Total	1,799

International Students by Funding Source

	2008	2009	2010	2011	2012
Government Sponsored	346	333	330	330	382
Sponsored by Foreign Governments	38	48	47	49	44
Self-Supporting	830	963	1,124	1,177	1,373
Total	1,214	1,344	1,501	1,556	1,799

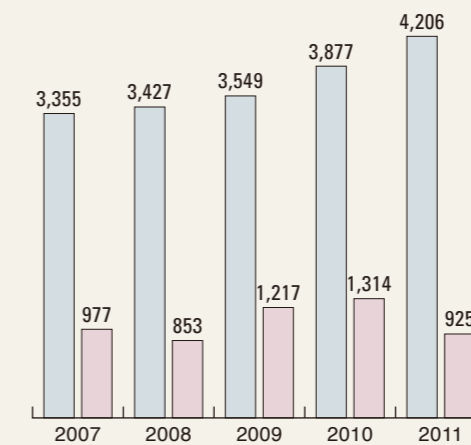
■ Government Sponsored
■ Sponsored by Foreign Governments
■ Self-Supporting



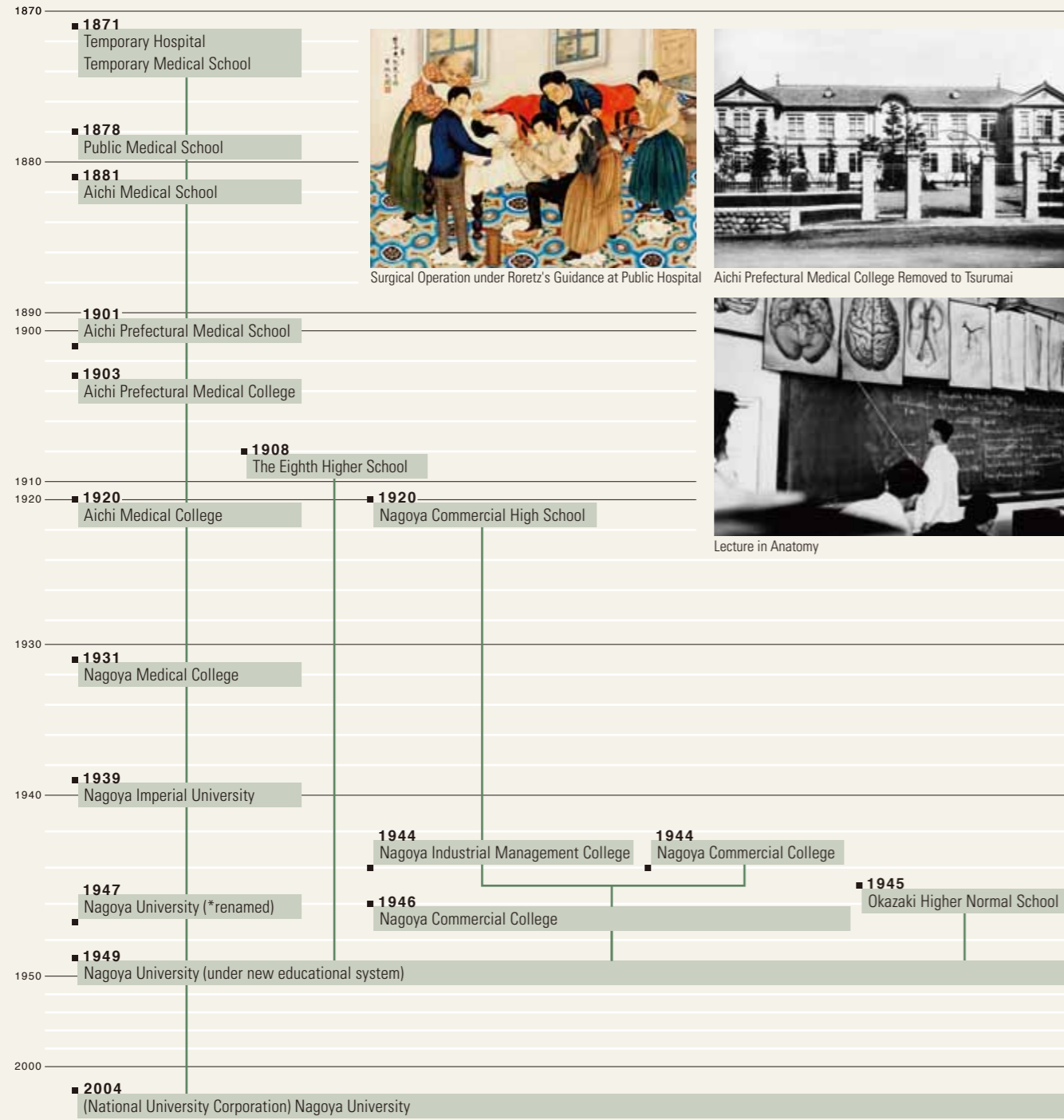
Trends of Staff Exchange

	2007	2008	2009	2010	2011
Researchers Going Abroad	3,355	3,427	3,549	3,877	4,206
International Researchers	977	853	1,217	1,314	925

■ Researchers Going Abroad
■ International Researchers



Historical Chart



Surgical Operation under Roretz's Guidance at Public Hospital



Aichi Prefectural Medical College Removed to Tsurumai



Lecture in Anatomy

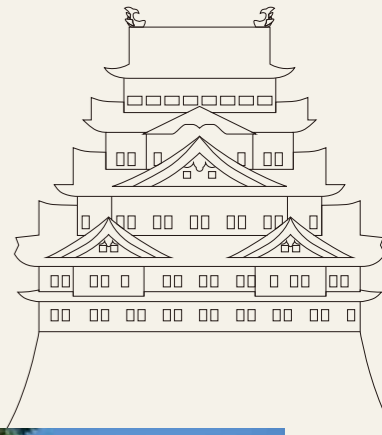
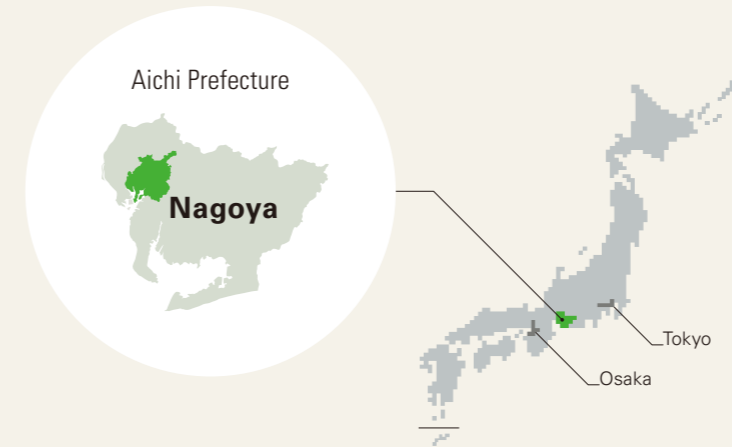


Toyoda Auditorium (around 1960)



Toyoda Auditorium (2010)

The City of Nagoya



- ✓ Nagoya City is one of the top-ranking economies worldwide, boasting leading industries in automotive manufacturing, machinery, electronics and ceramics.
- ✓ The Chubu area of Japan is particularly renowned as the home of Oda Nobunaga, Toyotomi Hideyoshi and Tokugawa Ieyasu, three leaders who unified Japan over 400 years ago, bringing an end to the "Period of Warring States."
- ✓ Nagoya Castle, originally built by Tokugawa Ieyasu and famous for the golden dolphins found on its donjon, serves as the landmark of the region.



JR Central Towers



Nagoya Castle



Nagoya Noh Theater



Arimatsu Shibori Matsuri (festival)



Nagoya City Archives



The Golden Dolphin



Nagoya Congress Center



Nagoya Port Triton



Nagoya City Art Museum



OASIS 21