

# 名古屋大学

Through excellence in its education and research,  
Nagoya University aspires to become one of the world's  
leading universities.



## NAGOYA UNIVERSITY FACTBOOK

2016



- 01 Organizational Structure
- 02 Schools (Undergraduate Courses)
- 03 Graduate Schools (Graduate Courses)
- 06 Staff  
Student Enrollment
- 07 Degrees Conferred  
Financial Outline
- 08 Highlights of Research and Education Programs
- 09 Housing for International Researchers and Students  
Library Holdings
- 10 Our Partner Institutions
- 14 International Exchange
- 16 Historical Chart
- 17 The City of Nagoya

# Organizational Structure



## Schools (Undergraduate Courses)

Schools	Departments	Courses / Programs	
School of Letters	Department of Humanities	<ul style="list-style-type: none"> <li>Philosophy and Civilization Theory Courses</li> <li>History and Cultural History Courses</li> <li>Literature and Linguistics Courses</li> <li>Environmental and Behavioral Science Courses</li> </ul>	
School of Education	Department of Human Developmental Sciences	<ul style="list-style-type: none"> <li>Lifelong Education and Development Course</li> <li>School Education and Information Science Course</li> <li>International Education and Culture Course</li> <li>Human Psychology Course</li> <li>Counseling and Psychotherapy Course</li> </ul>	
School of Law	Department of Law and Political Science	<ul style="list-style-type: none"> <li>Fundamental Positive Law</li> <li>Fundamental Political Science</li> <li>Comtemporary Legal Disciplines</li> <li>Dispute Settlement Law</li> <li>Business Economics Law</li> <li>Public Policy</li> <li>International Relations</li> <li>Legal and Administrative Informatics</li> </ul>	
School of Economics	Department of Economics	<ul style="list-style-type: none"> <li>Theoretical Economics</li> <li>Applied Economics</li> </ul>	
	Department of Business Administration	<ul style="list-style-type: none"> <li>Corporate Management</li> <li>Information Accounting</li> </ul>	
School of Informatics and Sciences	Department of Natural Science Informatics	<ul style="list-style-type: none"> <li>Complex Systems and Informatics</li> <li>Mathematical Sciences and Informatics</li> <li>Environmental Science of Earth and Materials</li> </ul>	
	Department of Social and Human Science Informatics	<ul style="list-style-type: none"> <li>Juristic and Economic Studies of Environments</li> <li>Sociological-Geographical Studies of Environment</li> <li>Psychology</li> <li>Society and Media Studies</li> </ul>	
School of Science	Department of Mathematics	<ul style="list-style-type: none"> <li>Mathematics</li> </ul>	
	Department of Physics	<ul style="list-style-type: none"> <li>Physics</li> </ul>	
	Department of Chemistry	<ul style="list-style-type: none"> <li>Chemistry</li> </ul>	
	Department of Biological Science	<ul style="list-style-type: none"> <li>Biological Science</li> </ul>	
	Department of Earth and Planetary Sciences	<ul style="list-style-type: none"> <li>Earth and Planetary Sciences</li> </ul>	
School of Medicine	Department of Medicine		<ul style="list-style-type: none"> <li>Anatomy</li> <li>Physiology</li> <li>Biochemistry</li> <li>Pathology</li> <li>Microbiology</li> <li>Medical Zoology</li> <li>Immunology</li> <li>Legal Medicine</li> <li>Hygiene</li> <li>Public Health</li> <li>Preventive Medicine</li> <li>Internal Medicine, Neurology</li> <li>Surgery, Thoracic Surgery</li> <li>Orthopedic Surgery</li> <li>Obstetrics and Gynecology</li> <li>Ophthalmology</li> <li>Psychiatry</li> <li>Pediatrics</li> <li>Dermatology</li> <li>Urology</li> <li>Otorhinolaryngology</li> <li>Radiology Medicine</li> <li>Anesthesiology</li> <li>Oral and Maxillofacial Surgery</li> <li>Neurosurgery</li> <li>Geriatrics</li> <li>Emergency Medicine</li> <li>Clinical Laboratory Medicine</li> </ul>
	Department of Health Sciences	Department of Nursing	<ul style="list-style-type: none"> <li>Nursing</li> </ul>
		Department of Radiological Technology	<ul style="list-style-type: none"> <li>Radiological Technology</li> </ul>
		Department of Medical Technology	<ul style="list-style-type: none"> <li>Medical Technology</li> </ul>
		Department of Physical Therapy	<ul style="list-style-type: none"> <li>Physical Therapy</li> </ul>
		Department of Occupational Therapy	<ul style="list-style-type: none"> <li>Occupational Therapy</li> </ul>
School of Engineering	Department of Chemical and Biological Engineering	<ul style="list-style-type: none"> <li>Applied Chemistry Course</li> <li>Chemical Engineering Course</li> <li>Biotechnology Course</li> </ul>	
	Department of Physical Science and Engineering	<ul style="list-style-type: none"> <li>Materials Engineering Course</li> <li>Applied Physics Course</li> <li>Quantum Science and Energy Engineering Course</li> </ul>	
	Department of Electrical and Electronic Engineering and Information Engineering	<ul style="list-style-type: none"> <li>Electrical and Electronic Engineering Course</li> <li>Information Engineering Course</li> </ul>	
	Department of Mechanical and Aerospace Engineering	<ul style="list-style-type: none"> <li>Mechanical Engineering Course</li> <li>Electronic-Mechanical Engineering Course</li> <li>Aerospace Engineering Course</li> </ul>	
	Department of Civil Engineering and Architecture	<ul style="list-style-type: none"> <li>Civil Engineering Course</li> <li>Architecture Course</li> </ul>	
School of Agricultural Sciences	Department of Bioenvironmental Sciences	<ul style="list-style-type: none"> <li>Bioenvironmental Sciences</li> </ul>	
	Department of Bioresource Sciences	<ul style="list-style-type: none"> <li>Bioresource Sciences</li> </ul>	
	Department of Applied Biosciences	<ul style="list-style-type: none"> <li>Applied Biosciences</li> </ul>	

\*English names for the above departments, courses and programs are tentative.

## Global 30 International Programs (Undergraduate)

Programs	Affiliated Schools
Automotive Engineering Program	<ul style="list-style-type: none"> <li>School of Engineering</li> </ul>
Fundamental and Applied Physics Program	<ul style="list-style-type: none"> <li>School of Engineering</li> <li>School of Science</li> </ul>
Chemistry Program	<ul style="list-style-type: none"> <li>School of Science</li> <li>School of Engineering</li> </ul>
Biological Science Program	<ul style="list-style-type: none"> <li>School of Science</li> <li>School of Agricultural Sciences</li> </ul>
Program in Social Sciences	<ul style="list-style-type: none"> <li>School of Law</li> <li>School of Economics</li> </ul>
Japan-in-Asia Cultural Studies Program	<ul style="list-style-type: none"> <li>School of Letters</li> </ul>

## Graduate Schools (Graduate Courses)

Graduate Schools	Departments	Courses / Fields		
Graduate School of Letters	Department of Humanities	<ul style="list-style-type: none"> <li>Comparative Studies of Humanities</li> <li>Japanese Culture</li> <li>Philosophy</li> <li>Linguistics</li> <li>Eastern Studies</li> <li>Japanese History</li> <li>Oriental History</li> <li>World History</li> <li>Art History and Archaeology</li> <li>Japanese Literature and Linguistics</li> <li>Western Literature and Linguistics</li> </ul>		
Graduate School of Education and Human Development	Department of Educational Sciences	<ul style="list-style-type: none"> <li>Lifelong Education and Development</li> <li>School Education and Information Sciences</li> <li>Foundations of Education and Human Development</li> <li>Higher Education</li> <li>Sports Science for Lifelong Physical Activity</li> </ul>		
	Department of Psychology and Human Developmental Sciences	<ul style="list-style-type: none"> <li>Psychological Sciences</li> <li>Human Development and Clinical Psychology</li> <li>Sports Behavioral Sciences</li> </ul>		
Graduate School of Law	Department of the Combined Graduate Program in Law and Political Science	<ul style="list-style-type: none"> <li>Core Law and Political Science</li> <li>Contemporary Legal Systems</li> <li>International Comparative Law and Political Science</li> <li>Asian Law and Political Science</li> </ul>		
	JD Program for Legal Practice (Nagoya University Law School)	<ul style="list-style-type: none"> <li>Core Law</li> <li>Applied Contemporary Law</li> </ul>		
Graduate School of Economics	Department of Socio-Economic Systems	<ul style="list-style-type: none"> <li>Analysis on Markets and Institutions</li> <li>Socio-Economic Analysis</li> <li>Analysis on the System of Policy Making</li> <li>Socio-Environmental System</li> </ul>		
	Department of Industrial Management Systems	<ul style="list-style-type: none"> <li>Corporate System</li> <li>Management Innovation</li> <li>Creation of Information</li> </ul>		
Graduate School of Science	Division of Particle and Astrophysical Sciences	<ul style="list-style-type: none"> <li>Fundamental Theoretical Physics</li> <li>Cosmology and Astrophysics</li> <li>Interstellar Physics</li> <li>Elementary Particle Physics</li> <li>Hadron Physics</li> <li>Atomic Physics</li> <li>Solar-Terrestrial Relationships</li> <li>Physical Processes in Solar-Terrestrial Environment</li> <li>Chemical Processes in Solar-Terrestrial Environment</li> <li>Theoretical Studies for Particle and Astrophysics</li> <li>Experimental Studies for Particle and Astrophysics</li> </ul>		
	Division of Material Science	<ul style="list-style-type: none"> <li>Interdisciplinary Chemical Sciences</li> <li>Molecular Biophysics</li> <li>Inorganic and Analytical Chemistry</li> <li>Organic Chemistry and Biochemistry</li> <li>Physical Chemistry</li> <li>Biophysics</li> <li>Fundamental Condensed Matter Physics</li> <li>Solid State Physics</li> <li>Applied Condensed Matter Physics</li> <li>Materials Science</li> </ul>		
	Division of Biological Science	<ul style="list-style-type: none"> <li>Biomolecular Architecture</li> <li>Molecular Genetics</li> <li>Molecular Information and Cellular Regulation</li> <li>Developmental Biology</li> <li>Genetic Mechanism</li> <li>Supramolecular Biology</li> <li>Cell Regulation</li> <li>Biological Systems</li> <li>Environmental Biology</li> <li>Gene Analysis</li> <li>Genomics and Clock Bio-nanomachine</li> <li>Reproduction and Genetics</li> </ul>		
Graduate School of Medicine	Doctor of Medical Science	Program in Integrated Medicine	Division of Basic Medicine	<ul style="list-style-type: none"> <li>Biological Chemistry</li> <li>Microbiology and Immunology</li> <li>Advanced Medical Science</li> <li>Laboratory Animal Science</li> <li>Aging Research</li> <li>AIDS Research</li> <li>Cell Science</li> <li>Neuroscience</li> <li>Oncology</li> <li>Higher Nervous Control</li> <li>Regulation of Organ Function</li> <li>Molecular and Cellular Adaptation</li> <li>Neurochemistry</li> <li>Anatomy and Cell Biology</li> <li>Pathology</li> <li>Development</li> <li>Cancer Genetics</li> <li>Social Life Science</li> <li>Health Promotion Medicine</li> <li>Epidemiology</li> </ul>
			Division of Clinical Medicine	<ul style="list-style-type: none"> <li>Internal Medicine</li> <li>High-Technology Application of Medicine</li> <li>Clinical Neurosciences</li> <li>Head and Neck and Sensory Organ Medicine</li> <li>Surgery</li> <li>Musculoskeletal and Cutaneous Medicine</li> <li>Biomedical Regulation</li> <li>Clinical Management Medicine</li> <li>Medicine in Growth and Aging</li> <li>Maternal and Perinatal Care</li> <li>Psychiatry for Parents and Children</li> <li>Comprehensive Ambulatory Medicine</li> </ul>
			Division of Clinical Pharmacology	<ul style="list-style-type: none"> <li>Molecule Pharmacology</li> <li>Clinical Pharmacology</li> <li>Pharmaceutical R&amp;D</li> <li>Pharmaceutical Management</li> </ul>
	Master's Course	Program in Medical Science	<ul style="list-style-type: none"> <li>Program in Medical Science, Healthcare Administration Course</li> </ul>	<ul style="list-style-type: none"> <li>※ YLP-not open for general admission</li> </ul>



Graduate Schools	Departments	Courses / Fields
Graduate School of Medicine	Program in Nursing	• Fundamentals and Clinical Nursing • Nursing for Developmental Health
	Program in Radiological and Medical Laboratory Sciences	• Radiological Sciences • Pathophysiological Laboratory Sciences • Brain and Mind Sciences
	Program in Physical and Occupational Therapy	• Physical Therapy • Occupational Therapy
Graduate School of Engineering	Department of Applied Chemistry, Chemical Engineering and Biotechnology	• Physical Chemistry • Organic Chemistry • Inorganic and Analytical Chemistry • Materials Processing Engineering • Chemical Systems Engineering • Biotechnology • Biomaterials • Energy and Environmental Chemistry • Energy Process and Ecomaterials
	Department of Materials, Physics and Energy Engineering	• Materials Processing • Bioinspired Materials • Structural Materials and Processing • Ecological Materials • Information and Electronic Materials • Materials Characterization • Quantum Physics and Engineering • Structural Physics • Soft and Solid Matter Physics • Energy Related Materials Engineering • Quantum and Energy System Engineering • Energy Quantum Beam and Materials Engineering • Energy Safety Engineering • EcoTopia-oriented Materials Engineering • Ecological Electronic Device Engineering • Energy System Materials and Recycling Engineering
	Department of Electrical Engineering and Computer Science	• Power Engineering and Systems • Advanced Energy Science • Materials and Device Processing • Solid State Devices • Quantum Devices • Communication and Control Systems • Computer Engineering • Information Systems • Space Electromagnetic Environment • Environment-friendly Electric Power System • Electron Beam Applications and Electronic Nanodevices • Communication Systems
	Department of Mechanical Science and Engineering	• Advanced Materials and Manufacturing • Thermo-Fluids and Environmental Engineering • Biomechanics and Human-Machine Systems • Micro-Nano Mechanical Systems • Mechatronics Design • Sensing and Control • Mechanical Engineering for Sustainable Society • Human Centered Design
	Department of Aerospace Engineering	• Aerodynamics and Propulsion • Structure and Control • Environmental Thermo-Fluid Systems • Composite Engineering Laboratory • Aerospace Vehicle Design Engineering
	Department of Civil Engineering	• Structural Engineering and Materials • River and Maritime Engineering • Soil Mechanics and Geotechnical Engineering • Infrastructure Systems Planning and Management • Environment Cohabitation and Ecological System
	Department of Crystalline Materials Science	• Nano-Structured Device Engineering • Condensed Matter and Material Physics • Nano-Structured Solid Chemistry • Engineering for Control of Nano-Structures
	Department of Energy Engineering and Science	• Energy Materials and Device Engineering • Thermal Energy System Engineering • Energy Environmental Safety Engineering • Plasma Energy Engineering and Science
	Department of Quantum Engineering	• Quantum Nanostructure Analysis • Quantum Beam Engineering • Quantum Nanoelectronics
	Department of Micro-Nano Systems Engineering	• Bio-Robotics • Integrated Mechatronics Devices • Micro-Nano Mechanical Science
	Department of Molecular Design and Engineering	• Organic Materials Design and Engineering • Materials Analysis and Engineering • Inorganic Materials Design and Engineering
	Department of Computational Science and Engineering	• Fundamental Computational Science and Engineering • Applied Computational Science and Engineering
	Graduate School of Bioagricultural Sciences	Department of Biosphere Resources Science
Department of Biological Mechanisms and Functions		• Division of Biodynamics • Division of Molecular and Cellular Biology • Division of Biofunctions Development • Division of Bioresource Functions
Department of Applied Molecular Biosciences		• Division of Biomodeling • Division of Biofunctional Chemistry • Division of Applied Biochemistry • Division of Applied Genetics and Physiology
Department of Bioengineering Sciences		• Division of Biotechnology • Division of Socioeconomic Science of Bioagriculture • Division of Plant and Animal Production • Division of Plant Genomics • Division of Molecular Cell Function • Division of International Cooperation in Agricultural Sciences
Graduate School of International Development	Department of International Development	• International Development • Development Policy • Managerial Economics of Development • Education and Human Development
	Department of International Cooperation Studies	• International Cooperation • Comparative Study of Legal and Political Systems • International Cultural Cooperation
	Department of International Communication	• International Communication • Linguistic Information Systems • Language Education Sciences • International Languages and Cultures • Communication Sciences
Graduate School of Mathematics	Division of Mathematics	• Fundamental Mathematics • Natural Mathematics • Social Mathematics • Computational Mathematics • Advanced Topology

Graduate Schools	Departments	Courses / Fields
Graduate School of Languages and Cultures	Department of Japanese Language and Culture	• Japanese Language and Cultural Studies • Teaching Japanese as a Foreign Language • Applied Linguistics • Comparative Culture • Japanese Linguistics • Japanese Language Teaching Methodology
	Department of Multicultural Studies	• Multicultural Studies • Contemporary Arts and Cultural Studies • American Studies • East Asian Studies • European Studies • Gender Studies • Media Professional Studies
Graduate School of Environmental Studies	Department of Earth and Environmental Sciences	• Global Environmental Variation • Earth Environmental Systems • Climate Science • Global Geochemistry • Geology and Geobiology • Geochemistry and Cosmochemistry • Earth and Planetary Physics • Earth and Planetary Dynamics • Chronology and Natural History • Radiation and Life Sciences • Global Water Cycle
	Department of Environmental Engineering and Architecture	• Sustainable Urban Development • Environmental and Safety Management • Functional Materials and Environment • Material-Systems Science in Environment • Environmental Systems and Planning • Land, Infrastructure and Transportation Management • Architectural and Environmental Design • Building Structure and Construction Systems
	Department of Social and Human Environment	• Environmental Policies • Economic Environment • Law and Politics • Sociology • Psychology • Geography
Graduate School of Information Science	Department of Computer Science and Mathematical Informatics	• Mathematical Informatics • Mathematical Modeling and Analysis • Theory of Computation
	Department of Information Engineering	• Integrated Circuits and Systems • Software Science and Technology • Information Network Systems
	Department of Media Science	• Speech and Image Science • Intelligent Media Engineering • Cognitive Informatics • Architecture for Information Media Space
	Department of Complex Systems Science	• Many-body Systems Science • Materials Informatics • Life-Science Informatics • Emergent Systems • Complex Systems Computation • Information Visualization
	Department of Systems and Social Informatics	• Knowledge Society and Information Systems • Designing of Electronic Media and Society • Philosophy of Information • Architecture of Information Society
Graduate School of Pharmaceutical Sciences	Department of Basic Medicinal Sciences	• Organic Chemistry • Bioscience • Structural Biology

\*English names for the above departments, courses and fields are tentative.

## Global 30 International Programs (Graduate)

Programs	Affiliated Schools	Degree	
		Master's	Doctoral
Automotive Engineering Graduate Program	• Graduate School of Engineering	●	
Civil and Environmental Engineering Graduate Program	• Graduate School of Engineering	●	●
Physics and Mathematics Graduate Program	• Graduate School of Science • Graduate School of Mathematics	●	●
Chemistry Graduate Program	• Graduate School of Science • Graduate School of Engineering	●	●
Biological and Bioagricultural Sciences Graduate Program	• Graduate School of Science • Graduate School of Bioagricultural Sciences • Graduate School of Medicine	●	
Biological and Bioagricultural Sciences Graduate Program	• Graduate School of Science • Graduate School of Bioagricultural Sciences		●
Medical Science Graduate Program	• Graduate School of Medicine		●
Graduate Program in Comparative Studies of Language and Culture	• Graduate School of Languages and Cultures	●	
Graduate Program in Economics and Business Administration	• Graduate School of Economics	●	
Japan-in-Asia Cultural Studies Graduate Program	• Graduate School of Letters	●	

## Other International Programs (Graduate)

Programs	Affiliated Schools	Degree	
		Master's	Doctoral
International Development and Cooperation Course	• Graduate School of International Development	●	●
Department of the Combined Graduate Program in Law and Political Science LL. M. (Comparative Law) Program and LL.D.(Comparative Law)	• Graduate School of Law	●	●
Young Leaders' Program (YLP)	• Graduate School of Medicine	●	
Nagoya University Global Environmental Leaders Program (NUGELP)	• Graduate School of Environmental Studies • Graduate School of Engineering	●	●
Asian Professionals Doctoral Program	• Graduate School of Law		●



# Staff

As of May 1, 2015

Members of the Board of Trustees			
President		1	
Trustees		7	
Auditors		2	
Staff (Full-time)			
Faculty	Professors	652	(70)*1
	Associate Professors	488	(104)
	Associate Professors / Lecturers	112	(125)
	Assistant Professors	418	(335)
	Research Associates	7	
	Researchers	0	(204)
Specialist		2	(1)
School Teachers at Affiliated Schools		39	
Administrative / Technical Staff*2		2,088	(195)
<b>Total</b>		<b>3,806</b>	<b>(1,034)</b>

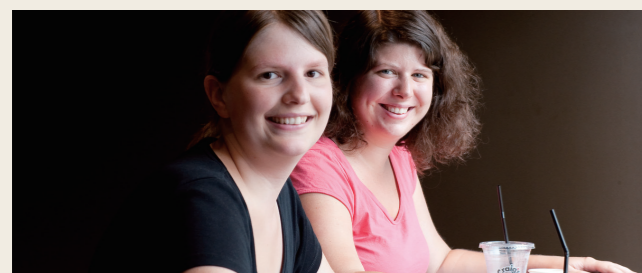
\*1 Data in parenthesis show the number of staff under limited-time contracts.  
\*2 Data include medical staff of the University Hospital.



# Student Enrollment

As of May 1, 2015

Name of Schools / Graduate Schools	Undergraduate Courses		Graduate Courses		Total
	Degree seeking	Non-degree seeking	Degree seeking	Non-degree seeking	
Letters	586	45	261	7	899
Education	321	21	237	17	596
Law	702	36	278	99	1,115
Economics	937	18	113	15	1,083
Informatics and Sciences	357	6	-	-	363
Science	1,226	17	592	8	1,843
Medicine	1,559	50	995	34	2,638
Engineering	3,453	42	1,613	20	5,128
Agricultural Sciences	752	1	419	3	1,175
International Development	-	-	288	11	299
Mathematics	-	-	147	3	150
Languages and Cultures	-	-	193	33	226
Environmental Studies	-	-	412	11	423
Information Science	-	-	348	11	359
Pharmaceutical Sciences	-	-	82	1	83
Human Informatics	-	-	1	-	1
International Education & Exchange Center	-	4	-	-	4
International Language Center	-	48	-	-	48
Research Institute of Environmental Medicine	-	2	-	-	2
Institute for Space-Earth Environmental Research	-	1	-	-	1
Research Center of Health, Physical Fitness and Sports	-	3	-	-	3
<b>Total</b>	<b>9,893</b>	<b>294</b>	<b>5,979</b>	<b>273</b>	<b>16,439</b>



# Degrees Conferred

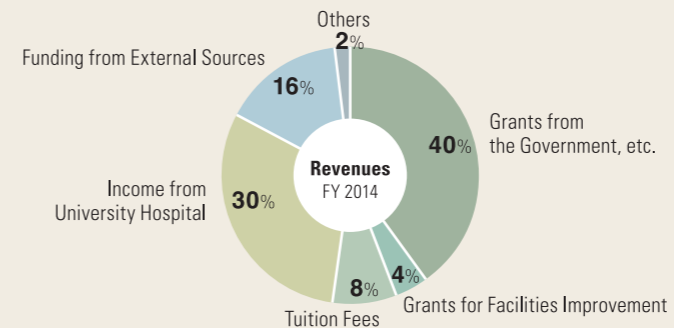
FY2014

Name of Schools / Graduate Schools	Bachelor's Degree	Master's Degree	Doctor's Degree	Professional Degree
Letters	150	59	21	-
Education	77	57	24	-
Law	150	48	11	72
Economics	240	32	10	-
Informatics and Sciences	94	-	-	-
Science	278	175	41	-
Medicine	335	82	167	-
Engineering	781	610	98	-
Agricultural Sciences	169	136	32	-
International Development	-	68	14	-
Mathematics	-	50	15	-
Languages and Cultures	-	47	8	-
Environmental Studies	-	135	31	-
Information Science	-	137	23	-
Pharmaceutical Sciences	-	29	-	-
Human Informatics	-	-	-	-
<b>Total</b>	<b>2,274</b>	<b>1,665</b>	<b>495</b>	<b>72</b>

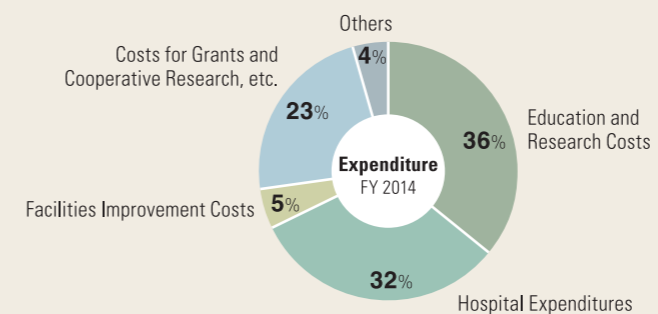


# Financial Outline

\*The following information was calculated in accordance with the National University Corporation Accounting Standards.



Item	Amount (million yen)
Grants from the Government, etc.	45,223
Grants for Facilities Improvement	4,806
Tuition Fees	8,960
Income from University Hospital	34,420
Funding from External Sources	17,274
Others	2,049
<b>Total</b>	<b>112,732</b>



Item	Amount (million yen)
Education and Research Costs	39,171
Hospital Expenditures	34,485
Facilities Improvement Costs	5,483
Costs for Grants and Cooperative Research, etc.	24,738
Others	4,663
<b>Total</b>	<b>108,540</b>

\*Each item includes Labor Costs, the total of which was 48,528 million yen.

# External Funding for Research and Education

FY 2014

Item	Number of Cases	Amount(thousand yen)
Grants-in-Aid for Scientific Research	2,757	7,843,474
Other Governmental Grants	181	10,378,902
Donations and Commissioned Research	4,640	13,480,944

\*Data based on the book closed and including numbers / amounts received as research partakers.





# Highlights of Research and Education Programs

Top Global University Project	
Adoption of Year	Program Title
2014	Asian Hub University contributing to a sustainable society in the 21st century

World Premier International Research Center Initiative (WPI)		
Adoption of Year	Center name	Center Director
2012	Institute of Transformative Bio-Molecules	Graduate School of Science Prof. ITAMI Kenichiro

Program for Leading Graduate Schools		
Adoption of Year	Program Title	School
2011	Integrative Graduate Education and Research Program in Green Natural Sciences	<ul style="list-style-type: none"> <li>Graduate School of Science</li> <li>Graduate School of Engineering</li> <li>Graduate School of Bioagricultural Sciences</li> </ul>
2011	The Program for Cross-Border Legal Institution Design	<ul style="list-style-type: none"> <li>Graduate School of Law</li> </ul>
2012	PhD Professional: Gateway to Success in Frontier Asia	<ul style="list-style-type: none"> <li>All Graduate Schools (except for Graduate School of Pharmaceutical Sciences)</li> </ul>
2012	Leadership Development Program for Space Exploration and Research	<ul style="list-style-type: none"> <li>Graduate School of Science</li> <li>Graduate School of Engineering</li> </ul>
2013	Graduate Program for Real-World Data Circulation Leaders	<ul style="list-style-type: none"> <li>Graduate School of Information Science</li> <li>Graduate School of Engineering</li> <li>Graduate School of Medicine</li> <li>Graduate School of Economics</li> </ul>
2013	Women Leaders Program to Promote Well-being in Asia	<ul style="list-style-type: none"> <li>Graduate School of International Development</li> <li>Graduate School of Education and Human Development</li> <li>Graduate School of Bioagricultural Sciences</li> <li>Graduate School of Medicine</li> </ul>



ITbM



NIC



Graduate School of Pharmaceutical Sciences

# Housing for International Researchers and Students



International Ohmeikan House



International Residence HIGASHIYAMA



Housing in Noyori Conference Hall

For International Researchers		
Name of the Housing	Facilities	Address
International Residence HIGASHIYAMA (on campus)	15 rooms for single persons / couples (34m <sup>2</sup> ) 2 rooms for families (51.84m <sup>2</sup> )	Furo-cho, Chikusa-ku, Nagoya, 464-8601
Researchers Village HIGASHIYAMA (on campus)	2 rooms for families (76.45m <sup>2</sup> /78.33m <sup>2</sup> ) 4 rooms for families (67.5m <sup>2</sup> )	Furo-cho, Chikusa-ku, Nagoya, 464-8601
Researchers Village DAIKO (on campus)	14 rooms for single persons (28m <sup>2</sup> )	1-1-20 Daiko Minami, Higashi-ku, Nagoya, 461-0047
Researchers Village YAKUMO	9 rooms for couples / families (53m <sup>2</sup> )	28 Yakumo-cho, Showa-ku, Nagoya, 466-0823
Housing in Noyori Conference Hall (on campus)	3 rooms for single persons (50.98–54.15m <sup>2</sup> ) 5 rooms for couples (81.01–91.10m <sup>2</sup> ) 2 rooms for families (97.17m <sup>2</sup> /107.35m <sup>2</sup> )	1-1 Niza-cho, Chikusa-ku, Nagoya, 464-0813
Idaka-cho Residence	26 rooms for single persons (21.06–21.99m <sup>2</sup> )	2-38 Kamenoi, Meito-ku, Nagoya, 465-0094

\*We have some private housings outside campus.

For International Students		
Name of the Housing	Facilities	Address
Foreign Students House	49 rooms for single persons (12.5m <sup>2</sup> ) 5 rooms for couples (35m <sup>2</sup> ) 2 rooms for families (50m <sup>2</sup> )	2-23 Tosei-cho, Showa-ku, Nagoya, 466-0026
International Residence HIGASHIYAMA (on campus)	95 rooms for single persons (16m <sup>2</sup> ) 25 rooms for couples (34m <sup>2</sup> )	Furo-cho, Chikusa-ku, Nagoya, 464-8601
International Residence YAMATE	104 rooms for single persons (15m <sup>2</sup> ) 112 rooms for single persons (7m <sup>2</sup> )	165 Takamine-cho, Showa-ku, Nagoya, 466-0811
International Ohmeikan House	292 rooms for single persons *Japanese students are also housed in this dormitory.	165 Takamine-cho, Showa-ku, Nagoya, 466-0811
Ishida Memorial International Residence MYOKEN	93 rooms for single persons (15.1m <sup>2</sup> )	40 Myoken-cho, Showa-ku, Nagoya, 466-0814



## Library Holdings

The University Library is composed of the Central Library, the Medical Library, and departmental libraries. As of April 1st, 2015, the Library holds 3,272,188 volumes of books in total, including 1,527,524 foreign books, as well as a large amount of electronic resources and audio visual collections.

In order to support students' learning experiences, the library established a space called "learning commons" where students can learn in groups through discussion and receive personal guidance for using electronic resources and software.



# Our Partner Institutions

As of Dec. 1, 2015

## Academic Exchange Agreements

- = Inter-University Agreement
- = Inter-School Agreement

### Asia

#### BANGLADESH

- Bangladesh Agricultural University
- Bangladesh University of Engineering & Technology, Department of Physics
- University of Dhaka, Faculty of Social Sciences
- SAARC Meteorological Research Centre

#### BHUTAN

- The Centre for Bhutan Studies

#### CAMBODIA

- Royal University of Phnom Penh
- Royal University of Agriculture
- Royal University of Law and Economics

#### CHINA

- Nanjing University
- Jilin University
- Huazhong University of Science and Technology
- Tsinghua University
- Fudan University
- Xi'an Jiaotong University
- Zhejiang University
- Shanghai Jiao Tong University
- Tongji University
- Northeastern University
- Peking University
- Harbin Institute of Technology
- University of Science and Technology of China
- Chinese Academy of Sciences, the Shanghai Institute of Organic Chemistry
- The Chinese University of Hong Kong
- The University of Hong Kong
- Central South University
- Beijing University of Technology
- Chinese Academy of Sciences, Purple Mountain Observatory
- Chinese Academy of Sciences, National Astronomical Observatories
- China University of Political Science and Law
- East China Normal University, Faculty of Education Sciences
- Chinese Academy of Social Sciences, Institute of Literature and Institute of Literature of National Minorities
- Peking University, School of International Studies
- Chinese Academy of Governance, Department of Law and Department of Political Science
- East China University of Political Science and Law
- Chinese Academy of Sciences, Institute of High Energy Physics
- Beijing International Studies University
- Nanjing University of Aeronautics and Astronautics
- Jiangsu Provincial Academy of Social Sciences (JSASS)
- Chinese Academy of Sciences, Institute of Process Engineering

- Polar Research Institute of China
- Southwest Jiaotong University, School of Economics and Management
- Beijing Institute of Technology, School of Management and Economics
- Chinese Academy of Sciences, Research Center for Eco-Environmental Sciences
- Tianjin University, School of Management and School of Public Administration
- Chinese Academy of Social Sciences, Institute of Population and Labor Economics
- University of International Business and Economics, School of International Trade & Economics
- Chinese Academy of Sciences, Xinjiang Institute of Ecology and Geography
- Chinese Academy of Sciences, Shanghai Institute of Ceramics
- China Meteorological Administration, Institute of Desert Meteorology
- Hainan University, Law School
- The Hong Kong University of Science and Technology, School of Engineering
- Renmin University of China, School of Law
- Shenyang University of Technology
- Sun Yat-sen University, Lingnan College
- Ministry of Health, P.R.China, China-Japan Friendship Hospital
- Beijing Normal University, Academy of Disaster Reduction and Emergency Management, State Key Laboratory of Earth Surface Processes and Resource Ecology
- Xiamen University, School of Law
- Chinese Academy of Sciences, Institute of Theoretical Physics
- Chinese Academy of Sciences, Institute of Geographic Sciences and Natural Resources Research
- Nanjing Normal University, School of Energy & Mechanical Engineering
- Donghua University, College of Foreign Languages
- Shanghai International Studies University, School of Japanese Studies and School of Chinese Studies and Exchange
- Beijing Normal University, Faculty of Education
- Institute of Science and Technology for Development of Shandong (ISTD)

#### INDIA

- University of Pune
- Indian Institute of Science, Bangalore
- Tata Institute of Fundamental Research
- Tata Institute of Fundamental Research, Natural Sciences Faculty
- Indian Institute of Technology Madras
- Indian Institute of Technology Delhi

#### INDONESIA

- Gadjah Mada University
- The State University of Surabaya
- Institute of Technology Bandung
- Indonesian National Institute of Aeronautics and Space
- Padjadjaran University, Faculty of Letters
- Syiah Kuala University, Faculty of Basic Science
- Diponegoro University, Pusat Studi Asia
- Agency for the Assessment and Application of Technology (BPPT), Center for the Assessment and Application of Environmental Technology

- University of Indonesia, Faculty of Engineering
- University of Indonesia, Faculty of Computer Science
- Sepuluh Nopember Institute of Technology

#### REPUBLIC OF KOREA

- Mokpo National University
- Gyeongsang National University
- Ewha Womans University
- Hanyang University
- Korea University
- Seoul National University
- Kyung Hee University
- Yonsei University
- Sungkyunkwan University
- Pohang University of Science and Technology
- Korea Advanced Institute of Science and Technology (KAIST)
- Korea Maritime and Ocean University
- Korean Research Institute of Standards and Science, Astronomy Observatory
- Chungnam National University, College of Economics and Business Administration
- Korea University, College of Education
- Korea Institute for Advanced Study, School of Mathematics
- Seoul National University, College of Law
- Kyungnam University, Industry Academic Cooperation Foundation
- Sungkyunkwan University, School of Social Sciences
- Korea Legislation Research Institute
- Pukyong National University, College of Fisheries Sciences
- Pusan National University, College of Engineering
- Hankuk University of Foreign Studies, Graduate School and Graduate School of International Area Studies
- Seoul National University, School of Earth and Environmental Sciences
- Chonnam National University, College of Business Administration
- University of Seoul, College of Public Affairs and Economics
- Chonbuk National University, Institute for North-East Asian Law
- Korea Institute of Geoscience and Mineral Resources, Geologic Environment Research Division
- Kyungpook National University, Faculty of Engineering
- Institute of Sunchang Fermented Soybean Products
- Korea Institute of Geoscience and Mineral Resources, Geologic Environment Research Division
- Seoul National University Hospital
- Korean Space Weather Center
- ASAN Medical Center
- Dong-A University, College of Natural Resources and Life Science
- Korea Aerospace University, College of Engineering, Department of Materials Science, Center of Surface Technology and Applications
- Pusan National University, Professional Graduate School of Law
- Korea Institute of Ocean Science and Technology, Korea Ocean Satellite Center
- Chungnam National University, College of Agriculture and Life Sciences

#### LAOS

- National University of Laos
- National Agriculture and Forestry Research Institute
- Champasack University

#### MALAYSIA

- MARA University of Technology, Faculty of Mechanical Engineering
- Universiti Putra Malaysia, Faculty of Science

#### MONGOLIA

- National University of Mongolia
- Mongolian University of Science and Technology
- Mongolian National University of Medical Sciences
- Mineral Resources and Petroleum Authority of Mongolia, Geological Information Center
- National Legal Center of Mongolia
- Mongolian University of Science and Technology, School of Geology and Petroleum Engineering
- Mongolian Academy of Sciences, Institute of Geography
- Mongolian Academy of Sciences, Institute of Philosophy, Sociology and Law
- Institute of Meteorology, Hydrology and Environment, Mongolia
- Mongolian National University of Education

#### MYANMAR

- University of Yangon
- The University of Medicine 1, Yangon

#### NEPAL

- Kathmandu University, School of Science

#### PHILIPPINES

- University of the Philippines, Los Banõs
- University of the Philippines, Diliman
- University of the Philippines, Manila, UP College of Nursing

#### SINGAPORE

- National University of Singapore, Yong Loo Lin School of Medicine, Alice Lee Centre for Nursing Studies
- National University of Singapore, NUS Business School
- National University of Singapore, Office of Safety, Health & Environment
- National University of Singapore, Center for Quantum Technologies

#### SRI LANKA

- University of Sri Jayawardenepura, Faculty of Humanities and Social Sciences

#### THAILAND

- Kasetsart University
- Chulalongkorn University
- Chulabhorn Research Institute/Chulabhorn Graduate Institute
- Rajamangala University of Technology Thanyaburi
- Bangkok Dusit Medical Services Public Company Limited
- King Mongkut's University of Technology North Bangkok, Science and Technology Research Institute
- Thammasat University, Faculty of Economics
- Mahidol University, ASEAN Institute for Health Development
- Chiang Mai University, Faculty of Economics

#### VIETNAM

- Hanoi University of Science and Technology
- Vietnam National University, Hanoi
- The Ministry of Justice of the Socialist Republic of Viet Nam

- Vietnam Institute of State and Law
- Hanoi Law University
- Ho Chi Minh City University of Law
- Vietnamese Academy of Science and Technology, Ho Chi Minh City Institute of Resources Geography
- Vietnam National University- Ho Chi Minh City, University of Science, Faculty of Environmental Science
- Foreign Trade University
- Hue University of Medicine and Pharmacy
- Vietnam Academy of Science and Technology, Institute of Mathematics

#### TAIWAN

- National Taiwan University
- National Chengchi University
- National Tsing Hua University
- National Chung Cheng University
- National Chengchi University, College of Law
- National Taiwan Normal University, College of Education
- Soochow University, School of Law
- Soochow University, School of Foreign Languages and Cultures
- National Taiwan University, Department of Atmospheric Sciences
- Taiwan Ocean Research Institute
- National Chiao Tung University, College of Electrical and Computer Engineering
- National Chung Cheng University, Center for International Affairs and Exchange

### Pacific

#### AUSTRALIA

- University of Sydney
- Monash University
- Flinders University
- University of South Australia
- The University of Adelaide
- The Australian National University
- The University of Western Australia
- The University of Melbourne, Asian Law Centre
- Commonwealth Scientific and Industrial Research Organization, Division of Ecosystem Sciences (CSIRO)
- The University of Adelaide, Faculty of Health Sciences

#### NEW ZEALAND

- National Institute of Water and Atmospheric Research
- University of Auckland, Center for Geophysical Research
- University of Canterbury, Faculty of Science

### Europe

#### ARMENIA

- Yerevan Physics Institute

#### AUSTRIA

- University of Innsbruck
- Johannes Kepler University Linz, Faculty of Law
- The Medical University of Vienna
- FH JOANNEUM Gesellschaft mbH University of Applied Sciences
- Universität Klagenfurt, Institute of Social Ecology, Faculty for Interdisciplinary Studies

#### BULGARIA

- Sofia University, Department of Astronomy
- Bulgarian Academy of Sciences, Institute of Electronics and Space Research Institute, Space Astronomy Division
- Bulgarian Academy of Sciences, Institute of Mathematics

#### DENMARK

- University of Copenhagen

#### FINLAND

- Finnish Meteorological Institute, Department of Geophysics

#### FRANCE

- Ecole Nationale des Ponts et Chaussées (ENPC)
- Université Paris Diderot-Paris 7
- Université Jean Moulin-Lyon 3
- Université de Grenoble\*
- Université Paris-Est
- Université de Strasbourg
- École Normale Supérieure de Lyon
- Fondation Maison des Sciences de l'Homme
- Aix-Marseille Université
- Université Stendhal (Université de Grenoble 3)
- Université de Paris-Sorbonne, Paris 4
- Université Panthéon Assas, Paris 2
- Université Paul Cézanne, Aix-Marseille 3
- Université de Provence, Aix-Marseille 1
- École Nationale Supérieure d'Architecture Paris Val-de-Seine
- Université de Technologie de Belfort-Montbéliard

\* Université de Grenoble represents Université Joseph Fourier (Grenoble 1), Université Pierre Mendès France (Grenoble 2), Université Stendhal (Grenoble 3), Institut d'Études Politiques de Grenoble, Institut Polytechnique de Grenoble, Université Savoie Mont Blanc.

#### GERMANY

- Technische Universität Braunschweig
- Technische Universität München
- Technische Universität Chemnitz
- University of Freiburg
- RWTH Aachen
- University of Freiburg, Faculty of Economics and Behavioral Sciences
- University of Cologne, I Physical Institute
- Johannes Gutenberg University Mainz, Faculty of Chemistry, Pharmaceutical Sciences and Geoscience
- German Aerospace Center, Institute of Aerospace Medicine
- University of Ulm, Faculty of Mathematics and Economics
- University of Freiburg, Faculty of Medicine
- University of Regensburg, Faculty of Law
- University of Münster, Faculty of Chemistry and Pharmacy
- Ruhr-Universität Bochum, Faculty of Physics and Astronomy and Faculty of Electrical Engineering and Information Technology
- Technische Universität Kaiserslautern, Faculty of Architecture, Spatial and Environmental Planning and Civil Engineering
- Freie Universität Berlin, Environmental Policy Research Centre
- The Research Center for Eastern and South Eastern Europe in Regensburg, Institute for East European Law
- Technische Universität Darmstadt, Department of Civil Engineering and Geodesy
- Ruhr Universität Bochum, Faculty of Mathematics



- o University of Duisburg-Essen, Institute of East Asian Studies
- o Fraunhofer Institute for Chemical Technology ICT, Fraunhofer-Gesellschaft
- o CFK Valley Stade e.V.
- o EBS Law School
- o Johannes Gutenberg University Mainz, Faculty of Physics, Mathematics and Computer Science
- o Leibniz Institute of Ecological Urban and Regional Development

## HUNGARY

- o Hungarian Academy of Sciences, Institute for Legal Studies

## ITALY

- National Institute of Nuclear Physics (INFN)
- University of Catania
- University of Bologna
- Sapienza University of Rome

## KAZAKHSTAN

- o Kazakh Humanitarian and Law University
- o Legislation Research Institute, Republic of Kazakhstan

## LATVIA

- o Latvian State University

## NORWAY

- University of Oslo
- o University of Tromsø, Faculty of Science

## POLAND

- University of Warsaw
- o Medical University of Gdańsk
- o Warsaw University of Technology
- o Polish Academy of Sciences, Institute of Geological Sciences, Krakow Research Centre

## RUSSIA

- o Institute of Theoretical and Experimental Physics
- o Ministry of Health of Russia, Institute of Biomedical Problems
- o Lomonosov Moscow State University, Faculty of Physics
- o Russian Academy of Sciences, Siberian Branch, Institute of Cytology and Genetics
- o Moscow State Engineering and Physics Institute (Technical University-MEPHI)
- o Russian Academy of Sciences, Institute of Computer Aided Design
- o Russian Academy of Sciences, Far Eastern Branch, Institute of Cosmophysical Research and Radiowave Propagation (IKIR)
- o Russian Academy of Sciences, Siberian Branch, Institute of Solar-Terrestrial Physics (ISTP)
- o Lomonosov Moscow State University, Department of Chemistry
- o Russian Academy of Sciences, Siberian Branch, YuG. Shafer Institute of Cosmophysical Research and Aeronomy (KFIA)

## SPAIN

- University of Barcelona
- o Institute of Space Studies of Catalonia (IEEC)

## SWEDEN

- Uppsala University

- Royal Institute of Technology
- o Swedish Institute of Space Physics
- o Lund University, Faculty of Law
- o SAFER - Vehicle and Traffic Safety Centre at Chalmers
- o Lund University, Faculty of Medicine

## SWITZERLAND

- University of Geneva
- o University of Bern, Interdisciplinary Center for General Ecology (IKAOe)

## U.K.

- The University of Sheffield
- The University of Warwick
- University of Bristol
- University of London, School of Oriental and African Studies (SOAS)
- The University of Leeds
- The University of Edinburgh
- University of Cambridge, St John's College
- o The University of Nottingham, School of Biosciences
- o University of East Anglia, Faculty of Social Sciences, School of International Development
- o The University of Manchester, Faculty of Life Sciences
- o University of Leicester, Department of Physics and Astronomy
- o The University of Oxford, Department of Physics
- o The University of Manchester, School of Environment & Development
- o The University of Warwick
- o The University of Edinburgh, College of Science & Engineering, School of Chemistry
- o The University of Edinburgh, Higgs Centre for Theoretical Physics

## UKRAINE

- o Ukrainian Academy of Sciences, Institute of Theoretical Physics

## UZBEKISTAN

- Tashkent State University of Law (TSUL)
- University of World Economy and Diplomacy
- Tashkent State Technical University named after Abu Raykhan Beruniy
- o Samarkand State University, School of Law
- o Academy of Public Administration under the President of the Republic of Uzbekistan

## North America

### CANADA

- York University
- University of Toronto, the Faculty of Arts and Science
- Université de Montréal
- University of Alberta
- o Carleton University, Faculty of Science
- o University of Toronto, Ontario Institute for Studies in Education (OISE)
- o University of Victoria, Centre for Asia-Pacific Initiatives
- o University of Ottawa, School of International Development and Global Studies

### USA

- Oberlin College
- North Carolina State University
- Harvard-Yenching Institute

- University of Cincinnati
- St. Olaf College
- Southern Illinois University, Carbondale
- University of Illinois at Urbana-Champaign
- New York University
- University of Kentucky
- University of Minnesota
- University of California, Los Angeles
- The University of North Carolina at Chapel Hill
- University of California, Davis
- University of California, Berkeley
- University of Florida
- Iowa State University
- o University of Michigan, College of Engineering
- o University of California, Los Angeles, Department of Education
- o University of Houston, Cullen College of Engineering
- o University of California, Berkeley, Department of Physics
- o University of North Carolina at Chapel Hill, School of Medicine
- o University of California Berkeley, College of Natural Resources
- o University of Alaska Fairbanks, Geophysical Institute
- o National Oceanic and Atmospheric Administration, Space Environment Laboratory
- o National Oceanic and Atmospheric Administration, National Geophysical Data Center
- o Massachusetts Institute of Technology, Haystack Observatory
- o Harvard Medical School
- o Tulane University, School of Medicine
- o University of Pennsylvania, School of Medicine
- o University of California, San Diego, Center for Astrophysics and Space Sciences
- o Colorado School of Mines
- o University of Alaska Fairbanks, Geophysical Institute
- o Duke University, School of Medicine
- o Johns Hopkins University, School of Medicine
- o University of Wisconsin Law School
- o University of Wisconsin Law School, East Asian Legal Studies Center
- o University of Maryland, Department of Mechanical Engineering
- o University of Washington, Genetically Engineered Materials Science and Engineering Center
- o University of California, Los Angeles, California NanoSystems Institute
- o Northwestern University, Materials Research Institute
- o University of California, Berkeley, Center for Global Metropolitan Studies
- o Michigan State University, Department of Physics and Astronomy
- o Green Mountain College
- o University of California, Santa Barbara, Bren School of Environmental Science and Management
- o University of Michigan, College of Literature, Science, and the Arts, Department of Chemistry
- o University of Michigan, College of Engineering, Macromolecular Science and Engineering Center
- o University of Pittsburgh, School of Education
- o Ohio State University, Center for Cosmology and AstroParticle Physics; College of Arts and Sciences, Department of Physics and Department of Astronomy
- o University of Colorado Boulder, Laboratory for Atmospheric and Space Physics

- o Virginia Polytechnic Institute and State University, Center for Space Science and Engineering Research
- o University of Washington, College of Engineering
- o The University of Akron, School of Law
- o Ohio State University, College of Education and Human Ecology

## Latin America and the Caribbean

### ARGENTINE

- o National University of Rosario, Faculty of Biochemical and Pharmaceutical Sciences
- o Luis F. Leloir, Campomar Foundation, The Research Institute of Biochemistry

### BOLIVIA

- o Universidad Mayor de San Andres, La Paz, Faculty of Sciences, Chacaltaya Cosmic Ray Observatory

### BRAZIL

- Universidade de Brasilia
- Universidade de São Paulo
- o Ministry of Science and Technology, National Institute for Space Research
- o Fundacao Joaquim Nabuco

### GUATEMALA

- o Del Valle de Guatemala University, School of Engineering

### MEXICO

- Universidad Nacional Autonoma de Mexico
- o Universidad de Sonora

## Middle East

### IRAN

- o University of Kurudistan, Faculty of Engineering

### TURKEY

- Bilkent University
- o Istanbul Technical University

## Africa

### EGYPT

- Cairo University
- o Tanta University, Faculty of Engineering

### GHANA

- o University of Ghana, Faculty of Social Studies

### KENYA

- University of Nairobi
- o African Institute for Capacity Development (AICAD)

### SOUTH AFRICA

- Stellenbosch University
- o South African Astronomical Observatory
- o The Human Sciences Research Council (HSRC)

## International Organization

- Southeast Asian Regional Center for Graduate Study and Research in Agriculture (SEARCA)
- European Organization for Nuclear Research (CERN)
- United Nations Centre for Regional Development (UNCRD)
- o International Institute for the Unification of Private Law

## Multilateral

- Chulalongkorn University (Thailand); Hanoi University of Science and Technology (Vietnam)
- Tashkent State Technical University named after Abu Raykhan Beruniy (Uzbekistan); University of Tsukuba (Japan)
- o Renmin University of China, Law School (China); Sungkyunkwan University, Law School and School of Social Sciences (Korea); Tsinghua University, School of Law (China); Shanghai Jiao Tong University, Koguan Law School (China); Seoul National University, School of Law (Korea)
- o The University of Adelaide, Faculty of Health Sciences (Australia); University of Freiburg, Faculty of Medicine (Germany)

## Agreements for Industry-University Collaboration

## Europe

### U.K.

- University of Warwick
- o NCC Operations Ltd. as legal entity for the University of Bristol National Composites Centre

## North America

### USA

- North Carolina State University

## Multilateral

- Mongolian University of Science and Technology (Mongolia); University of Toyama (Japan); Japan Geocommunications Co. Ltd. (Japan)
- o Pôle EMC2 (France); IRT Jules Verne (France); Kanazawa Institute of Technology, Innovative Composite Materials Research and Development Center (Japan)

## Agreement for International Joint Research

## Asia

### REPUBLIC OF KOREA

- Sungkyunkwan University, Center for Advanced Plasma Surface Technology

## Agreements for Internship

## International Organization

- o The United Nations Educational Scientific and Cultural Organization, Asia and the Pacific Regional Bureau for Education (UNESCO Bangkok)
- o The International Organization for Migration (IOM)

## Memorandum of Understanding on the Establishment of the Office

## Asia

### THAILAND

- o Chulalongkorn University, Research Services Center of Petroleum and Petrochemical College

## International Networks

- Academic Consortium 21 (AC21)
- University Mobility in Asia and the Pacific (UMAP)
- OpenCourseWare Consortium
- Japan-Canada Academic Consortium
- Japan-UK Research and Education Network for Knowledge Economy Initiatives (RENKEI)

## Overseas Research and Education Bases

- China Center for International Exchange (Shanghai, China)
- Uzbekistan Office (Tashkent, Uzbekistan)
- European Center (Freiburg, Germany)
- Bangkok Office (Bangkok, Thailand)
- Mongolia Office (Ulaanbaatar, Mongolia)
- Vietnam Office (Hanoi, Vietnam)
- Cambodia Office (Phnom Penh, Cambodia)
- Laos Office (Vientiane, Laos)
- Philippine Office (Los Banos)
- Technology Partnership, Inc. (North Carolina, USA)
- Centers for research and education in the field of law (Tashkent, Uzbekistan • Ulaanbaatar, Mongolia • Hanoi/ Ho Chi Minh City, Vietnam • Phnom Penh, Cambodia • Yangon, Myanmar • Yogyakarta, Indonesia • Vientiane, Laos)
- Field Research Center (Ulaanbaatar, Mongolia)
- Nagoya Endoscopy Training Center (Hue/Hanoi, Vietnam • Yangon, Myanmar)
- Asian Satellite Campuses (Phnom Penh, Cambodia/Ulaanbaatar, Mongolia/Hanoi, Vietnam/Tashkent, Uzbekistan/Vientiane, Laos/Los Banos, Philippine)

# International Exchange

## International Students by Country / Region

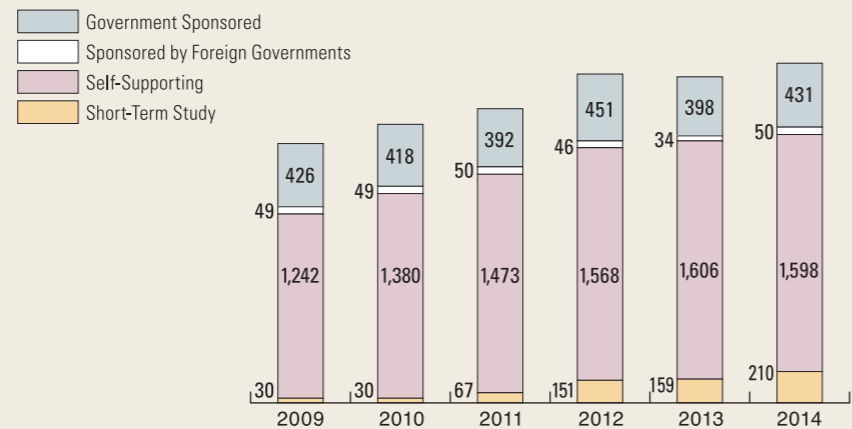
		FY2014			
<b>Asia</b>	Bangladesh	29			
	Bhutan	2			
	Cambodia	66			
	China	947			
	East Timor	1			
	India	21			
	Indonesia	86			
	Republic of Korea	229			
	Laos	11			
	Malaysia	59			
	Mongolia	34			
	Myanmar	20			
	Nepal	10			
	Pakistan	6			
	Philippines	35			
	Singapore	16			
	Sri Lanka	6			
	Taiwan	66			
	Thailand	85			
	Vietnam	91			
<b>Subtotal</b>	<b>1,820</b>				
<b>Pacific</b>	Australia	17			
	New Zealand	3			
	Papua New Guinea	1			
<b>Subtotal</b>	<b>21</b>				
<b>Europe</b>	Armenia	2			
	Austria	4			
	Azerbaijan	1			
	Bulgaria	2			
	Croatia	1			
	Czech Republic	2			
	Estonia	2			
	Finland	2			
	France	32			
	Germany	34			
Greece	2				
<b>North America</b>	Canada	7			
	United States	67			
	<b>Subtotal</b>	<b>74</b>			
	<b>Latin America and the Caribbean</b>	Argentina	1		
		Bolivia	5		
		Brazil	33		
		Chile	3		
		Colombia	2		
		Costa Rica	1		
		Ecuador	2		
		El Salvador	2		
		Honduras	2		
		Jamaica	1		
		Mexico	6		
		Panama	1		
		<b>Middle East</b>	Hungary	4	
			Italy	8	
			Kazakhstan	3	
			Kyrgyz Republic	5	
Latvia			1		
Luxembourg	1				
Netherlands	4				
Norway	1				
Poland	5				
Romania	1				
Russia	6				
Serbia	1				
Slovak Republic	1				
Spain	3				
Sweden	15				
Switzerland	5				
Tajikistan	1				
U.K.	14				
Ukraine	2				
Uzbekistan	42				
<b>Subtotal</b>	<b>207</b>				
<b>Africa</b>	Peru	4			
	Venezuela	2			
	<b>Subtotal</b>	<b>65</b>			
	<b>Middle East</b>	Afghanistan	20		
		Iran	5		
		Iraq	3		
		Israel	2		
		Saudi Arabia	2		
		Syria	2		
		Turkey	15		
		Yemen	1		
		<b>Subtotal</b>	<b>50</b>		
		<b>Africa</b>	Benin	1	
			Cameroon	2	
	The Democratic Republic of the Congo		2		
	Egypt		10		
	Ethiopia		3		
	Ghana		3		
	Ivory Coast		1		
Kenya	8				
Lesotho	1				
Madagascar	3				
Malawi	1				
Mozambique	1				
Nigeria	5				
Senegal	2				
Tanzania	1				
Tunisia	2				
Uganda	2				
Zambia	2				
Zimbabwe	2				
<b>Subtotal</b>	<b>52</b>				
<b>Total (97 Countries / Regions)</b>	<b>2,289</b>				

## International Students by School

School / Graduate School	FY2014
Letters	195
Education	83
Law	262
Economics	148
Informatics and Sciences	23
Science	113
Medicine	158
Engineering	494
Agricultural Sciences	77
International Development	280
Mathematics	13
Languages and Cultures	156
Environmental Studies	122
Information Science	83
Pharmaceutical Sciences	1
Institute of Materials and Systems for Sustainability	1
Instituted for Space-Earth Environmental Research	1
Research Center of Health, Physical Fitness and Sports	2
International Education & Exchange Center	8
International Language Center	69
<b>Total</b>	<b>2,289</b>

## International Students by Funding Source

	2009	2010	2011	2012	2013	2014
Government Sponsored	426	418	392	451	398	431
Sponsored by Foreign Governments	49	49	50	46	34	50
Self-Supporting	1,242	1,380	1,473	1,568	1,606	1,598
Short-Term Study	30	30	67	151	159	210
<b>Total</b>	<b>1,747</b>	<b>1,877</b>	<b>1,982</b>	<b>2,216</b>	<b>2,197</b>	<b>2,289</b>

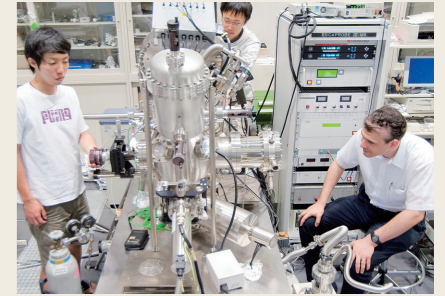
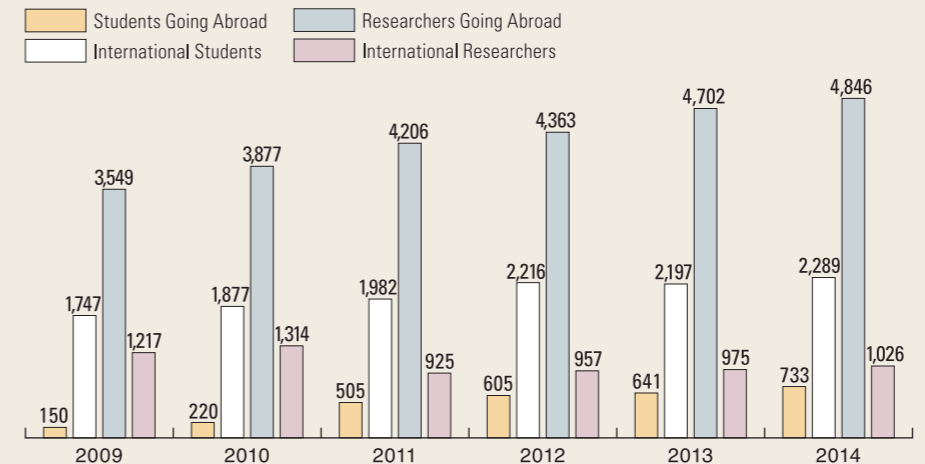


## Students Going Abroad by Country / Region

		FY 2014		
<b>Asia</b>	Bangladesh	1		
	Bhutan	1		
	Cambodia	44		
	China	47		
	Indonesia	20		
	Kyrgyz Republic	6		
	Republic of Korea	59		
	Laos	12		
	Malaysia	22		
	Mongolia	13		
	Myanmar	5		
	Nepal	3		
	Philippines	24		
	Singapore	9		
	Sri Lanka	1		
	Taiwan	19		
	Thailand	84		
	Vietnam	33		
	<b>Subtotal</b>	<b>403</b>		
	<b>Pacific</b>	Australia	61	
New Zealand		1		
Samoa		2		
<b>Subtotal</b>		<b>64</b>		
<b>Europe</b>		Austria	9	
	Belgium	1		
	Croatia	1		
	Denmark	3		
	France	26		
	Germany	53		
	Greece	1		
	Ireland	1		
	Italy	2		
	<b>North America</b>	Malta	1	
		Netherlands	2	
Poland		3		
Russia		2		
Spain		4		
Sweden		5		
Switzerland		6		
U.K.		27		
<b>Subtotal</b>		<b>147</b>		
<b>North America</b>		Canada	10	
		United States	97	
<b>Subtotal</b>	<b>107</b>			
<b>Middle East</b>	Turkey	2		
	<b>Subtotal</b>	<b>2</b>		
<b>Africa</b>	Egypt	2		
	Ethiopia	2		
	Kenya	4		
	Namibia	1		
	South Africa	1		
<b>Subtotal</b>	<b>10</b>			
<b>Total (46 Countries / Regions)</b>	<b>733</b>			

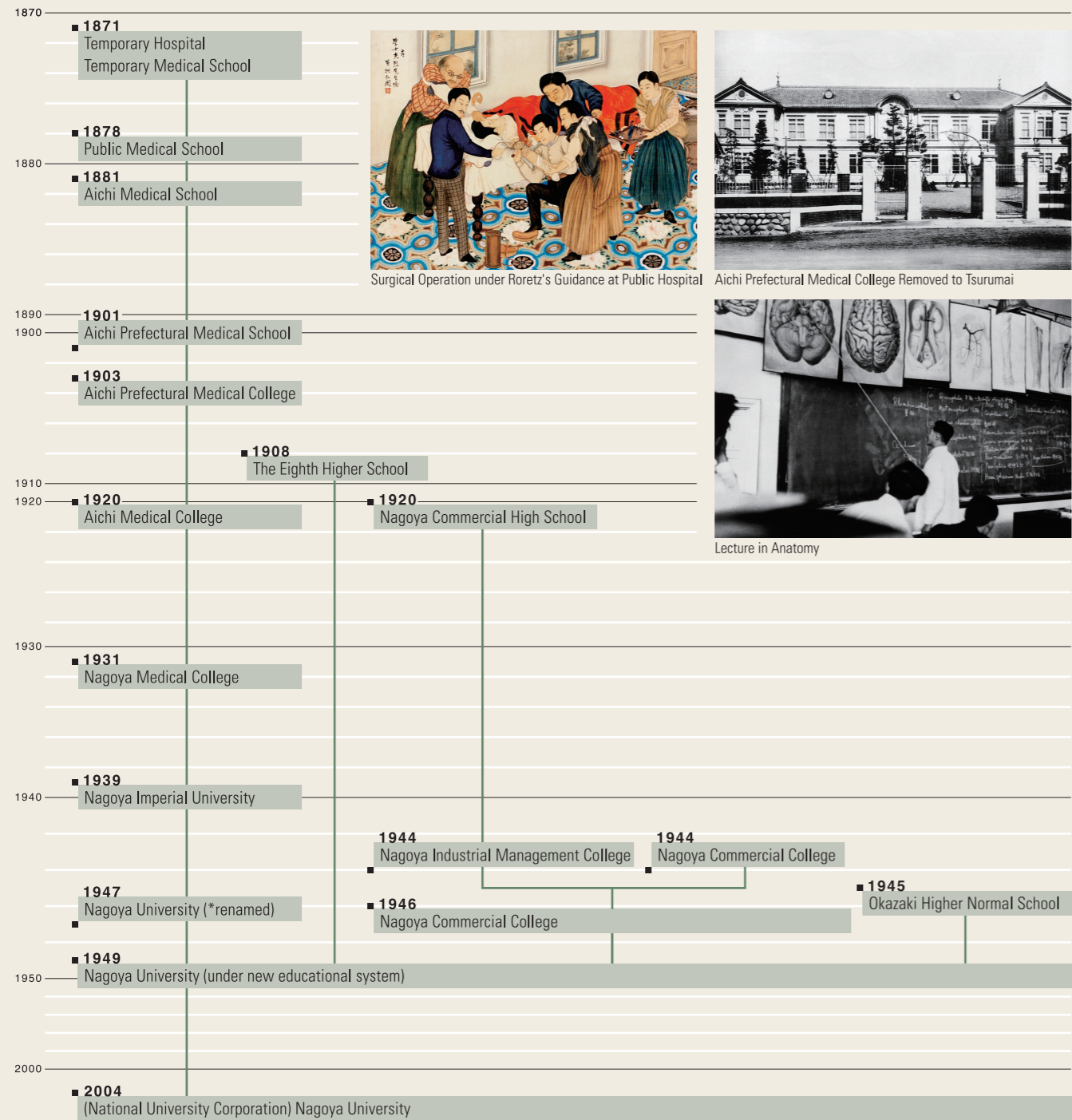
## Trends of International Exchange

	2009	2010	2011	2012	2013	2014
Students Going Abroad	150	220	505	605	641	733
International Students	1,747	1,877	1,982	2,216	2,197	2,289
Researchers Going Abroad	3,549	3,877	4,206	4,363	4,702	4,846
International Researchers	1,217	1,314	925	957	975	1,026





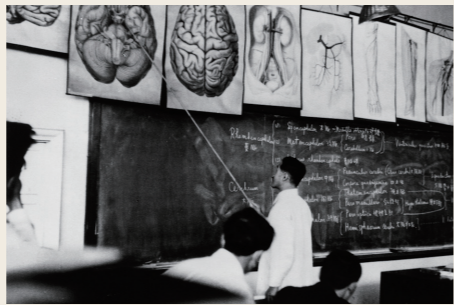
# Historical Chart



Surgical Operation under Roretz's Guidance at Public Hospital



Aichi Prefectural Medical College Removed to Tsurumai



Lecture in Anatomy

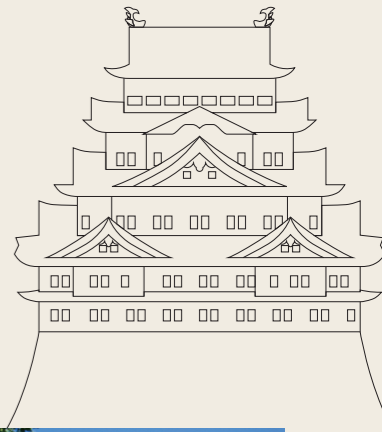
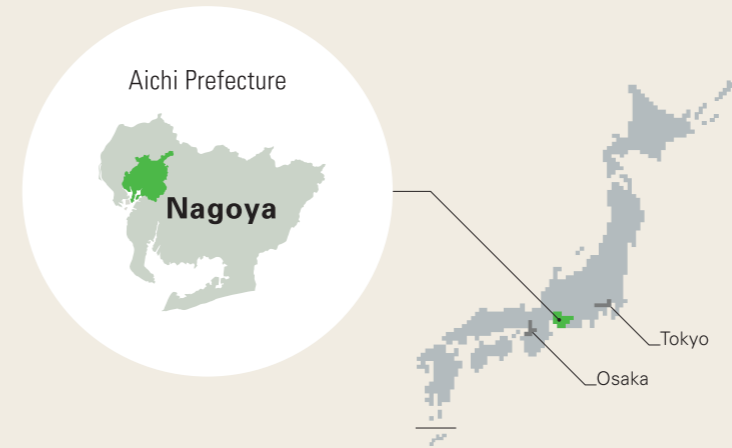


Toyoda Auditorium (around 1960)



Toyoda Auditorium (2010)

# The City of Nagoya



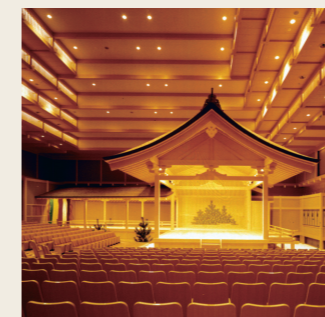
- ✓ Nagoya City is one of the top-ranking economies worldwide, boasting leading industries in automotive manufacturing, machinery, electronics and ceramics.
- ✓ The Chubu area of Japan is particularly renowned as the home of Oda Nobunaga, Toyotomi Hideyoshi and Tokugawa Ieyasu, three leaders who unified Japan over 400 years ago, bringing an end to the "Period of Warring States."
- ✓ Nagoya Castle, originally built by Tokugawa Ieyasu and famous for the golden dolphins found on its donjon, serves as the landmark of the region.



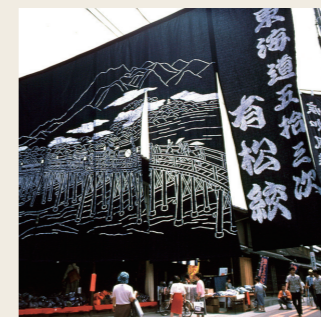
JR Central Towers



Nagoya Castle



Nagoya Noh Theater



Arimatsu Shibori Matsuri (festival)



Nagoya City Archives



The Golden Dolphin



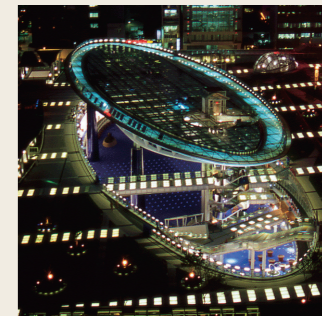
Nagoya Congress Center



Nagoya Port Triton



Nagoya City Art Museum



OASIS 21