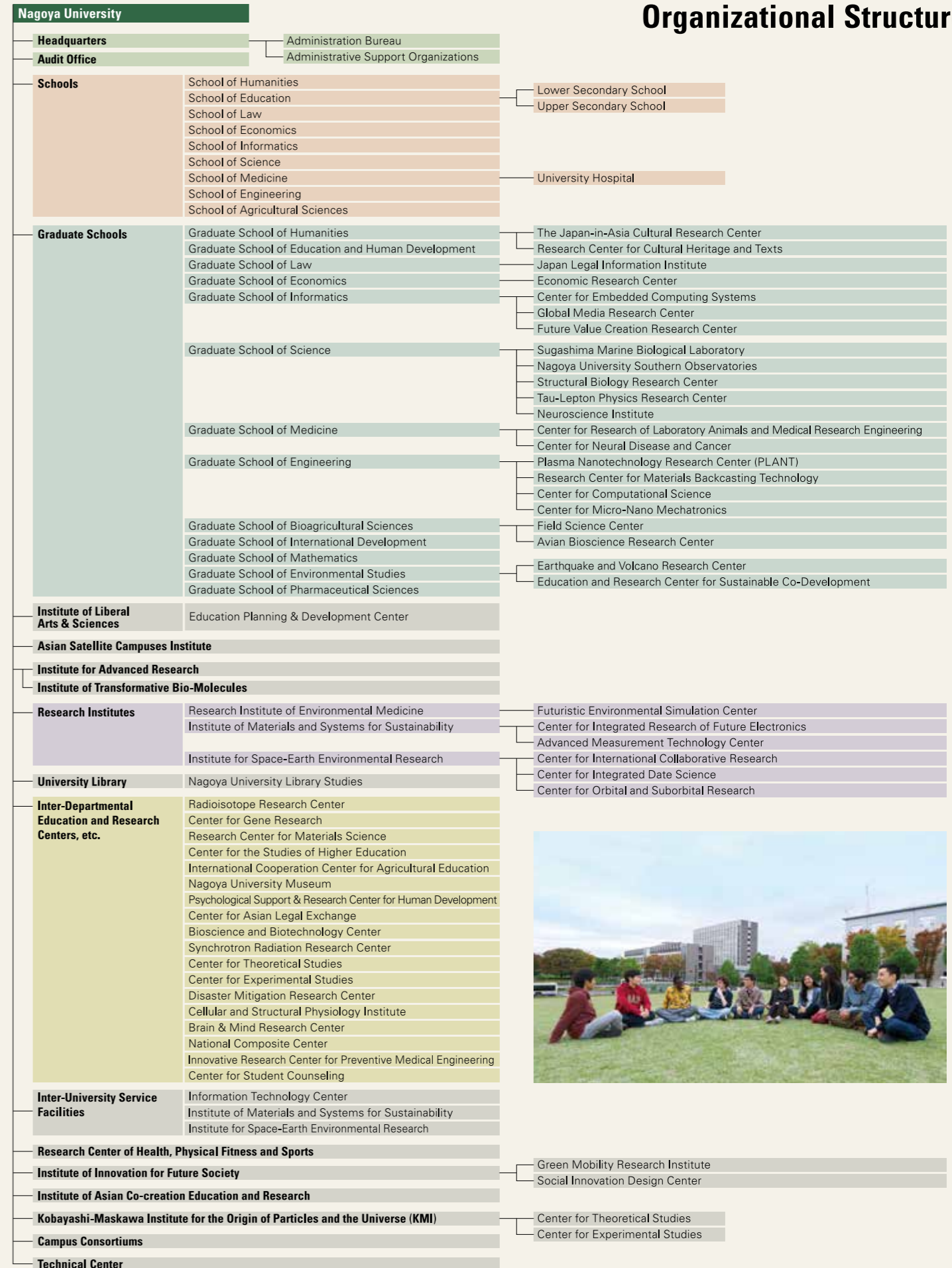




- 01 Organizational Structure
- 02 Schools (Undergraduate Courses)
- 03 Graduate Schools (Graduate Courses)
- 06 Staff  
Student Enrollment
- 07 Degrees Conferred  
Financial Outline
- 08 Highlights of Research and Education Programs
- 09 Housing for International Researchers and Students  
Library Holdings
- 10 Our Partner Institutions
- 14 International Exchange
- 16 Historical Chart
- 17 The City of Nagoya

# Organizational Structure



\*English names for the above organizations are tentative.

## Schools (Undergraduate Courses)

Schools	Departments	Courses / Programs	
School of Humanities	Department of Humanities	<ul style="list-style-type: none"> <li>Language and Culture Studies Degree Program</li> <li>Literature and Linguistic Program</li> <li>Philosophy and Ethics Program</li> </ul>	
		<ul style="list-style-type: none"> <li>History and Culture Studies Degree Program</li> <li>History and Anthropology Program</li> </ul>	
		<ul style="list-style-type: none"> <li>Environmental and Behavioral Science Degree Program</li> <li>Environmental and Behavioral Science Program</li> </ul>	
School of Education	Department of Human Developmental Sciences	<ul style="list-style-type: none"> <li>Lifelong Education and Development Course</li> <li>School Education and Information Science Course</li> <li>International Education and Culture Course</li> <li>Human Psychology Course</li> <li>Counseling and Psychotherapy Course</li> </ul>	
School of Law	Department of Law and Political Science	<ul style="list-style-type: none"> <li>Fundamental Positive Law</li> <li>Fundamental Political Science</li> <li>Comtemporary Legal Disciplines</li> <li>Dispute Settlement Law</li> <li>Business Economics Law</li> <li>Public Policy</li> <li>International Relations</li> <li>Legal and Administrative Informatics</li> </ul>	
School of Economics	Department of Economics	<ul style="list-style-type: none"> <li>Theoretical Economics</li> <li>Applied Economics</li> </ul>	
	Department of Business Administration	<ul style="list-style-type: none"> <li>Corporate Management</li> <li>Information Accounting</li> </ul>	
School of Informatics	Department of Natural Informatics	<ul style="list-style-type: none"> <li>Division of Mathematical Informatics</li> <li>Division of Complex Systems Science</li> </ul>	
	Department of Human and Social Informatics	<ul style="list-style-type: none"> <li>Division of Social Informatics</li> <li>Division of Cognitive and Psychological Sciences</li> </ul>	
	Department of Computer Science	<ul style="list-style-type: none"> <li>Division of Computing and Software Systems</li> <li>Division of Intelligent Systems</li> </ul>	
School of Science	Department of Mathematics	<ul style="list-style-type: none"> <li>Mathematics</li> </ul>	
	Department of Physics	<ul style="list-style-type: none"> <li>Physics</li> </ul>	
	Department of Chemistry	<ul style="list-style-type: none"> <li>Chemistry</li> </ul>	
	Department of Biological Science	<ul style="list-style-type: none"> <li>Biological Science</li> </ul>	
	Department of Earth and Planetary Sciences	<ul style="list-style-type: none"> <li>Earth and Planetary Sciences</li> </ul>	
School of Medicine	Department of Medicine		<ul style="list-style-type: none"> <li>Anatomy</li> <li>Physiology</li> <li>Biochemistry</li> <li>Pathology</li> <li>Microbiology</li> <li>Medical Zoology</li> <li>Immunology</li> <li>Legal Medicine</li> <li>Hygiene</li> <li>Public Health</li> <li>Preventive Medicine</li> <li>Internal Medicine, Neurology</li> <li>Surgery, Thoracic Surgery</li> <li>Orthopedic Surgery</li> <li>Obstetrics and Gynecology</li> <li>Ophthalmology</li> <li>Psychiatry</li> <li>Pediatrics</li> <li>Dermatology</li> <li>Urology</li> <li>Otorhinolaryngology</li> <li>Radiology Medicine</li> <li>Anesthesiology</li> <li>Oral and Maxillofacial Surgery</li> <li>Neurosurgery</li> <li>Geriatrics</li> <li>Emergency Medicine</li> <li>Clinical Laboratory Medicine</li> </ul>
	Department of Health Sciences	Department of Nursing	<ul style="list-style-type: none"> <li>Nursing</li> </ul>
		Department of Radiological Technology	<ul style="list-style-type: none"> <li>Radiological Technology</li> </ul>
		Department of Medical Technology	<ul style="list-style-type: none"> <li>Medical Technology</li> </ul>
		Department of Physical Therapy	<ul style="list-style-type: none"> <li>Physical Therapy</li> </ul>
		Department of Occupational Therapy	<ul style="list-style-type: none"> <li>Occupational Therapy</li> </ul>
	School of Engineering	Chemistry and Biotechnology	
Physical Science and Engineering			
Material Science and Engineering			
Electrial Engineering, Electronics, and Information Engineering			
Mechanical and Aerospace Engineering			
Energy Science and Engineering			
Civil Engineering and Architecture			
School of Agricultural Sciences	Department of Bioenvironmental Sciences	<ul style="list-style-type: none"> <li>Bioenvironmental Sciences</li> </ul>	
	Department of Bioresource Sciences	<ul style="list-style-type: none"> <li>Bioresource Sciences</li> </ul>	
	Department of Applied Biosciences	<ul style="list-style-type: none"> <li>Applied Biosciences</li> </ul>	

\*English names for the above departments, courses and programs are tentative.

## Global 30 International Programs (Undergraduate)

Programs	Affiliated Schools
Automotive Engineering Program	<ul style="list-style-type: none"> <li>School of Engineering</li> </ul>
Fundamental and Applied Physics Program	<ul style="list-style-type: none"> <li>School of Engineering</li> <li>School of Science</li> </ul>
Chemistry Program	<ul style="list-style-type: none"> <li>School of Science</li> <li>School of Engineering</li> </ul>
Biological Science Program	<ul style="list-style-type: none"> <li>School of Science</li> <li>School of Agricultural Sciences</li> </ul>
Program in Social Sciences	<ul style="list-style-type: none"> <li>School of Law</li> <li>School of Economics</li> </ul>
Japan-in-Asia Cultural Studies Program	<ul style="list-style-type: none"> <li>School of Humanities</li> </ul>

## Graduate Schools (Graduate Courses)

Graduate Schools	Departments	Courses / Fields
Graduate School of Humanities	Department of Humanities	<ul style="list-style-type: none"> <li>Language and Culture Studies Degree Program</li> <li>Literature and Linguistic Program</li> <li>Philosophy and Ethics Program</li> </ul>
		<ul style="list-style-type: none"> <li>History and Culture Studies Degree Program</li> <li>History and Anthropology Program</li> <li>Integrated Culture Studies Program</li> </ul>
		<ul style="list-style-type: none"> <li>English Professionals Training Degree Program</li> <li>English Professionals Training Program</li> </ul>
		<ul style="list-style-type: none"> <li>Multicultural Studies Degree Program</li> <li>Transnational Interaction and Diversity Studies Program</li> </ul>
Graduate School of Education and Human Development	Department of Educational Sciences	<ul style="list-style-type: none"> <li>Lifelong Education and Development</li> <li>School Education and Information Sciences</li> <li>Foundations of Education and Human Development</li> <li>Higher Education</li> <li>Sports Science for Lifelong Physical Activity</li> </ul>
	Department of Psychology and Human Developmental Sciences	<ul style="list-style-type: none"> <li>Psychological Sciences</li> <li>Human Development and Clinical Psychology</li> <li>Sports Behavioral Sciences</li> </ul>
Graduate School of Law	Department of the Combined Graduate Program in Law and Political Science	<ul style="list-style-type: none"> <li>Core Law and Political Science</li> <li>Contemporary Legal Systems</li> <li>International Comparative Law and Political Science</li> <li>Asian Law and Political Science</li> </ul>
	JD Program for Legal Practice (Nagoya University Law School)	<ul style="list-style-type: none"> <li>Core Law</li> <li>Applied Contemporary Law</li> </ul>
Graduate School of Economics	Department of Socio-Economic Systems	<ul style="list-style-type: none"> <li>Analysis on Markets and Institutions</li> <li>Socio-Economic Analysis</li> <li>Analysis on the System of Policy Making</li> <li>Socio-Environmental System</li> </ul>
	Department of Industrial Management Systems	<ul style="list-style-type: none"> <li>Corporate System</li> <li>Management Innovation</li> <li>Creation of Information</li> </ul>
Graduate School of Informatics	Department of Mathematical Informatics	<ul style="list-style-type: none"> <li>Theoretical Informatics and Mathematics Unit</li> <li>Mathematical Modeling and Informatics Unit</li> </ul>
	Department of Complex Systems Science	<ul style="list-style-type: none"> <li>Many-Body Systems Science Unit</li> <li>Life-Science Informatics Unit</li> <li>Materials Informatics Unit</li> <li>Emergent Systems Unit</li> <li>Complex Systems Computation Unit</li> <li>Information Visualization Unit</li> </ul>
	Department of Social Informatics	<ul style="list-style-type: none"> <li>Philosophy of Information Unit</li> <li>Information Society Design Unit</li> <li>Global Media and Communication Unit</li> </ul>
	Department of Cognitive and Psychological Sciences	<ul style="list-style-type: none"> <li>Cognitive Science Unit</li> <li>Psychology Unit</li> </ul>
	Department of Computing and Software Systems	<ul style="list-style-type: none"> <li>Theory of Computation Unit</li> <li>Information System Platform Unit</li> <li>Software Science and Technology Unit</li> <li>Information Network Systems Unit</li> </ul>
	Department of Intelligent Systems	<ul style="list-style-type: none"> <li>Media informatics Unit</li> <li>System informatics Unit</li> <li>Field informatics Unit</li> </ul>
	Graduate School of Science	Division of Particle and Astrophysical Sciences
Division of Material Science		<ul style="list-style-type: none"> <li>Interdisciplinary Chemical Sciences</li> <li>Molecular Biophysics</li> <li>Inorganic and Analytical Chemistry</li> <li>Organic Chemistry and Biochemistry</li> <li>Physical Chemistry</li> <li>Biophysics</li> <li>Fundamental Condensed Matter Physics</li> <li>Solid State Physics</li> <li>Applied Condensed Matter Physics</li> <li>Materials Science</li> </ul>
Division of Biological Science		<ul style="list-style-type: none"> <li>Biomolecular Architecture</li> <li>Molecular Genetics</li> <li>Molecular Information and Cellular Regulation</li> <li>Developmental Biology</li> <li>Genetic Mechanism</li> <li>Supramolecular Biology</li> <li>Cell Regulation</li> <li>Biological Systems</li> <li>Environmental Biology</li> <li>Gene Analysis</li> <li>Genomics and Clock Bio-nanomachine</li> <li>Reproduction and Genetics</li> </ul>



Graduate Schools	Departments	Courses / Fields	
Graduate School of Medicine	Doctor of Medical Science	Program in Integrated Medicine	<ul style="list-style-type: none"> <li>Biological Chemistry</li> <li>Microbiology and Immunology</li> <li>Advanced Medical Science</li> <li>Laboratory Animal Science</li> <li>Aging Research</li> <li>AIDS Research</li> <li>Cell Science</li> <li>Neuroscience</li> <li>Oncology</li> <li>Higher Nervous Control</li> <li>Regulation of Organ Function</li> <li>Molecular and Cellular Adaptation</li> <li>Neurochemistry</li> <li>Anatomy and Cell Biology</li> <li>Pathology</li> <li>Development</li> <li>Cancer Genetics</li> <li>Social Life Science</li> <li>Health Promotion Medicine</li> <li>Epidemiology</li> </ul>
		Division of Clinical Medicine	<ul style="list-style-type: none"> <li>Internal Medicine</li> <li>High-Technology Application of Medicine</li> <li>Clinical Neurosciences</li> <li>Head and Neck and Sensory Organ Medicine</li> <li>Surgery</li> <li>Musculoskeletal and Cutaneous Medicine</li> <li>Biomedical Regulation</li> <li>Clinical Management Medicine</li> <li>Medicine in Growth and Aging</li> <li>Maternal and Perinatal Care</li> <li>Psychiatry for Parents and Children</li> <li>Comprehensive Ambulatory Medicine</li> </ul>
		Division of Clinical Pharmacology	<ul style="list-style-type: none"> <li>Molecule Pharmacology</li> <li>Clinical Pharmacology</li> <li>Pharmaceutical R&amp;D</li> <li>Pharmaceutical Management</li> </ul>
	Master's Course	Program in Medical Science	
		Program in Medical Science, Healthcare Administration Course	※ YLP-not open for general admission
	Program in Nursing		<ul style="list-style-type: none"> <li>Fundamentals and Clinical Nursing</li> <li>Nursing for Developmental Health</li> </ul>
	Program in Radiological and Medical Laboratory Sciences		<ul style="list-style-type: none"> <li>Radiological Sciences</li> <li>Pathophysiological Laboratory Sciences</li> <li>Brain and Mind Sciences</li> </ul>
Program in Physical and Occupational Therapy		<ul style="list-style-type: none"> <li>Physical Therapy</li> <li>Occupational Therapy</li> </ul>	

Graduate School of Engineering	Courses / Fields
Molecular Macromolecular Chemistry	
Materials Chemistry	
Biomolecular Engineering	
Applied Physics	
Materials Physics	
Materials Design Innovation Engineering	
Materials Process Engineering	
Chemical Systems Engineering	
Electrical Engineering	
Electronics	
Information and Communication Engineering	
Mechanical Systems Engineering	
Micro-Nano Mechanical Science and Engineering	
Aerospace Engineering	
Energy Engineering	
Applied Energy	
Civil and Environmental Engineering	

Graduate School of Bioagricultural Sciences	Departments	Courses / Fields
Graduate School of Bioagricultural Sciences	Department of Biosphere Resources Science	<ul style="list-style-type: none"> <li>Division of Resources Cycling System</li> <li>Division of Bioresource Production and Agroecology</li> <li>Division of Regional Resources Management</li> <li>Division of Biological Material Sciences</li> <li>Division of Ecosystem Conservation</li> </ul>
	Department of Biological Mechanisms and Functions	<ul style="list-style-type: none"> <li>Division of Biodynamics</li> <li>Division of Molecular and Cellular Biology</li> <li>Division of Biofunctions Development</li> <li>Division of Bioresource Functions</li> </ul>
	Department of Applied Molecular Biosciences	<ul style="list-style-type: none"> <li>Division of Biomodeling</li> <li>Division of Biofunctional Chemistry</li> <li>Division of Applied Biochemistry</li> <li>Division of Applied Genetics and Physiology</li> </ul>
	Department of Bioengineering Sciences	<ul style="list-style-type: none"> <li>Division of Biotechnology</li> <li>Division of Socioeconomic Science of Bioagriculture</li> <li>Division of Plant and Animal Production</li> <li>Division of Plant Genomics</li> <li>Division of Molecular Cell Function</li> <li>Division of International Cooperation in Agricultural Sciences</li> </ul>

Graduate School of International Development	Departments	Courses / Fields
Graduate School of International Development	Department of International Development	<ul style="list-style-type: none"> <li>International Development</li> <li>Development Policy</li> <li>Managerial Economics of Development</li> <li>Education and Human Development</li> </ul>
	Department of International Cooperation Studies	<ul style="list-style-type: none"> <li>International Cooperation</li> <li>Comparative Study of Legal and Political Systems</li> <li>International Cultural Cooperation</li> </ul>

Graduate School of Mathematics	Departments	Courses / Fields
Graduate School of Mathematics	Division of Mathematics	<ul style="list-style-type: none"> <li>Fundamental Mathematics</li> <li>Natural Mathematics</li> <li>Social Mathematics</li> <li>Computational Mathematics</li> <li>Advanced Topology</li> </ul>

Graduate Schools	Departments	Courses / Fields
Graduate School of Environmental Studies	Department of Earth and Environmental Sciences	<ul style="list-style-type: none"> <li>Global Environmental Variation</li> <li>Earth Environmental Systems</li> <li>Climate Science</li> <li>Global Geochemistry</li> <li>Geology and Geobiology</li> <li>Geochemistry and Cosmochemistry</li> <li>Earth and Planetary Physics</li> <li>Earth and Planetary Dynamics</li> <li>Chronology and Natural History</li> <li>Global Water Cycle</li> </ul>
	Department of Environmental Engineering and Architecture	<ul style="list-style-type: none"> <li>Sustainable Urban Development</li> <li>Environmental and Safety Management</li> <li>Functional Materials and Environment</li> <li>Material-Systems Science in Environment</li> <li>Environmental Systems and Planning</li> <li>Land, Infrastructure and Transportation Management</li> <li>Architectural and Environmental Design</li> <li>Building Structure and Construction Systems</li> </ul>
	Department of Social and Human Environment	<ul style="list-style-type: none"> <li>Environmental Policies</li> <li>Economic Environment</li> <li>Law and Politics</li> <li>Sociology</li> <li>Psychology</li> <li>Geography</li> </ul>
Graduate School of Pharmaceutical Sciences	Department of Basic Medicinal Sciences	<ul style="list-style-type: none"> <li>Organic Chemistry</li> <li>Bioscience</li> <li>Structural Biology</li> </ul>

\*English names for the above departments, courses and fields are tentative.



### Global 30 International Programs (Graduate)

Programs	Affiliated Schools	Degree	
		Master's	Doctoral
Automotive Engineering Graduate Program	• Graduate School of Engineering	●	
Civil and Environmental Engineering Graduate Program	• Graduate School of Engineering	●	●
Physics and Mathematics Graduate Program	• Graduate School of Science • Graduate School of Mathematics	●	●
Chemistry Graduate Program	• Graduate School of Science • Graduate School of Engineering	●	●
Biological and Bioagricultural Sciences Graduate Program	• Graduate School of Science • Graduate School of Bioagricultural Sciences	●	●
Biological and Bioagricultural Sciences Graduate Program	• Graduate School of Medicine	●	
Medical Science Graduate Program	• Graduate School of Medicine		●
Graduate Program in Economics and Business Administration	• Graduate School of Economics	●	
Graduate Program in Linguistics and Cultural Studies	• Graduate School of Humanities	●	
Japan-in-Asia Cultural Studies Graduate Program	• Graduate School of Humanities	●	

### Other International Programs (Graduate)

Programs	Affiliated Schools	Degree	
		Master's	Doctoral
International Development and Cooperation Course	• Graduate School of International Development	●	●
Department of the Combined Graduate Program in Law and Political Science LL. M. (Comparative Law) Program and LL.D.(Comparative Law)	• Graduate School of Law	●	●
Young Leaders' Program (YLP)	• Graduate School of Medicine	●	
Nagoya University Global Environmental Leaders Program (NUGELP)	• Graduate School of Environmental Studies • Graduate School of Engineering	●	●
Forefront Studies Program	• Graduate School of Environmental Studies • Graduate School of Engineering	●	●

# Staff

As of May 1, 2016

Members of the Board of Trustees			
President		1	
Trustees		7	
Auditors		2	
<b>Total</b>		<b>10</b>	
Staff (Full-time)			
Faculty	Professors	652	(63)*1
	Associate Professors	498	(112)
	Lecturers	159	(109)
	Assistant Professors	392	(336)
	Research Associates	3	
	Researchers	0	(174)
Specialist		3	(1)
University Research Administrator		0	(36)
School Teachers at Affiliated Schools		39	
Administrative / Technical Staff*2		2,111	(180)
<b>Total</b>		<b>3,857</b>	<b>(1,011)</b>



\*1 Data in parenthesis show the number of staff under limited-time contracts.  
\*2 Data include medical staff of the University Hospital.

# Student Enrollment

As of May 1, 2016

Name of Schools / Graduate Schools	Undergraduate Courses		Graduate Courses		Total
	Degree seeking	Non-degree seeking	Degree seeking	Non-degree seeking	
Letters	601	50	260	9	920
Education	315	26	242	19	602
Law	684	27	257	71	1,039
Economics	940	20	126	8	1,094
Informatics and Sciences	371	8	-	-	379
Science	1,213	23	575	8	1,819
Medicine	1,556	49	1,002	29	2,636
Engineering	3,416	45	1,627	26	5,114
Agricultural Sciences	748	4	419	5	1,176
International Development	-	-	282	17	299
Mathematics	-	-	162	6	168
Languages and Cultures	-	-	199	35	234
Environmental Studies	-	-	419	13	432
Information Science	-	-	352	14	366
Pharmaceutical Sciences	-	-	85	1	86
Human Informatics	-	-	1	-	1
International Language Center	-	42	-	-	42
Research Institute of Environmental Medicine	-	1	-	-	1
Institute for Space-Earth Environmental Research	-	3	-	-	3
Research Center of Health, Physical Fitness and Sports	-	2	-	-	2
<b>Total</b>	<b>9,844</b>	<b>300</b>	<b>6,008</b>	<b>261</b>	<b>16,413</b>



# Degrees Conferred

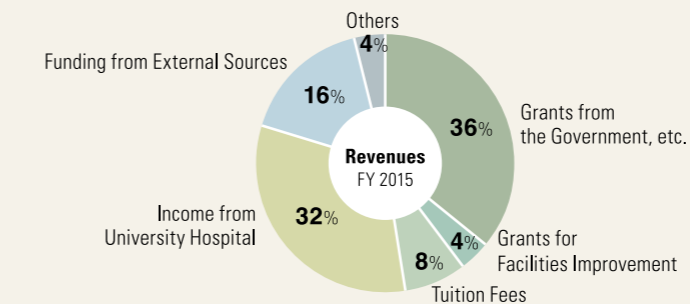
FY2015

Name of Schools / Graduate Schools	Bachelor's Degree	Master's Degree	Doctor's Degree	Professional Degree
Letters	125	46	17	-
Education	86	48	10	-
Law	178	41	4	47
Economics	221	25	3	-
Informatics and Sciences	75	-	-	-
Science	286	184	49	-
Medicine	324	90	180	-
Engineering	808	622	75	-
Agricultural Sciences	182	153	25	-
International Development	-	68	16	-
Mathematics	-	43	9	-
Languages and Cultures	-	48	16	-
Environmental Studies	-	126	24	-
Information Science	-	126	12	-
Pharmaceutical Sciences	-	28	-	-
Human Informatics	-	-	-	-
<b>Total</b>	<b>2,285</b>	<b>1,648</b>	<b>440</b>	<b>47</b>



# Financial Outline

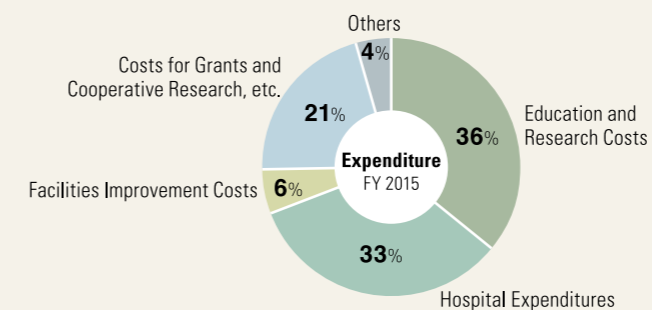
\*The following information was calculated in accordance with the National University Corporation Accounting Standards.



## Revenues

FY 2015

Item	Amount (million yen)
Grants from the Government, etc.	40,422
Grants for Facilities Improvement	4,320
Tuition Fees	8,843
Income from University Hospital	36,067
Funding from External Sources	18,484
Others	4,097
<b>Total</b>	<b>112,233</b>



## Expenditure

FY 2015

Item	Amount (million yen)
Education and Research Costs	39,001
Hospital Expenditures	35,715
Facilities Improvement Costs	6,227
Costs for Grants and Cooperative Research, etc.	22,532
Others	4,548
<b>Total</b>	<b>108,023</b>

\*Each item includes Labor Costs, the total of which was 49,588 million yen.

# External Funding for Research and Education

FY 2015

Item	Number of Cases	Amount(thousand yen)
Grants-in-Aid for Scientific Research	2,961	7,654,928
Other Governmental Grants	121	7,086,982
Donations and Commissioned Research	4,382	14,490,779

\*Data based on the book closed and including numbers / amounts received as research partakers.





## Highlights of Research and Education Programs

Top Global University Project	
Adoption of Year	Program Title
2014	Asian Hub University contributing to a sustainable society in the 21st century

World Premier International Research Center Initiative (WPI)		
Adoption of Year	Center name	Center Director
2012	Institute of Transformative Bio-Molecules	Graduate School of Science Prof. ITAMI Kenichiro

Program for Promoting the Enhancement of Research Universities		COI STREAM	
Adoption of Year	Program Title	Adoption of Year	Program Title
2015	Program for Promoting the Enhancement of Research Universities	2015	A Diverse and Individualized Social Innovation Hub -The "Mobility Society" for Elderly: Lead to an Active and Joyful Lifestyle-

Program for Leading Graduate Schools		
Adoption of Year	Program Title	School
2011	Integrative Graduate Education and Research Program in Green Natural Sciences	<ul style="list-style-type: none"> <li>Graduate School of Science</li> <li>Graduate School of Engineering</li> <li>Graduate School of Bioagricultural Sciences</li> </ul>
2011	The Program for Cross-Border Legal Institution Design	<ul style="list-style-type: none"> <li>Graduate School of Law</li> </ul>
2012	PhD Professional: Gateway to Success in Frontier Asia	<ul style="list-style-type: none"> <li>All Graduate Schools (except for Graduate School of Pharmaceutical Sciences)</li> </ul>
2012	Leadership Development Program for Space Exploration and Research	<ul style="list-style-type: none"> <li>Graduate School of Science</li> <li>Graduate School of Engineering</li> </ul>
2013	Graduate Program for Real-World Data Circulation Leaders	<ul style="list-style-type: none"> <li>Graduate School of Information Science</li> <li>Graduate School of Engineering</li> <li>Graduate School of Medicine</li> <li>Graduate School of Economics</li> </ul>
2013	Women Leaders Program to Promote Well-being in Asia	<ul style="list-style-type: none"> <li>Graduate School of International Development</li> <li>Graduate School of Education and Human Development</li> <li>Graduate School of Bioagricultural Sciences</li> <li>Graduate School of Medicine</li> </ul>

Re-Inventing Japan Project			
Adoption of Year	Type	Program Title	School
2016	Support for the formation of Collaborative Programs with Universities in Asia	Training Human Resources for the Development of an Epistemic Community in Law and Political Science to Promote the Formation of "jus commune" in East Asia	Graduate School of Law • School of Law
2016	Support for the formation of Collaborative Programs with Universities in Asia	Fostering Human Resources for Global Soft-Infrastructure connecting between ASEAN and Japan	Graduate School of Economics • School of Economics, Graduate School of Law • School of Law, Center for Asian Legal Exchange, Graduate School of Bioagricultural Sciences and School of Agricultural Sciences, International Cooperation Center for Agricultural Education, Graduate School of International Development, Graduate School of Environmental Studies, Graduate School of Mathematics

## Housing for International Researchers and Students



International Ohmeikan House



International Residence HIGASHIYAMA

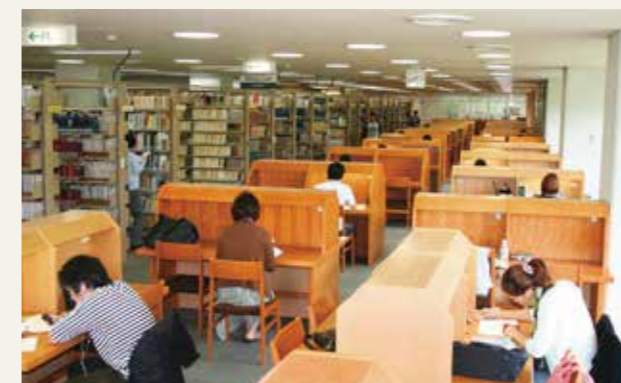


Housing in Noyori Conference Hall

For International Researchers		
Name of the Housing	Facilities	Address
International Residence HIGASHIYAMA (on campus)	15 rooms for single persons / couples (34m <sup>2</sup> ) 2 rooms for families (51.84m <sup>2</sup> )	Furo-cho, Chikusa-ku, Nagoya, 464-8601
Researchers Village HIGASHIYAMA (on campus)	2 rooms for families (76.45m <sup>2</sup> /78.33m <sup>2</sup> ) 4 rooms for families (67.5m <sup>2</sup> )	6-1-1 Higashiyamamotomachi, Chikusa-ku, Nagoya, 464-0804
Researchers Village DAIKO (on campus)	14 rooms for single persons (28m <sup>2</sup> )	1-1-20 Daiko Minami, Higashi-ku, Nagoya, 461-0047
Researchers Village YAKUMO	9 rooms for couples / families (53m <sup>2</sup> )	28 Yakumo-cho, Showa-ku, Nagoya, 466-0823
Housing in Noyori Conference Hall (on campus)	3 rooms for single persons (50.98–54.15m <sup>2</sup> ) 5 rooms for couples (81.01–91.10m <sup>2</sup> ) 2 rooms for families (97.17m <sup>2</sup> /107.35m <sup>2</sup> )	1-1 Niza-cho, Chikusa-ku, Nagoya, 464-0813
Idaka-cho Residence	26 rooms for single persons (21.06–21.99m <sup>2</sup> )	2-38 Kamenoi, Meito-ku, Nagoya, 465-0094

\*We have some private housings outside campus.

For International Students		
Name of the Housing	Facilities	Address
Foreign Students House	49 rooms for single persons (12.5m <sup>2</sup> ) 5 rooms for couples (35m <sup>2</sup> ) 2 rooms for families (50m <sup>2</sup> )	2-23 Tosei-cho, Showa-ku, Nagoya, 466-0026
International Residence HIGASHIYAMA (on campus)	95 rooms for single persons (16m <sup>2</sup> ) 25 rooms for couples (34m <sup>2</sup> )	Furo-cho, Chikusa-ku, Nagoya, 464-8601
International Residence YAMATE	104 rooms for single persons (15m <sup>2</sup> ) 112 rooms for single persons (7m <sup>2</sup> )	165 Takamine-cho, Showa-ku, Nagoya, 466-0811
International Ohmeikan House	292 rooms for single persons *Japanese students are also housed in this dormitory.	165 Takamine-cho, Showa-ku, Nagoya, 466-0811
Ishida Memorial International Residence MYOKEN	93 rooms for single persons (15.1m <sup>2</sup> )	40 Myoken-cho, Showa-ku, Nagoya, 466-0814



## Library Holdings

The University Library is composed of the Central Library, the Medical Library, and departmental libraries. As of April 1st, 2016, the Library holds 3,296,394 volumes of books in total, including 1,534,161 foreign books, as well as a large amount of electronic resources and audio visual collections.

In order to support students' learning experiences, the library established a space called "learning commons" where students can learn in groups through discussion and receive personal guidance for using electronic resources and software.

# Our Partner Institutions

As of Dec. 1, 2016

## Academic Exchange Agreements

- = Inter-University Agreement
- = Inter-School Agreement

### Asia

#### BANGLADESH

- Bangladesh Agricultural University
- Bangladesh University of Engineering & Technology, Department of Physics
- University of Dhaka, Faculty of Social Sciences
- SAARC Meteorological Research Centre

#### BHUTAN

- The Centre for Bhutan Studies

#### CAMBODIA

- Royal University of Phnom Penh
- Royal University of Agriculture
- Royal University of Law and Economics

#### CHINA

- Nanjing University
- Jilin University
- Huazhong University of Science and Technology
- Tsinghua University
- Fudan University
- Xi'an Jiaotong University
- Zhejiang University
- Shanghai Jiao Tong University
- Tongji University
- Northeastern University
- Peking University
- Harbin Institute of Technology
- University of Science and Technology of China
- Chinese Academy of Sciences, the Shanghai Institute of Organic Chemistry
- The Chinese University of Hong Kong
- The University of Hong Kong
- Dalian University of Technology
- Central South University
- Beijing University of Technology
- Chinese Academy of Sciences, Purple Mountain Observatory
- Chinese Academy of Sciences, National Astronomical Observatories
- China University of Political Science and Law
- East China Normal University, Faculty of Education Sciences
- Chinese Academy of Social Sciences, Institute of Literature and Institute of Literature of National Minorities
- Peking University, School of International Studies
- East China University of Political Science and Law
- Chinese Academy of Sciences, Institute of High Energy Physics
- Beijing International Studies University
- Nanjing University of Aeronautics and Astronautics
- Jiangsu Provincial Academy of Social Sciences (JSASS)
- Chinese Academy of Sciences, Institute of Process Engineering
- Polar Research Institute of China
- Southwest Jiaotong University, School of Economics and Management

- Beijing Institute of Technology, School of Management and Economics
- Chinese Academy of Sciences, Research Center for Eco-Environmental Sciences
- Tianjin University, School of Management and School of Public Administration
- Chinese Academy of Social Sciences, Institute of Population and Labor Economics
- University of International Business and Economics, School of International Trade & Economics
- Chinese Academy of Sciences, Xinjiang Institute of Ecology and Geography
- Chinese Academy of Sciences, Shanghai Institute of Ceramics
- China Meteorological Administration, Institute of Desert Meteorology
- Hainan University, Law School
- The Hong Kong University of Science and Technology, School of Engineering
- Renmin University of China, School of Law
- Shenyang University of Technology
- Sun Yat-sen University, Lingnan College
- Ministry of Health, P.R.China, China-Japan Friendship Hospital
- Beijing Normal University, Academy of Disaster Reduction and Emergency Management, State Key Laboratory of Earth Surface Processes and Resource Ecology
- Xiamen University, School of Law
- Chinese Academy of Sciences, Institute of Theoretical Physics
- Chinese Academy of Sciences, Institute of Geographic Sciences and Natural Resources Research
- Nanjing Normal University, School of Energy & Mechanical Engineering
- Donghua University, College of Foreign Languages
- Shanghai International Studies University, School of Japanese Studies and School of Chinese Studies and Exchange
- Beijing Normal University, Faculty of Education
- Institute of Science and Technology for Development of Shandong (ISTD)
- Xi'an International Studies University, School of Japanese Culture and Economy
- Tianjin University, School of Architecture
- Renmin University of China, School of Foreign Languages

#### INDIA

- University of Pune
- Indian Institute of Science, Bangalore
- Tata Institute of Fundamental Research
- Tata Institute of Fundamental Research, Natural Sciences Faculty
- Indian Institute of Technology Madras
- Indian Institute of Technology Delhi

#### INDONESIA

- Gadjah Mada University
- The State University of Surabaya
- Institute of Technology Bandung
- Indonesian National Institute of Aeronautics and Space
- Padjadjaran University, Faculty of Letters
- Syiah Kuala University, Faculty of Basic Science
- Diponegoro University, Pusat Studi Asia

- Agency for the Assessment and Application of Technology (BPPT), Center for the Assessment and Application of Environmental Technology
- University of Indonesia, Faculty of Engineering
- University of Indonesia, Faculty of Computer Science
- Sepuluh Nopember Institute of Technology
- Sriwijaya University, Faculty of Agriculture
- Universitas Halu Oleo

#### REPUBLIC OF KOREA

- Mokpo National University
- Gyeongsang National University
- Ewha Womans University
- Hanyang University
- Korea University
- Seoul National University
- Kyung Hee University
- Yonsei University
- Sungkyunkwan University
- Pohang University of Science and Technology
- Korea Advanced Institute of Science and Technology (KAIST)
- Korea Maritime and Ocean University
- Korean Research Institute of Standards and Science, Astronomy Observatory
- Chungnam National University, College of Economics and Business Administration
- Korea University, College of Education
- Korea Institute for Advanced Study, School of Mathematics
- Seoul National University, College of Law
- Kyungnam University, Industry Academic Cooperation Foundation
- Korea Legislation Research Institute
- Pukyong National University, College of Fisheries Sciences
- Pusan National University, College of Engineering
- Hankuk University of Foreign Studies, Graduate School and Graduate School of International Area Studies
- Chonnam National University, College of Business Administration
- University of Seoul, College of Public Affairs and Economics
- Chonbuk National University, Institute for North-East Asian Law
- Korea Institute of Geoscience and Mineral Resources, Geologic Environment Research Division
- Kyungpook National University, Faculty of Engineering
- Institute of Sunchang Fermented Soybean Products
- Korea Institute of Geoscience and Mineral Resources, Geologic Environment Research Division
- Seoul National University Hospital
- Korean Space Weather Center
- ASAN Medical Center
- Dong-A University, College of Natural Resources and Life Science
- Korea Aerospace University, College of Engineering, Department of Materials Science, Center of Surface Technology and Applications
- Pusan National University, Professional Graduate School of Law
- Korea Institute of Ocean Science and Technology, Korea Ocean Satellite Center
- Chungnam National University, College of Agriculture and Life Sciences
- Seoul National University Asia-Pacific Law Institute
- Chonnam National University, Automobile Research Center, School of Mechanical Engineering

#### LAOS

- National University of Laos
- National Agriculture and Forestry Research Institute
- Champasack University

#### MALAYSIA

- MARA University of Technology, Faculty of Mechanical Engineering
- Universiti Putra Malaysia, Faculty of Science

#### MONGOLIA

- National University of Mongolia
- Mongolian University of Science and Technology
- Ministry of Health and Sports, Mongolia
- Mongolian National University of Medical Sciences
- Mineral Resources and Petroleum Authority of Mongolia, Geological Information Center
- National Legal Center of Mongolia
- Mongolian University of Science and Technology, School of Geology and Petroleum Engineering
- Mongolian Academy of Sciences, Institute of Geography
- Mongolian Academy of Sciences, Institute of Philosophy, Sociology and Law
- Institute of Meteorology, Hydrology and Environment, Mongolia
- Mongolian National University of Education

#### MYANMAR

- University of Yangon
- The University of Medicine 1, Yangon

#### NEPAL

- Kathmandu University, School of Science

#### PHILIPPINES

- University of the Philippines, Los Baños
- University of the Philippines
- University of the Philippines, Diliman
- University of the Philippines, Manila, UP College of Nursing
- Gokongwei College of Engineering, De La Salle University

#### SINGAPORE

- National University of Singapore, Yong Loo Lin School of Medicine, Alice Lee Centre for Nursing Studies
- National University of Singapore, NUS Business School
- National University of Singapore, Office of Safety, Health & Environment
- National University of Singapore, Center for Quantum Technologies

#### SRI LANKA

- University of Sri Jayewardenepura, Faculty of Humanities and Social Sciences

#### THAILAND

- Kasetsart University
- Chulalongkorn University
- Chulabhorn Research Institute/Chulabhorn Graduate Institute
- Rajamangala University of Technology Thanyaburi
- Bangkok Dusit Medical Services Public Company Limited

- King Mongkut's University of Technology North Bangkok, Science and Technology Research Institute
- Thammasat University, Faculty of Economics
- Mahidol University, ASEAN Institute for Health Development
- Chiang Mai University, Faculty of Economics
- Mahidol University, Faculty of Medicine Ramathibodi Hospital

#### VIETNAM

- Hanoi University of Science and Technology
- Vietnam National University, Hanoi
- The Ministry of Justice of the Socialist Republic of Viet Nam
- Vietnam Institute of State and Law
- Hanoi Law University
- Ho Chi Minh City University of Law
- Vietnamese Academy of Science and Technology, Ho Chi Minh City Institute of Resources Geography
- Vietnam National University- Ho Chi Minh City, University of Science, Faculty of Environmental Science
- Foreign Trade University
- Hue University of Medicine and Pharmacy
- Vietnam Academy of Science and Technology, Institute of Mathematics
- University Medical Center, Ho Chi Minh City

#### TAIWAN

- National Taiwan University
- National Chengchi University
- National Tsing Hua University
- National Chung Cheng University
- National Chengchi University, College of Law
- National Taiwan Normal University, College of Education
- Soochow University, School of Law
- Soochow University, School of Foreign Languages and Cultures
- National Taiwan University, Department of Atmospheric Sciences
- Taiwan Ocean Research Institute
- National Chiao Tung University, College of Electrical and Computer Engineering
- National Chung Cheng University, Center for International Affairs and Exchange

### Pacific

#### AUSTRALIA

- University of Sydney
- Monash University
- Flinders University
- University of South Australia
- The University of Adelaide
- The Australian National University
- The University of Western Australia
- The University of Melbourne, Asian Law Centre
- Commonwealth Scientific and Industrial Research Organization, Division of Ecosystem Sciences (CSIRO)
- The University of Adelaide, Faculty of Health Sciences

#### NEW ZEALAND

- National Institute of Water and Atmospheric Research
- University of Auckland, Center for Geophysical Research
- University of Canterbury, Faculty of Science

### Europe

#### ARMENIA

- Yerevan Physics Institute

#### AUSTRIA

- University of Innsbruck
- Johannes Kepler University Linz, Faculty of Law
- The Medical University of Vienna
- FH JOANNEUM Gesellschaft mbH University of Applied Sciences
- Universität Klagenfurt, Institute of Social Ecology, Faculty for Interdisciplinary Studies

#### BELGIUM

- KU Leuven

#### BULGARIA

- Sofia University, Department of Astronomy
- Bulgarian Academy of Sciences, Institute of Electronics and Space Research Institute, Space Astronomy Division
- Bulgarian Academy of Sciences, Institute of Mathematics

#### DENMARK

- University of Copenhagen
- Aarhus University

#### FINLAND

- Finnish Meteorological Institute, Department of Geophysics

#### FRANCE

- Ecole Nationale des Ponts et Chaussées (ENPC)
- Université Paris Diderot-Paris 7
- Université Jean Moulin-Lyon 3
- Université de Grenoble\*
- Université Paris-Est
- Université de Strasbourg
- École Normale Supérieure de Lyon
- Fondation Maison des Sciences de l'Homme
- Aix-Marseille Université
- Université Stendhal (Université de Grenoble 3)
- Université de Paris-Sorbonne, Paris 4
- Université Panthéon Assas, Paris 2
- École Nationale Supérieure d'Architecture Paris Val-de-Seine
- Université de Technologie de Belfort-Montbéliard

\* Université de Grenoble represents Université Joseph Fourier (Grenoble 1), Université Pierre Mendès France (Grenoble 2), Université Stendhal (Grenoble 3), Institut d'Etudes Politiques de Grenoble, Institut Polytechnique de Grenoble, Université Savoie Mont Blanc.

#### GERMANY

- Technische Universität Braunschweig
- Technische Universität München
- Technische Universität Chemnitz
- University of Freiburg
- RWTH Aachen
- University of Freiburg, Faculty of Economics and Behavioral Sciences
- University of Cologne, I Physical Institute
- Johannes Gutenberg University Mainz, Faculty of Chemistry, Pharmaceutical Sciences and Geoscience



- German Aerospace Center, Institute of Aerospace Medicine
- University of Ulm, Faculty of Mathematics and Economics
- University of Freiburg, Faculty of Medicine
- University of Regensburg, Faculty of Law
- University of Münster, Faculty of Chemistry and Pharmacy
- Ruhr-Universität Bochum, Faculty of Physics and Astronomy and Faculty of Electrical Engineering and Information Technology
- Technische Universität Kaiserslautern, Faculty of Architecture, Spatial and Environmental Planning and Civil Engineering
- Freie Universität Berlin, Environmental Policy Research Centre
- The Research Center for Eastern and South Eastern Europe in Regensburg, Institute for East European Law
- Technische Universität Darmstadt, Department of Civil Engineering and Geodesy
- Ruhr Universität Bochum, Faculty of Mathematics
- University of Duisburg-Essen, Institute of East Asian Studies
- Fraunhofer Institute for Chemical Technology ICT, Fraunhofer-Gesellschaft
- CFK Valley Stade e.V.
- EBS Law School
- Johannes Gutenberg University Mainz, Faculty of Physics, Mathematics and Computer Science
- Leibniz Institute of Ecological Urban and Regional Development

#### HUNGARY

- Hungarian Academy of Sciences, Institute for Legal Studies

#### ICELAND

- University of Iceland

#### ITALY

- National Institute of Nuclear Physics (INFN)
- University of Catania
- University of Bologna
- Sapienza University of Rome
- University of Padova, Department of Information Engineering

#### KAZAKHSTAN

- Kazakh Humanitarian and Law University
- Legislation Research Institute, Republic of Kazakhstan

#### LATVIA

- Latvian State University

#### NORWAY

- University of Oslo
- University of Tromso, Faculty of Science

#### POLAND

- University of Warsaw
- Institute of High Pressure Physics (UNIPRESS), Polich Academy of Sciences
- Medical University of Gdańsk
- Warsaw University of Technology
- Polish Academy of Sciences, Institute of Geological Sciences, Krakow Research Centre

#### RUSSIA

- Ioffe Institute
- Rzhanov Institute of Semiconductor Physics Siberian Branch of Russian Academy of Sciences
- Institute of Theoretical and Experimental Physics
- Ministry of Health of Russia, Institute of Biomedical Problems
- Lomonosov Moscow State University, Faculty of Physics
- Moscow State Engineering and Physics Institute (Technical University-MEPH)
- Russian Academy of Sciences, Institute of Computer Aided Design

- Russian Academy of Sciences, Far Eastern Branch, Institute of Cosmophysical Research and Radiowave Propagation (IKIR)
- Russian Academy of Sciences, Siberian Branch, Institute of Solar-Terrestrial Physics (ISTP)
- M.V. Lomonosov Moscow State University, Department of Chemistry
- Russian Academy of Sciences, Siberian Branch, Yu.G. Shafer Institute of Cosmophysical Research and Aeronomy (IKFIA)

#### SPAIN

- University of Barcelona
- Institute of Space Studies of Catalonia (IEEC)

#### SWEDEN

- Uppsala University
- Royal Institute of Technology
- Swedish Institute of Space Physics
- Lund University, Faculty of Law
- SAFER - Vehicle and Traffic Safety Centre at Chalmers
- Lund University, Faculty of Medicine

#### SWITZERLAND

- University of Geneva
- University of Bern, Interdisciplinary Center for General Ecology (IKAOe)

#### U.K.

- The University of Sheffield
- The University of Warwick
- University of Bristol
- University of London, School of Oriental and African Studies (SOAS)
- The University of Leeds
- The University of Edinburgh
- University of Cambridge, St John's College
- The University of Nottingham, School of Biosciences
- University of East Anglia, Faculty of Social Sciences, School of International Development
- The University of Manchester, Faculty of Life Sciences
- University of Leicester, Department of Physics and Astronomy
- The University of Oxford, Department of Physics
- The University of Manchester, School of Environment & Development
- The University of Warwick
- The University of Edinburgh, College of Science & Engineering, School of Chemistry
- The University of Edinburgh, Higgs Centre for Theoretical Physics

#### UKRAINE

- Ukrainian Academy of Sciences, Institute of Theoretical Physics

#### UZBEKISTAN

- Tashkent State University of Law (TSUL)
- University of World Economy and Diplomacy
- Tashkent State Technical University named after Abu Raykhan Beruniy
- The Academy of Public Administration under the President of the Republic of Uzbekistan
- Samarkand State University

#### North America

#### CANADA

- York University
- University of Toronto, the Faculty of Arts and Science
- Université de Montréal
- University of Alberta

- University of Ottawa
- University of Calgary
- Carleton University, Faculty of Science
- University of Toronto, Ontario Institute for Studies in Education (OISE)
- University of Victoria, Centre for Asia-Pacific Initiatives

#### USA

- Oberlin College
- North Carolina State University
- Harvard-Yenching Institute
- University of Cincinnati
- St. Olaf College
- Southern Illinois University, Carbondale
- University of Illinois at Urbana-Champaign
- New York University
- University of Kentucky
- University of Minnesota
- University of California, Los Angeles
- The University of North Carolina at Chapel Hill
- University of California, Davis
- University of California, Berkeley
- University of Florida
- Iowa State University
- University of Michigan, College of Engineering
- University of California, Los Angeles, Department of Education
- University of Houston, Cullen College of Engineering
- University of California, Berkeley, Department of Physics
- University of North Carolina at Chapel Hill, School of Medicine
- University of California Berkeley, College of Natural Resources
- University of Alaska Fairbanks, Geophysical Institute
- National Oceanic and Atmospheric Administration, Space Environment Laboratory
- National Oceanic and Atmospheric Administration, National Geophysical Data Center
- Massachusetts Institute of Technology, Haystack Observatory
- Harvard Medical School
- Tulane University, School of Medicine
- University of Pennsylvania, School of Medicine
- University of California, San Diego, Center for Astrophysics and Space Sciences
- Colorado School of Mines
- University of Alaska Fairbanks, Geophysical Institute
- Duke University, School of Medicine
- Johns Hopkins University, School of Medicine
- University of Wisconsin Law School
- University of Wisconsin Law School, East Asian Legal Studies Center
- University of Maryland, Department of Mechanical Engineering
- University of Washington, Genetically Engineered Materials Science and Engineering Center
- University of California, Los Angeles, California NanoSystems Institute
- Northwestern University, Materials Research Institute
- University of California, Berkeley, Center for Global Metropolitan Studies
- Michigan State University, Department of Physics and Astronomy
- Green Mountain College
- University of California, Santa Barbara, Bren School of Environmental Science and Management
- University of Michigan, College of Literature, Science, and the Arts, Department of Chemistry
- University of Michigan, College of Engineering, Macromolecular Science and Engineering Center
- University of Pittsburgh, School of Education

- Ohio State University, Center for Cosmology and AstroParticle Physics; College of Arts and Sciences, Department of Physics and Department of Astronomy
- University of Colorado Boulder, Laboratory for Atmospheric and Space Physics
- Virginia Polytechnic Institute and State University, Center for Space Science and Engineering Research
- University of Washington, College of Engineering
- Ohio State University, College of Education and Human Ecology
- The University of Akron, School of Law

#### Latin America and the Caribbean

#### ARGENTINE

- National University of Rosario, Faculty of Biochemical and Pharmaceutical Sciences
- Luis F. Leloir, Campomar Foundation, The Research Institute of Biochemistry

#### BOLIVIA

- Universidad Mayor de San Andres, La Paz, Faculty of Sciences, Chacaltaya Cosmic Ray Observatory

#### BRAZIL

- Universidade de Brasília
- Universidade de São Paulo
- National Institute for Space Research
- Fundacao Joaquim Nabuco

#### GUATEMALA

- Del Valle de Guatemala University, School of Engineering

#### MEXICO

- Universidad Nacional Autonoma de Mexico
- Universidad de Sonora

#### Middle East

#### IRAN

- University of Kurudistan, Faculty of Engineering

#### TURKEY

- Bilkent University
- Istanbul Technical University

#### Africa

#### EGYPT

- Cairo University
- Tanta University, Faculty of Engineering

#### GHANA

- University of Ghana, Faculty of Social Studies

#### KENYA

- University of Nairobi
- African Institute for Capacity Development (AICAD)

#### SOUTH AFRICA

- Stellenbosch University
- South African Astronomical Observatory
- The Human Sciences Research Council (HSRC)

#### International Organization

- Southeast Asian Regional Center for Graduate Study and Research in Agriculture (SEARCA)
- European Organization for Nuclear Research (CERN)

- United Nations Centre for Regional Development (UNCRD)
- International Institute for the Unification of Private Law

#### Multilateral

- Chulalongkorn University (Thailand); Hanoi University of Science and Technology (Vietnam) and National University of Laos (Laos)
- Tashkent State Technical University named after Abu Raykhan Beruniy (Uzbekistan); University of Tsukuba (Japan)
- The University of Adelaide, Faculty of Health Sciences (Australia); University of Freiburg, Faculty of Medicine (Germany)

## Agreements for Industry-University Collaboration

#### Europe

#### U.K.

- University of Warwick
- NCC Operations Ltd. as legal entity for the University of Bristol National Composites Centre

#### North America

#### USA

- North Carolina State University

#### Multilateral

- Mongolian University of Science and Technology (Mongolia); University of Toyama (Japan); Japan Geocommunications Co. Ltd. (Japan)
- Pôle EMC2 (France); IRT Jules Verne (France); Gifu University, Composite Materials Center (Japan); Kanazawa Institute of Technology, Innovative Composite Materials Research and Development Center (Japan)

## Agreement for International Joint Research

#### Asia

#### REPUBLIC OF KOREA

- Sungkyunkwan University, Center for Advanced Plasma Surface Technology

## Agreements for Internship

#### International Organization

- The United Nations Educational Scientific and Cultural Organization, Asia and the Pacific Regional Bureau for Education (UNESCO Bangkok)
- The International Organization for Migration (IOM)

## Memorandum of Understanding on the Establishment of the Office

#### Asia

#### THAILAND

- Chulalongkorn University, Research Services Center of Petroleum and Petrochemical College

<b>International Networks</b>
<ul style="list-style-type: none"><li>Academic Consortium 21 (AC21)</li> <li>University Mobility in Asia and the Pacific (UMAP)</li> <li>Open Education Consortium</li> <li>Japan-Canada Academic Consortium</li> <li>Japan-UK Research and Education Network for Knowledge Economy Initiatives (RENKEI)</li></ul>

## Overseas Research and Education Bases

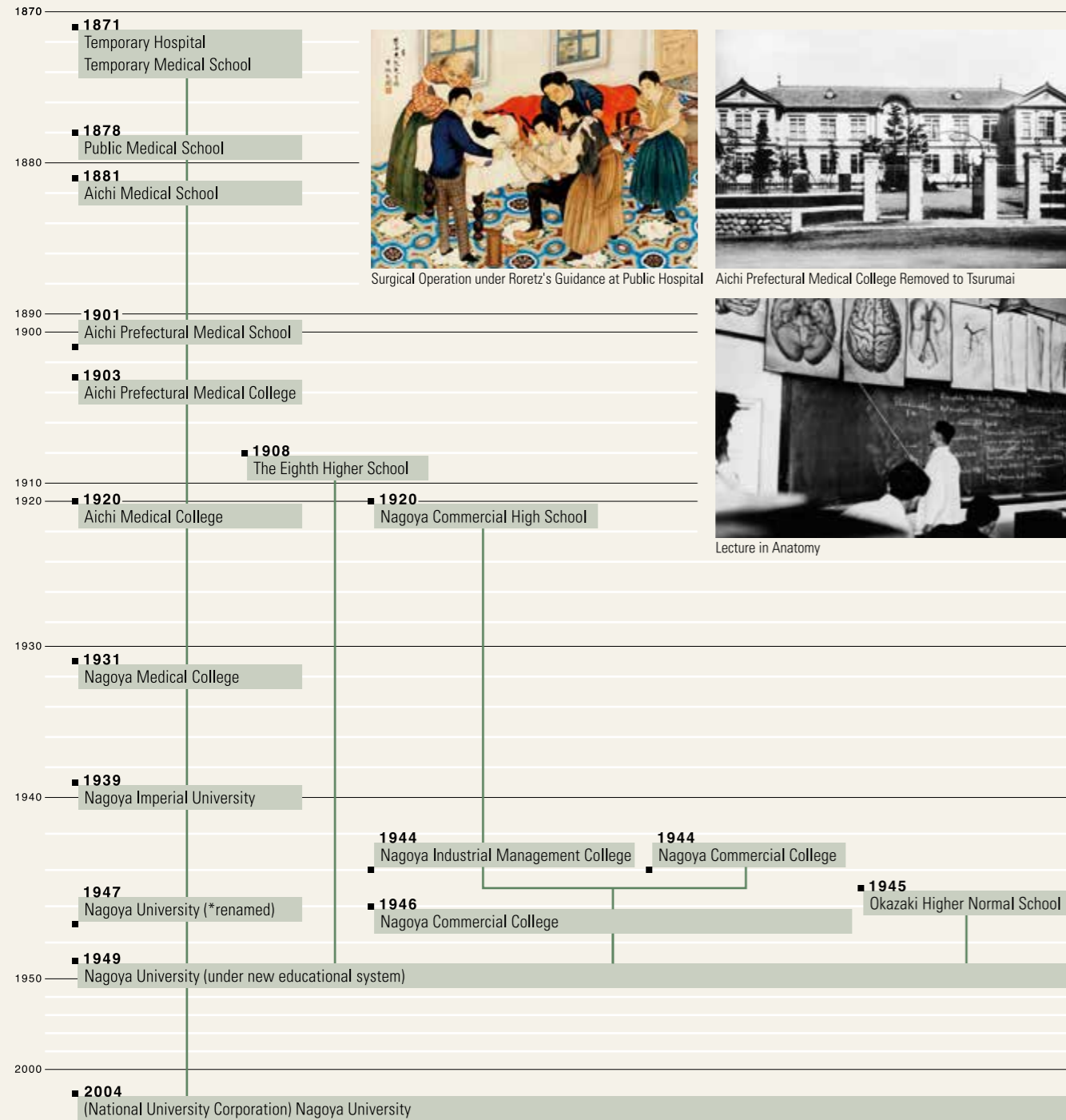
- China Center for International Exchange (Shanghai, China)
- Uzbekistan Office (Tashkent, Uzbekistan)
- European Center (Freiburg, Germany)
- Bangkok Office (Bangkok, Thailand)
- Mongolia Office (Ulaanbaatar, Mongolia)
- Vietnam Office(Hanoi, Vietnam)
- Cambodia Office(Phnom Penh, Cambodia)
- Laos Office(Vientiane,Laos)
- Philippine Office(Los Banos)
- Technology Partnership, Inc. (North Carolina, USA)
- Centers for research and education in the field of law(Tashkent, Uzbekistan • Ulaanbaatar, Mongolia • Hanoi/Ho Chi Minh City, Vietnam • Phnom Penh, Cambodia • Yangon, Myanmar • Yogyakarta, Indonesia • Vientiane, Laos)
- Field Research Center (Ulaanbaatar, Mongolia)
- Nagoya Endoscopy Training Center (Hue/Hanoi, Vietnam • Yangon, Myanmar)
- Asian Satellite Campuses (Phnom Penh, Cambodia/Ulaanbaatar, Mongolia/ Hanoi, Vietnam/Tashkent, Uzbekistan/ Vientiane,Laos/Los Banos, Philippine)
- Nagoya University/ Mongolian National University of Education Joint Support Center for Child Development(Ulaanbaatar, Mongolia)
- The Cooperative Center for Resilience Research, National University of Mongolia and Nagoya University (Ulaanbaatar, Mongolia)







# Historical Chart



Surgical Operation under Roretz's Guidance at Public Hospital



Aichi Prefectural Medical College Removed to Tsurumai



Lecture in Anatomy

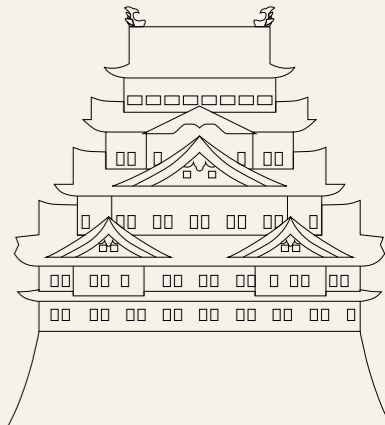
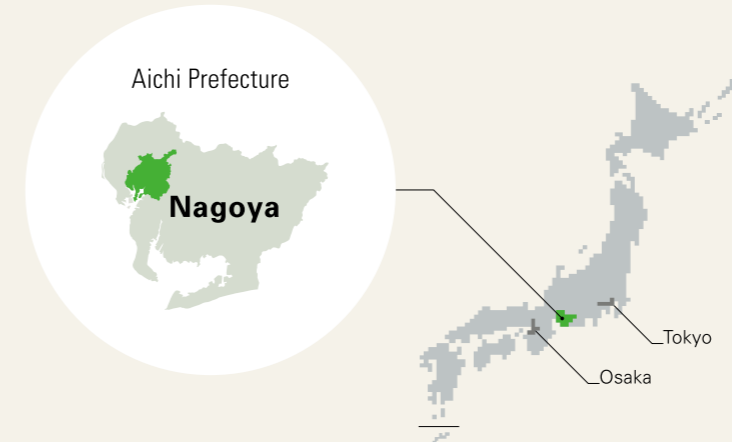


Toyoda Auditorium (around 1960)



Toyoda Auditorium (2010)

# The City of Nagoya



- ✓ Nagoya City is one of the top-ranking economies worldwide, boasting leading industries in automotive manufacturing, machinery, electronics and ceramics.
- ✓ The Chubu area of Japan is particularly renowned as the home of Oda Nobunaga, Toyotomi Hideyoshi and Tokugawa Ieyasu, three leaders who unified Japan over 400 years ago, bringing an end to the "Period of Warring States."
- ✓ Nagoya Castle, originally built by Tokugawa Ieyasu and famous for the golden dolphins found on its donjon, serves as the landmark of the region.



JR Central Towers



Nagoya Castle



Nagoya Noh Theater



Arimatsu Shibori Matsuri (festival)



Nagoya City Archives



The Golden Dolphin



Nagoya Congress Center



Nagoya Port Triton



Nagoya City Art Museum



OASIS 21